

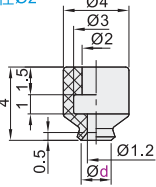
标准型 单层型真空吸盘/吸盘专用螺钉

标准型 单层型真空吸盘

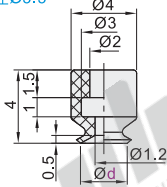
代码	吸盘材质	颜色
WEM01	丁腈橡胶	黑色
WEM02	硅胶	白色



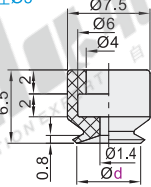
盘径Ø2



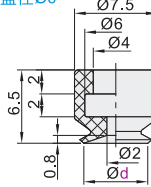
盘径Ø3.5



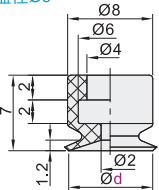
盘径Ø5



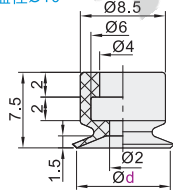
盘径Ø6



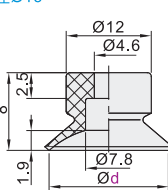
盘径Ø8



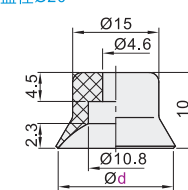
盘径Ø10



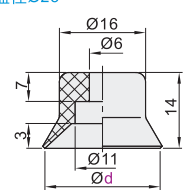
盘径Ø15



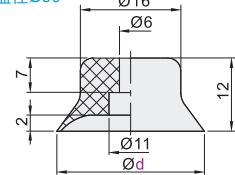
盘径Ø20



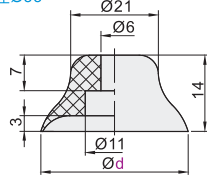
盘径Ø25



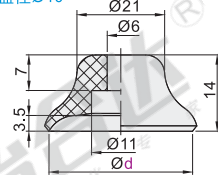
盘径Ø30



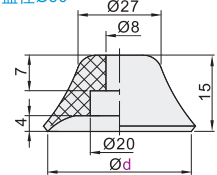
盘径Ø35



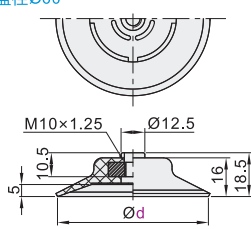
盘径Ø40



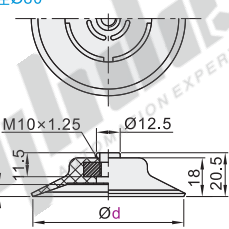
盘径Ø50



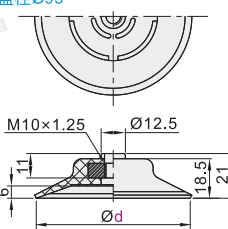
盘径Ø60



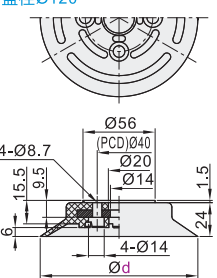
盘径Ø80



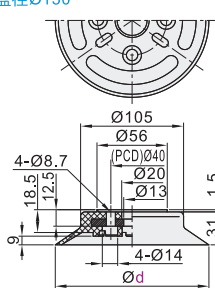
盘径Ø95



盘径Ø120



盘径Ø150



型号	
代码	盘径d
WEM01 WEM02	2
	3.5
	5
	6
	8
	10
	15
	20
	25

型号	
代码	盘径d
WEM01 WEM02	30
	35
	40
	50
	60
	80
	95
	120
	150



请按图示订货

型号	
代码	d
WEM01	Ø2
WEM02	Ø8
WEM01-d6	



未税价(元)

● 优惠价

数量	1~29	30~
价格	100%	另行报价



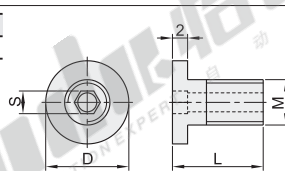
交货期
5

真空吸盘

D7

吸盘专用螺钉

代码	类型	材质	表面处理
WEM15	吸盘专用螺钉	黄铜	无电镀锌镍



视角标准：第一视角



型号		L	D	M	S	适用吸盘盘径
WEM15	规格 5	10	8	M5	2.5	Ø15
	5L	12	11			Ø20
	6			M6	3	Ø25, Ø30, Ø35, Ø40



请按图示订货

型号	
代码	规格
WEM15	Ø5L
WEM15-5	



交货期
5

适用单层型与双层型真空吸盘!