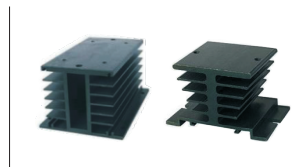
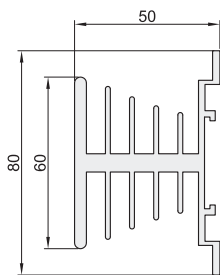


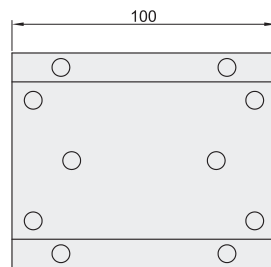
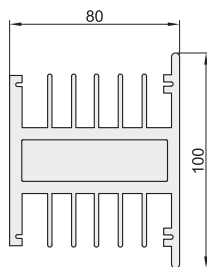
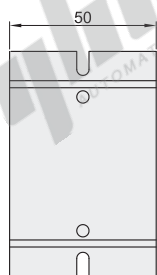
代码	类型	
ZHL26	一般固态继电器专用配件	散热器



形状: A



形状: D



视角标准: 第一视角

型号		适用继电器	热阻 °C/W	重量 (g)
代码	形状			
ZHL26	A	ZHL13 ZHL15 ZHL18	2.1	115
	D	ZHL21 ZHL19	0.9	560



型号		适用继电器
代码	形状	
ZHL26	A	ZHL13 ZHL15 ZHL18
ZHL26	D	ZHL21 ZHL19

ZHL26-A

