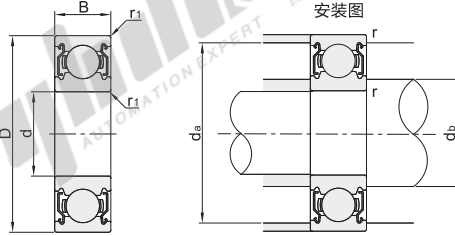


# 双面带防尘盖式 标准型

# 微型深沟球轴承

| 代码           | 类型  | 轴承类型<br>代码 | 轴承精度          | 后置代码       | 轴承材质     |        |
|--------------|-----|------------|---------------|------------|----------|--------|
|              |     |            |               |            | 国标       | 相当     |
| BAF          | 标准型 | 6          | GB/T 307.1 6级 | ZZ(双面带防尘盖) | GCr15    | SUJ2   |
| BAF...-SUS   |     |            |               |            | 2Gr13    | SUS420 |
| BAF07...-SUS |     |            |               |            | 0Cr18Ni9 | SUS304 |



❗ 不承诺品牌。  
❗ 基本额定负载/容许转速/重量值不适用于SUS304和SUS420材质。



| 型号    |        | d   | D   | B    | r1<br>(min) | 基本额定负载(N) |        |             | 极限转速<br>rpm(参考) | 安装尺寸        |            |             | 重量(g)<br>(参考) |
|-------|--------|-----|-----|------|-------------|-----------|--------|-------------|-----------------|-------------|------------|-------------|---------------|
| 代码    | 轴承型号   |     |     |      |             | Cr(动)     | Cor(静) | da<br>(min) |                 | da<br>(max) | r<br>(max) | da<br>(min) |               |
| BAF   | 682ZZ  | 2   | 5   | 2.3  | 0.08        | 80        | 51     | 74000       | 2.8             | 4.2         | 0.08       | 0.13        |               |
|       | 692ZZ  | 2   | 6   | 3    | 0.15        | 150       | 89     | 67000       | 3.2             | 4.8         | 0.15       | 0.31        |               |
|       | 602ZZ  | 2.5 | 7   | 3.5  | 0.08        | 80        | 73     | 65000       | 3.1             | 4.8         | 0.08       | 0.22        |               |
|       | 682AZZ | 2.5 | 7   | 3.5  | 0.15        | 150       | 96     | 59000       | 3.7             | 5.8         | 0.15       | 0.43        |               |
|       | 692AZZ | 2.5 | 6   | 2.5  | 0.08        | 80        | 94     | 60000       | 3.6             | 5.4         | 0.08       | 0.2         |               |
|       | 673ZZ  | 3   | 7   | 3    | 0.1         | 100       | 130    | 58000       | 3.9             | 5.8         | 0.1        | 0.33        |               |
|       | 683ZZ  | 3   | 8   | 4    | 0.15        | 150       | 180    | 54000       | 4.2             | 7.8         | 0.15       | 0.92        |               |
|       | 693ZZ  | 3   | 9   | 5    | 0.15        | 150       | 219    | 50000       | 4.2             | 7.8         | 0.15       | 0.92        |               |
|       | 603ZZ  | 3   | 10  | 4    | 0.08        | 80        | 224    | 50000       | 4.6             | 8.8         | 0.08       | 0.28        |               |
|       | 623ZZ  | 3   | 13  | 5    | 0.2         | 130       | 488    | 40000       | 4.6             | 11.4        | 0.2        | 3.43        |               |
|       | 633ZZ  | 3   | 7   | 2.5  | 0.08        | 222       | 88     | 60000       | 6               | 14          | 0.3        | 5.1         |               |
|       | 674ZZ  | 4   | 9   | 0.15 | 150         | 224       | 49000  | 5           | 7.8             | 0.1         | 0.76       |             |               |
|       | 684ZZ  | 4   | 11  | 4    | 0.2         | 200       | 276    | 45000       | 5.2             | 9.8         | 0.2        | 2.3         |               |
|       | 694ZZ  | 4   | 12  | 5    | 0.2         | 200       | 360    | 43000       | 5.6             | 10.4        | 0.2        | 3.5         |               |
|       | 604ZZ  | 4   | 13  | 5    | 0.3         | 300       | 490    | 42000       | 6               | 14          | 0.3        | 5.1         |               |
|       | 624ZZ  | 4   | 16  | 8    | 0.08        | 80        | 680    | 37000       | 6               | 14          | 0.3        | 5.1         |               |
|       | 634ZZ  | 4   | 8   | 2.5  | 0.08        | 80        | 91     | 49000       | 5.6             | 7.4         | 0.08       | 0.32        |               |
|       | 675ZZ  | 5   | 11  | 5    | 0.15        | 150       | 282    | 43000       | 6.2             | 9.8         | 0.15       | 1.1         |               |
|       | 685ZZ  | 5   | 13  | 4    | 0.2         | 200       | 430    | 40000       | 6.6             | 11.4        | 0.2        | 2.4         |               |
|       | 695ZZ  | 5   | 14  | 5    | 0.2         | 200       | 505    | 39000       | 6.6             | 12.4        | 0.2        | 3.5         |               |
|       | 605ZZ  | 5   | 16  | 6    | 0.3         | 300       | 680    | 37000       | 7               | 14          | 0.3        | 4.8         |               |
|       | 625ZZ  | 5   | 19  | 6    | 0.3         | 300       | 885    | 34000       | 7               | 17          | 0.3        | 8           |               |
|       | 635ZZ  | 5   | 10  | 3    | 0.1         | 496       | 218    | 45000       | 7.04            | 9.3         | 0.1        | 0.7         |               |
|       | 676ZZ  | 6   | 13  | 5    | 0.15        | 1080      | 440    | 39000       | 7               | 11.8        | 0.2        | 1.9         |               |
| 686ZZ | 6      | 15  | 5   | 0.2  | 1350        | 530       | 37000  | 7.6         | 13.4            | 0.2         | 3.8        |             |               |
| 696ZZ | 6      | 17  | 6   | 0.3  | 2190        | 865       | 38000  | 8           | 17              | 0.3         | 8.1        |             |               |
| 606ZZ | 6      | 19  | 6   | 0.3  | 2340        | 885       | 34000  | 8           | 17              | 0.3         | 8.1        |             |               |
| 626ZZ | 6      | 22  | 7   | 0.15 | 1170        | 505       | 37000  | 8.2         | 12.8            | 0.2         | 2.1        |             |               |
| 636ZZ | 6      | 14  | 5   | 0.15 | 1170        | 505       | 37000  | 8.2         | 12.8            | 0.2         | 2.1        |             |               |
| 677ZZ | 7      | 17  | 7   | 0.3  | 1610        | 715       | 35000  | 9           | 17              | 0.3         | 8          |             |               |
| 687ZZ | 7      | 19  | 6   | 0.3  | 2240        | 910       | 34000  | 9           | 17              | 0.3         | 8          |             |               |
| 697ZZ | 7      | 22  | 7   | 0.3  | 3350        | 1400      | 32000  | 10          | 20              | 0.3         | 12         |             |               |
| 607ZZ | 7      | 12  | 3.5 | 0.1  | 543         | 274       | 40000  | 8           | 11.33           | 0.1         | 0.99       |             |               |
| 627ZZ | 7      | 16  | 5   | 0.2  | 1610        | 1400      | 35000  | 9.6         | 14.4            | 0.2         | 3.1        |             |               |
| 678ZZ | 8      | 19  | 6   | 0.3  | 1990        | 865       | 33000  | 10          | 17              | 0.3         | 8          |             |               |
| 688ZZ | 8      | 22  | 7   | 0.3  | 3350        | 1400      | 32000  | 10          | 20              | 0.3         | 12         |             |               |
| 698ZZ | 8      | 24  | 8   | 0.3  | 4000        | 1590      | 31000  | 10          | 22              | 0.3         | 17         |             |               |
| 608ZZ | 8      | 28  | 9   | 0.3  | 4560        | 1983      | 28000  | 11          | 26              | 0.3         | 30.3       |             |               |
| 628ZZ | 8      | 17  | 5   | 0.2  | 1720        | 820       | 33000  | 10.6        | 15.4            | 0.2         | 3.2        |             |               |
| 638ZZ | 8      | 20  | 6   | 0.3  | 2480        | 1090      | 32000  | 11          | 18              | 0.3         | 8.2        |             |               |
| 689ZZ | 8      | 24  | 7   | 0.3  | 3400        | 1450      | 31000  | 11          | 22              | 0.3         | 14         |             |               |
| 699ZZ | 8      | 26  | 8   | 0.6  | 4550        | 1960      | 30000  | 13          | 22              | 0.6         | 20         |             |               |
| 629ZZ | 8      | 26  | 8   | 0.6  | 4550        | 1960      | 30000  | 13          | 22              | 0.6         | 20         |             |               |

❗ 1Kg=9.81N

| 型号    |      | d  | D | B    | r1<br>(min) | 基本额定负载(N) |        |             | 极限转速<br>rpm(参考) | 安装尺寸        |            |             | 重量(g)<br>(参考) |
|-------|------|----|---|------|-------------|-----------|--------|-------------|-----------------|-------------|------------|-------------|---------------|
| 代码    | 轴承型号 |    |   |      |             | Cr(动)     | Cor(静) | da<br>(min) |                 | da<br>(max) | r<br>(max) | da<br>(min) |               |
| 683ZZ | 3    | 7  | 3 | 0.1  | 390         | 130       | 63000  | 3.9         | 5.8             | 0.1         | 0.45       |             |               |
| 693ZZ | 3    | 8  | 4 | 0.15 | 560         | 180       | 60000  | 4.2         | 6.8             | 0.15        | 0.61       |             |               |
| 603ZZ | 3    | 9  | 5 | 0.15 | 571         | 189       | 56000  | 4.2         | 7.8             | 0.15        | 1.13       |             |               |
| 623ZZ | 3    | 10 | 4 | 0.08 | 640         | 224       | 50000  | 4.6         | 8.8             | 0.08        | 1.6        |             |               |
| 684ZZ | 4    | 9  | 5 | 0.15 | 640         | 224       | 53000  | 5           | 7.8             | 0.15        | 1.01       |             |               |
| 694ZZ | 4    | 11 | 4 | 0.15 | 715         | 276       | 48000  | 5.2         | 9.8             | 0.15        | 1.8        |             |               |
| 604ZZ | 4    | 12 | 5 | 0.2  | 957         | 350       | 44000  | 5.6         | 10.4            | 0.2         | 2.34       |             |               |
| 624ZZ | 4    | 13 | 5 | 0.2  | 1310        | 490       | 40000  | 6.2         | 11.4            | 0.2         | 3.2        |             |               |
| 685ZZ | 5    | 11 | 5 | 0.15 | 715         | 282       | 45000  | 6.2         | 9.8             | 0.15        | 1.96       |             |               |
| 695ZZ | 5    | 13 | 4 | 0.2  | 1080        | 430       | 43000  | 6.6         | 11.4            | 0.2         | 2.4        |             |               |
| 605ZZ | 5    | 14 | 5 | 0.2  | 1330        | 505       | 40000  | 6.6         | 12.4            | 0.2         | 3.5        |             |               |
| 625ZZ | 5    | 16 | 5 | 0.3  | 1760        | 680       | 36000  | 7           | 14              | 0.3         | 4.8        |             |               |
| 635ZZ | 5    | 19 | 6 | 0.3  | 2336        | 896       | 32000  | 7           | 17              | 0.3         | 8.89       |             |               |
| 686ZZ | 6    | 13 | 5 | 0.16 | 1080        | 440       | 40000  | 7           | 11.8            | 0.2         | 2.69       |             |               |
| 696ZZ | 6    | 15 | 5 | 0.2  | 1350        | 530       | 37000  | 7.6         | 13.4            | 0.2         | 3.8        |             |               |
| 606ZZ | 6    | 17 | 6 | 0.3  | 2190        | 865       | 38000  | 8           | 17              | 0.3         | 8.1        |             |               |
| 626ZZ | 6    | 19 | 6 | 0.3  | 2340        | 885       | 32000  | 8           | 17              | 0.3         | 8.1        |             |               |
| 636ZZ | 6    | 22 | 7 | 0.3  | 3333        | 1423      | 30000  | 8           | 20              | 0.3         | 14.5       |             |               |
| 687ZZ | 7    | 14 | 5 | 0.15 | 1170        | 505       | 40000  | 8.2         | 12.8            | 0.15        | 2.97       |             |               |
| 697ZZ | 7    | 17 | 5 | 0.15 | 1610        | 710       | 36000  | 9           | 17              | 0.3         | 5.12       |             |               |
| 607ZZ | 7    | 19 | 6 | 0.3  | 2340        | 885       | 30000  | 9           | 17              | 0.3         | 7.51       |             |               |
| 627ZZ | 7    | 22 | 7 | 0.3  | 3300        | 1370      | 30000  | 10          | 20              | 0.3         | 12.9       |             |               |
| 688ZZ | 8    | 16 | 5 | 0.2  | 1610        | 715       | 36000  | 9.6         | 14.4            | 0.2         | 4.02       |             |               |
| 698ZZ | 8    | 19 | 6 | 0.3  | 1990        | 865       | 34000  | 10          | 17              | 0.3         | 7.3        |             |               |
| 608ZZ | 8    | 22 | 7 | 0.3  | 3350        | 1400      | 34000  | 10          | 20              | 0.3         | 12         |             |               |
| 628ZZ | 8    | 24 | 8 | 0.3  | 4000        | 1590      | 28000  | 10.6        | 15.4            | 0.2         | 17         |             |               |
| 689ZZ | 8    | 17 | 5 | 0.2  | 1720        | 820       | 33000  | 10.6        | 15.4            | 0.2         | 3.2        |             |               |
| 699ZZ | 8    | 20 | 6 | 0.3  | 2480        | 1090      | 32000  | 11          | 18              | 0.3         | 8.2        |             |               |
| 609ZZ | 8    | 24 | 7 | 0.3  | 3400        | 1450      | 31000  | 11          | 22              | 0.3         | 14         |             |               |
| 629ZZ | 8    | 26 | 8 | 0.6  | 4550        | 1960      | 30000  | 13          | 22              | 0.6         | 20         |             |               |

❗ 1Kg=9.81N

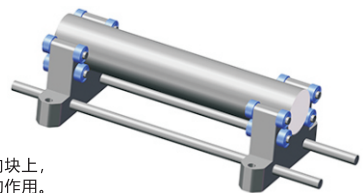


| 型号    |       |   |
|-------|-------|---|
| 代码    | 轴承型号  | d |
| 682ZZ | 682ZZ | 2 |
| 692ZZ | 692ZZ | 2 |
| 602ZZ | 602ZZ | 2 |

BAF682ZZ



| 优惠价 |      |
|-----|------|
| 数量  | 价格   |
| 1~9 | 100% |
| 10~ | 另行报价 |



❗ 深沟球轴承装配在导向块上，对其他工件起到导向的作用。