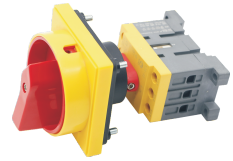


万能转换开关 ◀ 隔离型

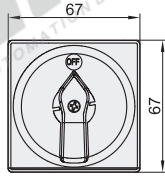
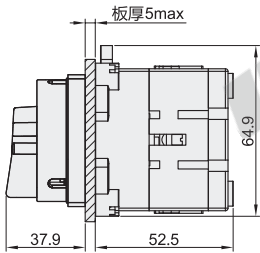
代码	类型	材质
ZHB03	隔离型	塑料



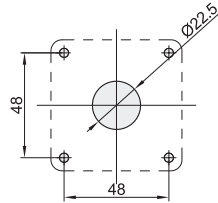
特点:

- 操控方式简单易懂;
- 所有端子的连接片皆以护盖保护, 避免误触电源;
- 支持底板安装和导轨安装。

电流: 25A/32A/40A

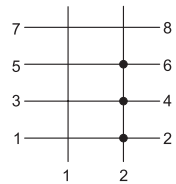


固定孔尺寸

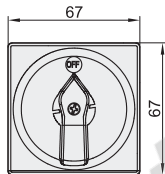
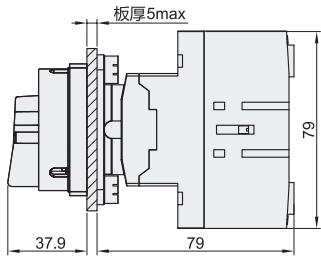


线路图

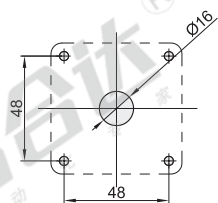
极数: 3



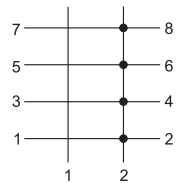
电流: 63A/80A



固定孔尺寸



极数: 4



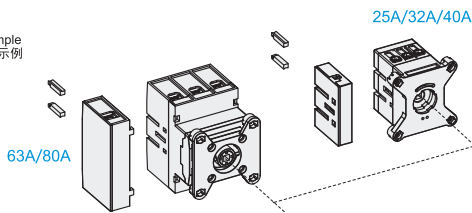
型号		电流(A)	安装方式	防护等级
代码	极数			
ZHB03	3	25	面板安装	IP65
		32		
		40		
		63		
	4	25		
		32		
		40		



型号		电流(A)
代码	极数	
ZHB03	3	25
		32

ZHB03 - 3 - 25

EX Example 使用示例



蜂鸣器、按钮盒
开关按钮、指示灯

