

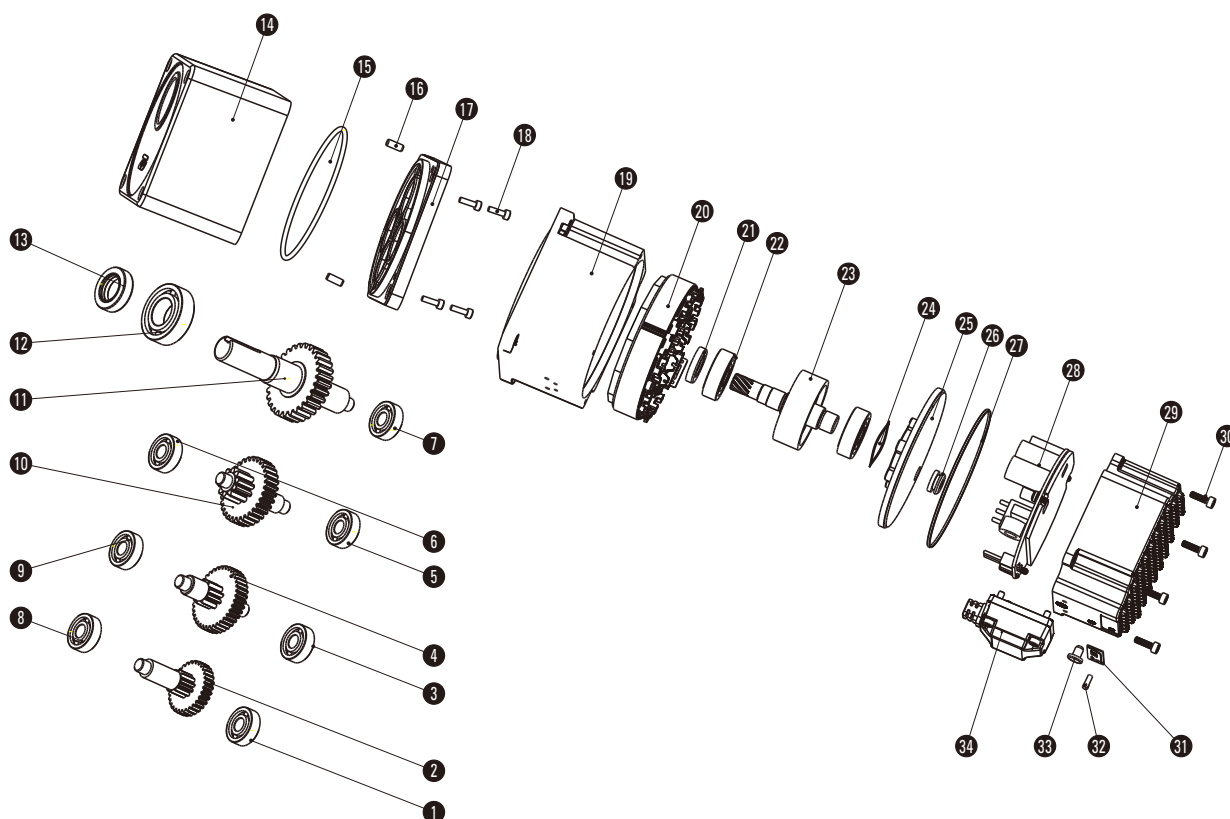
## 型号阅读方法 PRODUCT CODE

### ■ K2系列电机 K2-series

Z5  
①
BLDY  
②
120 - 220  
③      ④
GK - 20S - Q / 5GU  
⑤      ⑥      ⑦
20K2  
⑧

①	机座号：60×60 (Z2-60×60/Z4-80×80/Z5-90×90/Z6-104×104)	Size: 60×60 (Z2-60×60/Z4-80×80/Z5-90×90/Z6-104×104)
②	电机类型：一体式无刷	Motor type: Brushless one-piece
③	功率：120W	Power: 120W
④	电压：220VAC	Voltage: 220VAC
⑤	减速器类型：GK (K2系列减速器)	Type of reducer: GK (K2-series reducer)
⑥	转速：2000rpm	Speed: 2000rpm
⑦	减速器机座：60 (2GN-60×60/4GN-80×80/5GN/5GU-90×90/6GU-104×104)	Reducer size: 60 (2GN-60×60/4GN-80×80/5GN/5GU-90×90/6GU-104×104)
⑧	速比：20	Ratio: 20

### ■ 产品爆炸图 Product explosion diagram



### ■ 明细表 Parts list

1: 轴承 Bearing	9: 轴承 Bearing	17: 箱盖 Gearbox cover	24: 波形弹性垫圈 Spring wave washer	30: 内六角圆柱头螺钉 Hexagon cylindrical head
2: 一级传动轴 1st follower	10: 三级传动轴 3rd follower	18: 内六角圆柱头螺钉 Hexagon socket head screws	25: 后端盖 Back cover	31: 面贴 Surface mount
3: 轴承 Bearing	11: 输出轴 Output shaft	19: 机壳 Shell	26: 护线圈 Wire grommet	32: 导光柱 Light guide
4: 二级传动轴 2nd follower	12: 轴承 Bearing	20: 嵌线定子 Stator core	27: O型圈 O-ring	33: 橡胶塞 Rubber stopper
5: 轴承 Bearing	13: 油封 Oil seal	21: 油封 Oil seal	28: 驱动板组件 Drive board assembly	34: 接线盒组件 Wiring box assembly
6: 轴承 Bearing	14: 箱体 Gearbox housing	22: 轴承 Bearing	29: 驱动器罩 Drive cover	
7: 轴承 Bearing	15: O型圈 O-ring	23: 转子 Rotor		
8: 轴承 Bearing	16: 定位销 Locating pin			

# K2系列直流无刷减速电机 (15W)

## K2 SERIES GEAR MOTOR (15W)

### 命名 Name

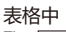
#### ● 平行轴减速机 Parallel shaft reducer


型号 Model number	电机型号 Motor type	减速器型号 Type of reducer	减速比 Ratio
Z2BLDY15-22GK-20S-Q/2GN□K2	Z2BLDY15-22GK-20S-Q	2GN□K2	5 ~ 100

### 容许力矩 Allowable torque

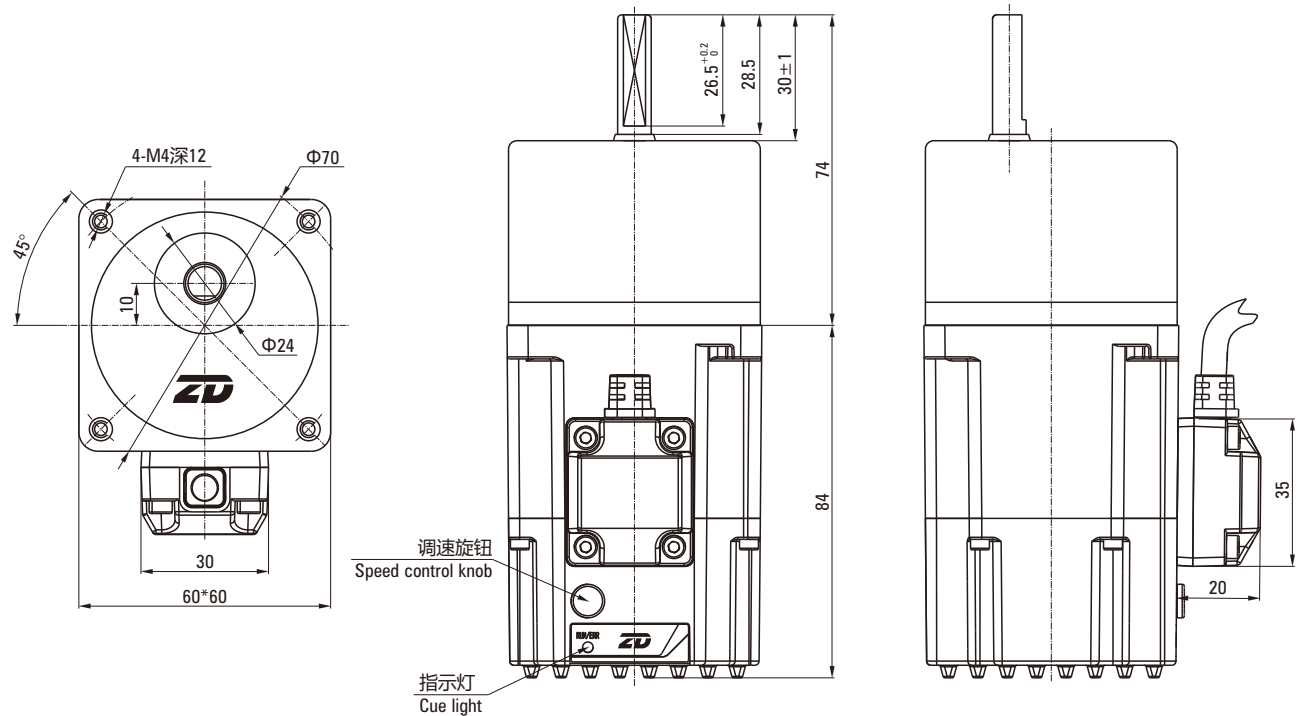
单位 Unit: N·m

输出功率 Output power	电机转速 Motor speed	减速比 Ratio						
		5	10	15	20	30	50	100
15W	2000rpm	0.29	0.58	0.87	1.04	1.57	2.61	4.70

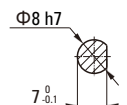
注Note: 表格中  (灰底部分) 表示齿轮箱出轴旋向与电机的旋转方向为反方向。其他则为相同方向。

The  (gray) indicates that the rotation direction of the gearbox shaft is opposite to the rotation direction of the motor. Others are in the same direction.

### 外形图 Dimensional drawing



#### ● 输出轴结构 Output shaft structure



线束颜色 Wire harness color	线束定义 Definition of wiring harness	接线说明 Wiring instructions
红色 Red	L	DIR接L正转 DIR connected to L in forward rotation
蓝色 Blue	N	
白色 White	DIR	
黄绿双色 Yellow green dual color	PE	DIR接N反转 DIR to N inversion

# K2系列直流无刷减速电机 (40W)

## K2 SERIES GEAR MOTOR (40W)

### 命名 Name

#### ● 平行轴减速机 Parallel shaft reducer

型号 Model number	电机型号 Motor type	减速器型号 Type of reducer	减速比 Ratio
Z4BLDY40-22GK-20S-Q/4GN□K2	Z4BLDY40-22GK-20S-Q	4GN□K2	5 ~ 100

### 容许力矩 Allowable torque

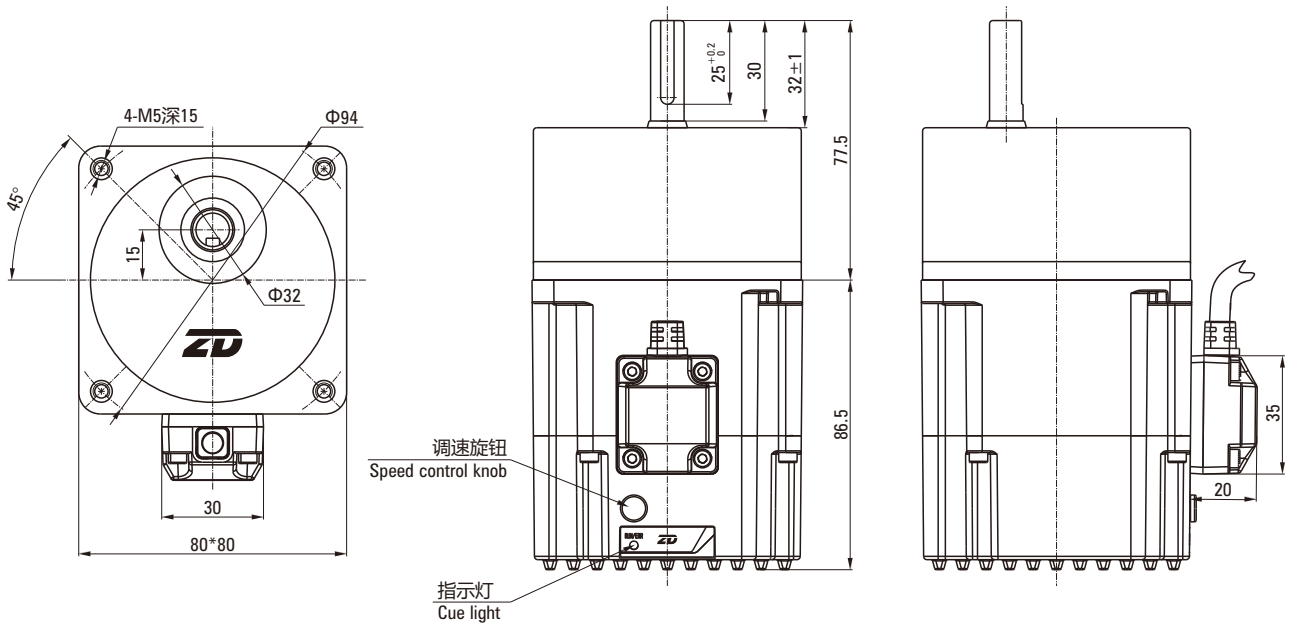
单位 Unit: N·m

输出功率 Output power	电机转速 Motor speed	减速比 Ratio							
		5	10	15	20	30	50	100	
40W	2000rpm	0.77	1.55	2.32	3.09	4.18	6.96	12.00	

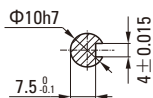
注Note: 表格中   (灰底部分) 表示齿轮箱出轴方向与电机的旋转方向为反方向。其他则为相同方向。

The   (gray) indicates that the rotation direction of the gearbox shaft is opposite to the rotation direction of the motor. Others are in the same direction.

### 外形图 Dimensional drawing



#### ● 输出轴结构 Output shaft structure



线束颜色 Wire harness color	线束定义 Definition of wiring harness	接线说明 Wiring instructions
红色 Red	L	DIR接L正转 DIR connected to L in forward rotation
蓝色 Blue	N	
白色 White	DIR	
黄绿双色 Yellow green dual color	PE	DIR接N反转 DIR to N inversion

# K2系列直流无刷减速电机 (120W)

## K2 SERIES GEAR MOTOR (120W)

### 命名 Name

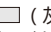
- 平行轴减速机 Parallel shaft reducer

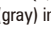
型号 Model number	电机型号 Motor type	减速器型号 Type of reducer	减速比 Ratio
Z5BLDY120-220GK-20S-Q/5GN□K2	Z5BLDY120-220GK-20S-Q	5GN□K2	5 ~ 100

### 容许力矩 Allowable torque

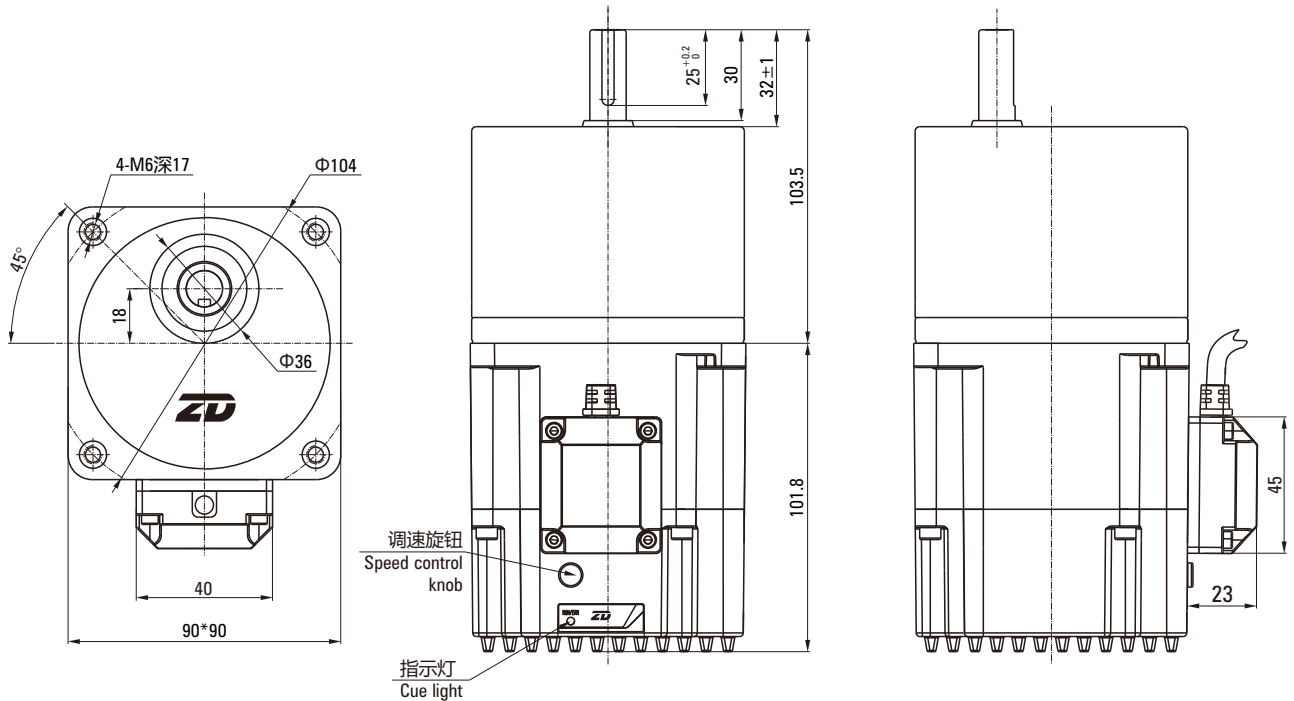
单位 Unit: N·m

输出功率 Output power	电机转速 Motor speed	减速比 Ratio						
		5	10	15	20	30	50	100
120W	2000rpm	2.32	4.64	6.27	7.52	11.28	18.80	30.00

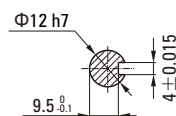
注Note: 表格中  (灰底部分) 表示齿轮箱出轴旋向与电机的旋转方向为反方向。其他则为相同方向。

The  (gray) indicates that the rotation direction of the gearbox shaft is opposite to the rotation direction of the motor. Others are in the same direction.

### 外形图 Dimensional drawing



- 输出轴结构 Output shaft structure



线束颜色 Wire harness color	线束定义 Definition of wiring harness	接线说明 Wiring instructions
红色 Red	L	DIR接L正转 DIR connected to L in forward rotation
蓝色 Blue	N	
白色 White	DIR	
黄绿双色 Yellow green dual color	PE	DIR接N反转 DIR to N inversion

# K2系列直流无刷减速电机 (120W)

## K2 SERIES GEAR MOTOR (120W)

### 命名 Name

#### ● 平行轴减速机 Parallel shaft reducer

型号 Model number	电机型号 Motor type	减速器型号 Type of reducer	减速比 Ratio
Z5BLDY120-220GK-20S-Q/5GU□K2	Z5BLDY120-220GK-20S-Q	5GU□K2	5 ~ 100

### 容许力矩 Allowable torque

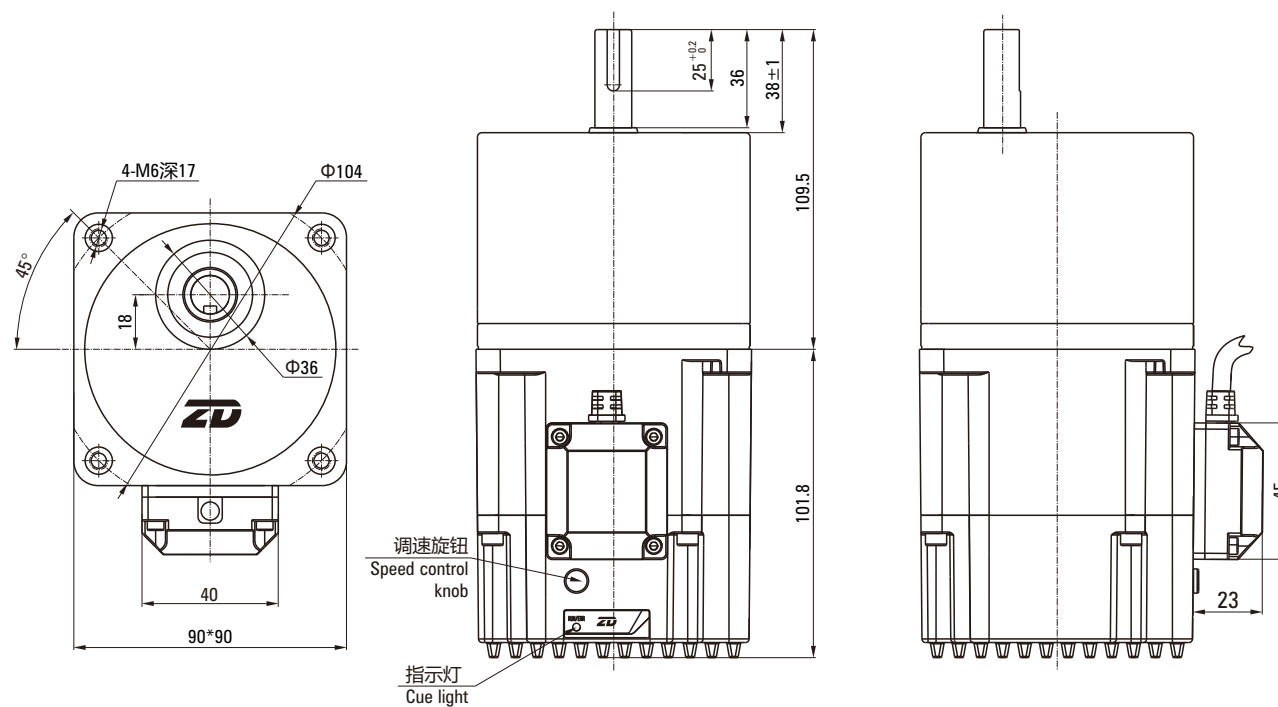
单位 Unit: N·m

输出功率 Output power	电机转速 Motor speed	减速比 Ratio							
		5	10	15	20	30	50	100	
120W	2000rpm	2.32	4.64	6.27	7.52	11.28	18.80	30.00	

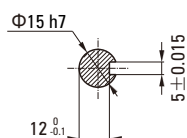
注Note: 表格中  (灰底部分) 表示齿轮箱出轴轴向与电机的旋转方向为反方向。其他则为相同方向。

The  (gray) indicates that the rotation direction of the gearbox shaft is opposite to the rotation direction of the motor. Others are in the same direction.

### 外形图 Dimensional drawing



#### ● 输出轴结构 Output shaft structure



线束颜色 Wire harness color	线束定义 Definition of wiring harness	接线说明 Wiring instructions
红色 Red	L	DIR接L正转 DIR connected to L in forward rotation
蓝色 Blue	N	
白色 White	DIR	
黄绿双色 Yellow green dual color	PE	DIR接N反转 DIR to N inversion

# K2系列直流无刷减速电机 (200W)

## K2 SERIES GEAR MOTOR (200W)

### 命名 Name

#### ● 平行轴减速机 Parallel shaft reducer

型号 Model number	电机型号 Motor type	减速器型号 Type of reducer	减速比 Ratio
Z6BLDY200-220GK-20S-Q/6GU□K2	Z6BLDY200-220GK-20S-Q	6GU□K2	5 ~ 100

### 容许力矩 Allowable torque

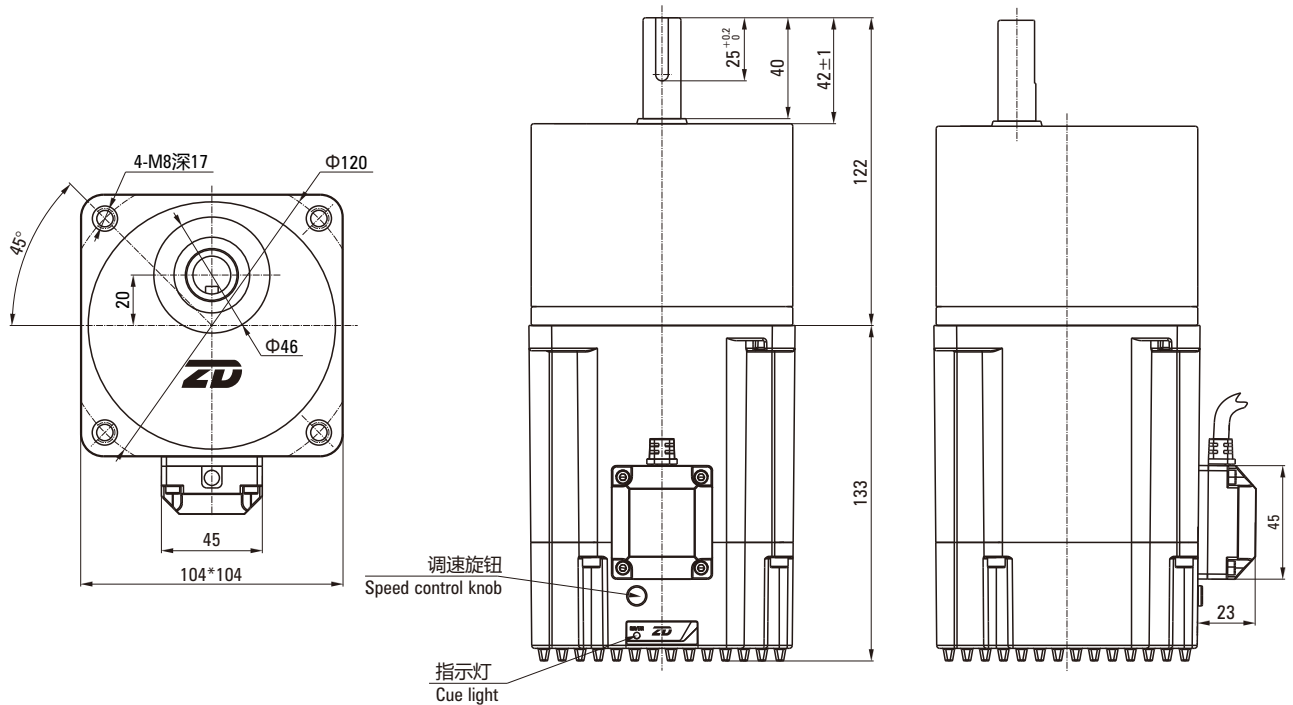
单位 Unit: N·m

输出功率 Output power	电机转速 Motor speed	减速比 Ratio						
		5	10	15	20	30	50	100
200W	2000rpm	3.87	7.74	10.44	12.53	18.80	31.33	50.00

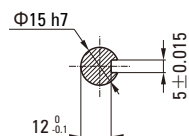
注Note: 表格中 (灰底部分) 表示齿轮箱出轴旋向与电机的旋转方向为反方向。其他则为相同方向。

The (gray) indicates that the rotation direction of the gearbox shaft is opposite to the rotation direction of the motor. Others are in the same direction.

### 外形图 Dimensional drawing



#### ● 输出轴结构 Output shaft structure



线束颜色 Wire harness color	线束定义 Definition of wiring harness	接线说明 Wiring instructions
红色 Red	L	DIR接L正转 DIR connected to L in forward rotation
蓝色 Blue	N	
白色 White	DIR	
黄绿双色 Yellow green dual color	PE	DIR接N反转 DIR to N inversion

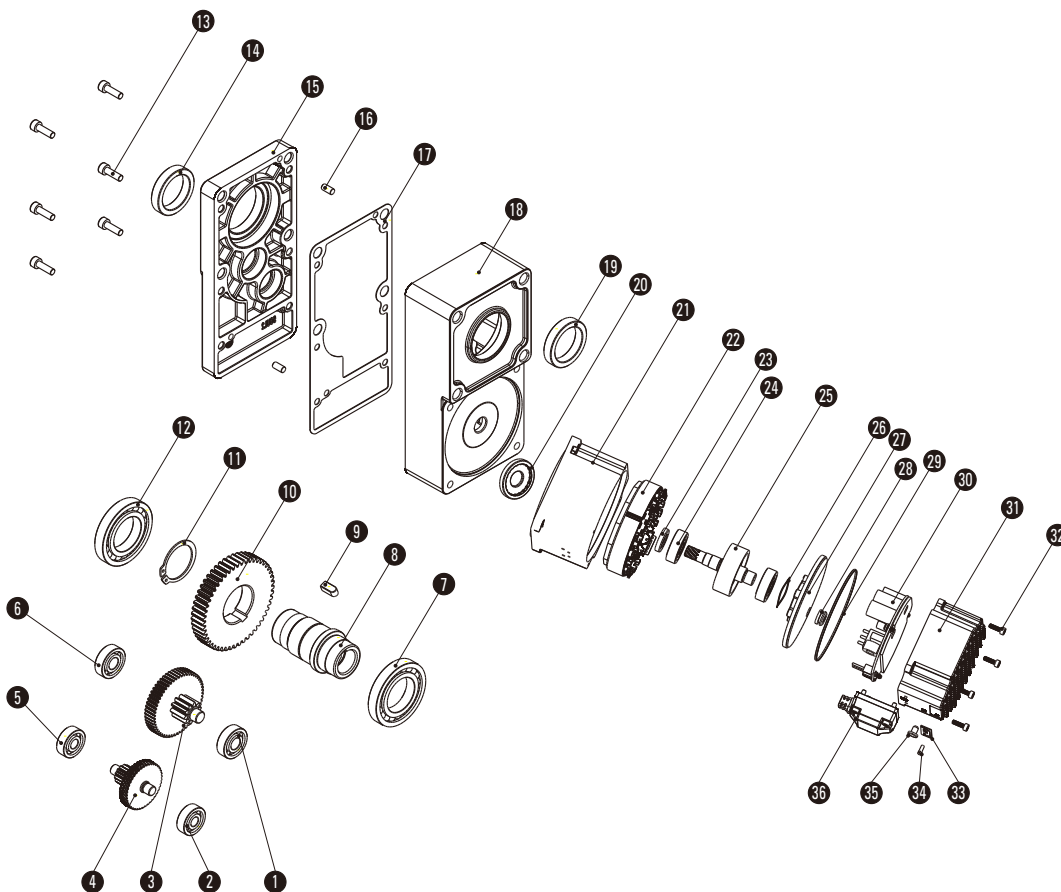
## 型号阅读方法 PRODUCT CODE

### ■ L2系列电动机 L2-series

$\frac{Z5}{①}$      $\frac{BLDY}{②}$      $\frac{120}{③}$  -  $\frac{220}{④}$      $\frac{GKL}{⑤}$  -  $\frac{20S}{⑥}$  - Q /  $\frac{5GU}{⑦}$      $\frac{50L2}{⑧}$

①	机座号：60×60 (Z2-60×60/Z4-80×80/Z5-90×90/Z6-104×104)	Size: 60×60 (Z2-60×60/Z4-80×80/Z5-90×90/Z6-104×104)
②	电机类型：一体式无刷	Motor type: Brushless one-piece
③	功率：120W	Power: 120W
④	电压：220VAC	Voltage: 220VAC
⑤	减速器类型：GKL (L2系列减速器)	Type of reducer: GK L(L2-Series reducer)
⑥	转速：2000rpm	Speed: 2000rpm
⑦	减速器机座：60 (2GN-60×60/4GN-80×80/5GU-90×90/6GU-104×104)	Reducer size: 60 (2GN-60×60/4GN-80×80/5GU-90×90/6GU-104×104)
⑧	速比：50	Ratio: 50

### ■ 产品爆炸图 Product explosion diagram



### ■ 明细表 Parts list

1/2: 轴承 Bearing	10: 三级从齿 Three-stage slave	17: 密封垫片 Sealing washer	25: 转子 Rotor	31: 驱动器罩 Drive cover
3: 二级传动轴 2nd follower	11: C-挡圈 Snap ring	18: 箱体 Gearbox housing	26: 波形弹性垫圈 Spring wave washer	32: 内六角圆柱头螺钉 Hexagon cylindrical head
4: 一级传动轴 1st follower	12: 轴承 Bearing	19: 油封 Oil seal	27: 后端盖 Back cover	33: 面贴 Surface mount
5: 轴承 Bearing	13: 内六角圆柱头螺钉 Hexagon socket head screws	20: 密封垫圈 Sealing washer	28: 护线圈 Wire grommet	34: 导光柱 Light guide
6: 轴承 Bearing	14: 油封 Oil seal	21: 机壳 Shell	29: O型圈 O-ring	35: 橡胶塞 Rubber stopper
7: 轴承 Bearing	15: 箱盖 Box cover	22: 嵌线定子 Stator core	30: 驱动板组件 Drive board assembly	36: 接线盒组件 Wiring box assembly
8: 输出轴 Output shaft	16: 定位销 Locating pin	23: 油封 Oil seal		
9: 键 Keys		24: 轴承 Bearing		

# L2系列直流无刷减速电机 (15W)

## L2 SERIES GEAR MOTOR (15W)

### 命名 Name

- 平行轴减速机 Parallel shaft reducer

型号 Model number	电机型号 Motor type	减速器型号 Type of reducer	减速比 Ratio
Z2BLDY15-22GKL-20S-Q/2GN□L2	Z2BLDY15-22GKL-20S-Q	2GN□L2	5 ~ 100

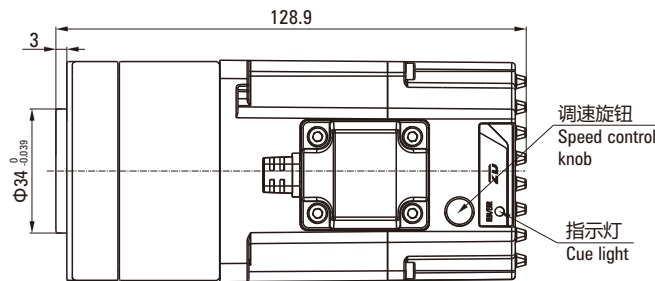
### 容许力矩 Allowable torque

单位 Unit: N·m

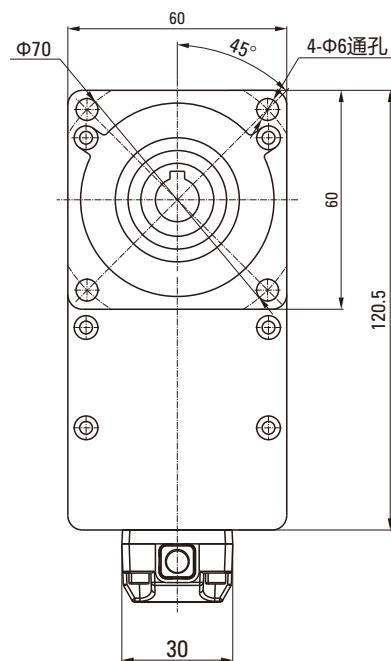
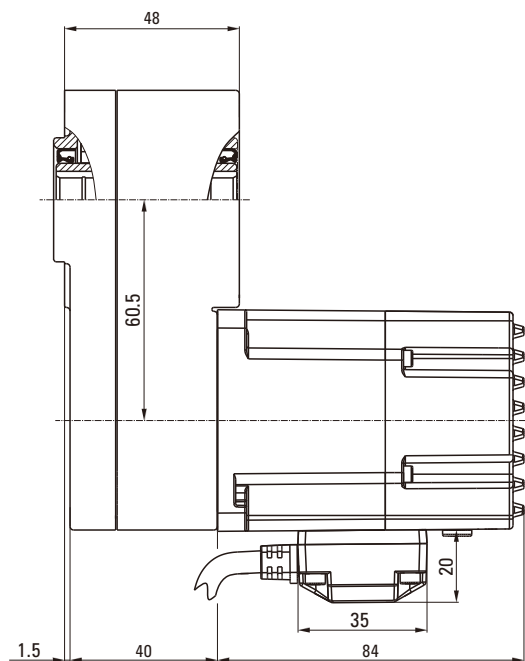
输出功率 Output power	电机转速 Motor speed	减速比 Ratio						
		5	10	15	20	30	50	100
15W	2000rpm	0.26	0.52	0.78	1.04	1.57	2.61	5.22

注Note: 表格中所有出轴旋转方向与电机转向相反。All shaft rotation directions in the table are opposite to motor steering.  
(不同转速及速比下的力矩为ZD标准驱动器下测试所得。The torque under different speed and speed ratio is obtained under the ZD standard)

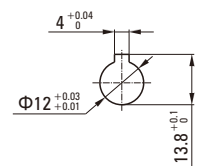
### 外形图 Dimensional drawing



线束颜色 Wire harness color	线束定义 Definition of wiring harness	接线说明 Wiring instructions
红色 Red	L	DIR接L正转 DIR connected to L in forward rotation DIR接N反转 DIR to N inversion
蓝色 Blue	N	
白色 White	DIR	
黄绿双色 Yellow green dual color	PE	



### 输出轴结构 Output shaft structure



# L2系列直流无刷减速电机 (40W)

## L2 SERIES GEAR MOTOR (40W)

### 命名 Name

- 平行轴减速机 Parallel shaft reducer

型号 Model number	电机型号 Motor type	减速器型号 Type of reducer	减速比 Ratio
Z4BLDY40-22GKL-20S-Q/4GN□L2	Z4BLDY40-22GKL-20S-Q	4GN□L2	5 ~ 100

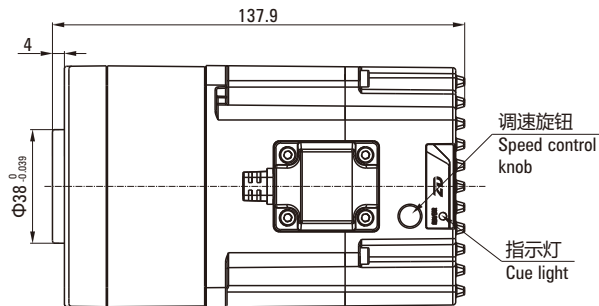
### 容许力矩 Allowable torque

单位 Unit: N·m

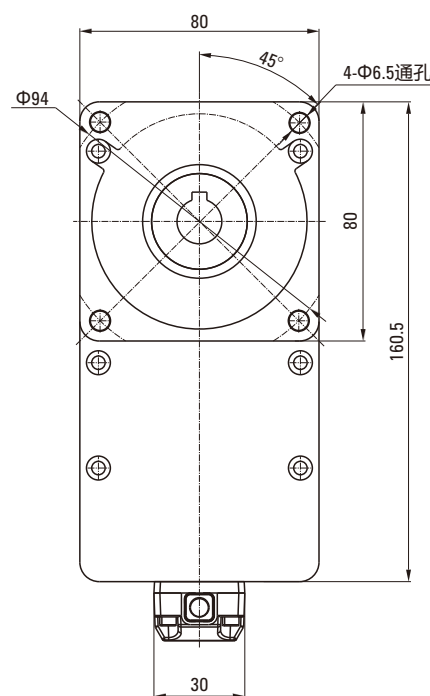
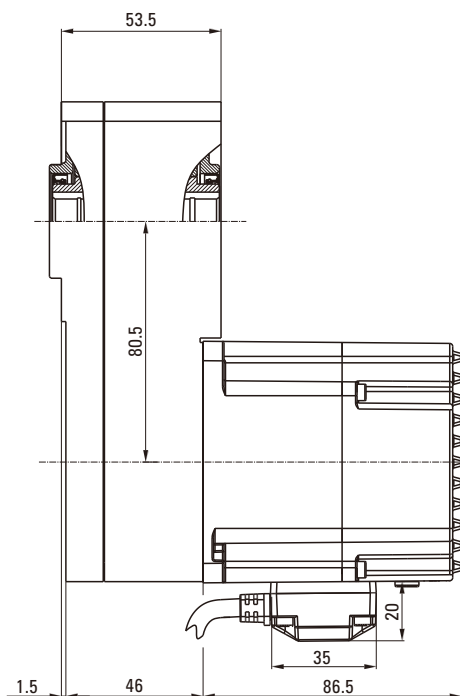
输出功率 Output power	电机转速 Motor speed	减速比 Ratio							
		5	10	15	20	30	50	100	
40W	2000rpm	0.70	1.39	2.09	2.78	4.18	6.96	14.00	

注Note：表格中所有出轴旋转方向与电机转向相反。All shaft rotation directions in the table are opposite to motor steering.  
(不同转速及速比下的力矩为ZD标准驱动器下测试所得。The torque under different speed and speed ratio is obtained under the ZD standard)

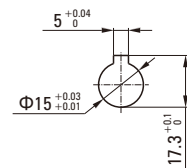
### 外形图 Dimensional drawing



线束颜色 Wire harness color	线束定义 Definition of wiring harness	接线说明 Wiring instructions
红色 Red	L	DIR接L正转 DIR connected to L in forward rotation
蓝色 Blue	N	
白色 White	DIR	
黄绿双色 Yellow green dual color	PE	DIR接N反转 DIR to N inversion



### 输出轴结构 Output shaft structure



# L2系列直流无刷减速电机 (120W)

## L2 SERIES GEAR MOTOR (120W)

### 命名 Name

- 平行轴减速机 Parallel shaft reducer

型号 Model number	电机型号 Motor type	减速器型号 Type of reducer	减速比 Ratio
Z5BLDY120-220GKL-20S-Q/5GU□L2	Z5BLDY120-220GKL-20S-Q	5GU□L2	5 ~ 100

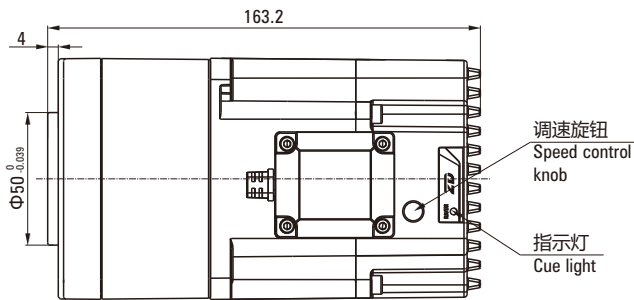
### 容许力矩 Allowable torque

单位 Unit: N·m

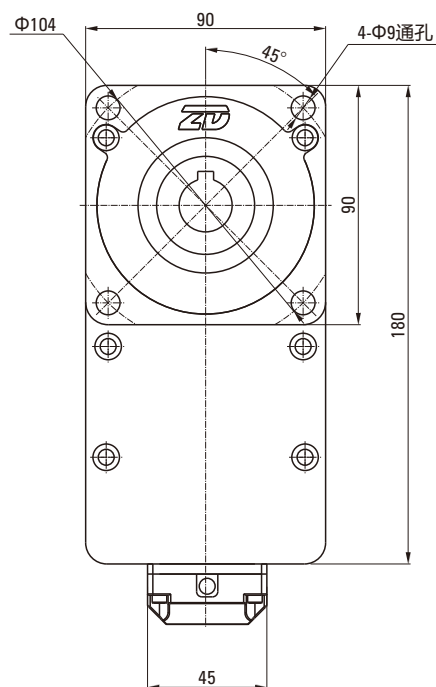
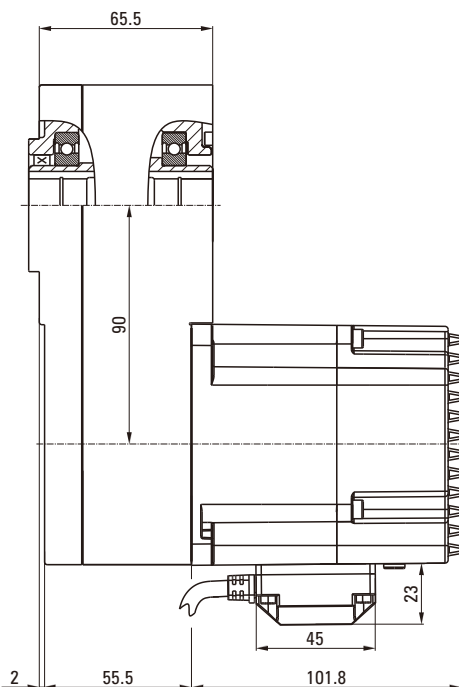
输出功率 Output power	电机转速 Motor speed	减速比 Ratio						
		5	10	15	20	30	50	100
120W	2000rpm	2.09	4.18	6.27	8.35	12.53	20.89	42.00

注Note: 表格中所有出轴旋转方向与电机转向相反。All shaft rotation directions in the table are opposite to motor steering.  
(不同转速及速比下的力矩为ZD标准驱动器下测试所得。The torque under different speed and speed ratio is obtained under the ZD standard)

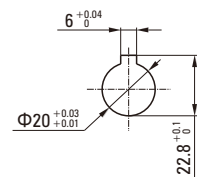
### 外形图 Dimensional drawing



线束颜色 Wire harness color	线束定义 Definition of wiring harness	接线说明 Wiring instructions
红色 Red	L	DIR接L正转 DIR connected to L in forward rotation DIR接N反转 DIR to N inversion
蓝色 Blue	N	
白色 White	DIR	
黄绿双色 Yellow green dual color	PE	



### 输出轴结构 Output shaft structure



# L2系列直流无刷减速电机 (200W)

## L2 SERIES GEAR MOTOR (200W)

### 命名 Name

- 平行轴减速机 Parallel shaft reducer

型号 Model number	电机型号 Motor type	减速器型号 Type of reducer	减速比 Ratio
Z6BLDY200-220GKL-20S-Q/6GU□L2	Z6BLDY200-220GKL-20S-Q	6GU□L2	5 ~ 100

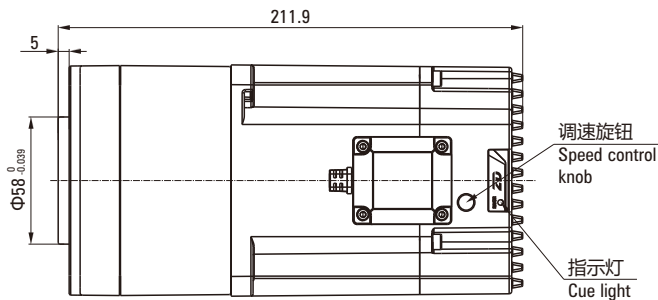
### 容许力矩 Allowable torque

单位 Unit: N·m

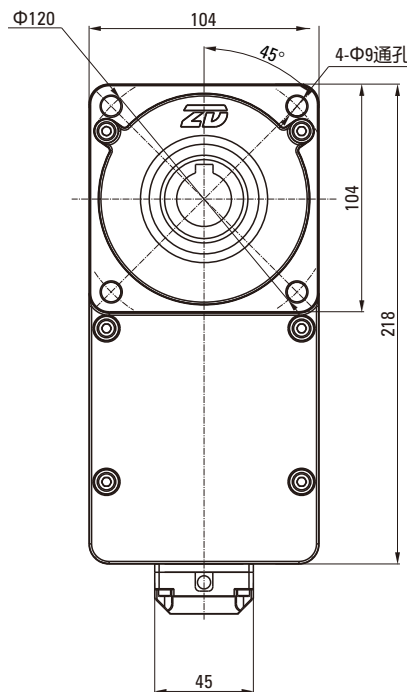
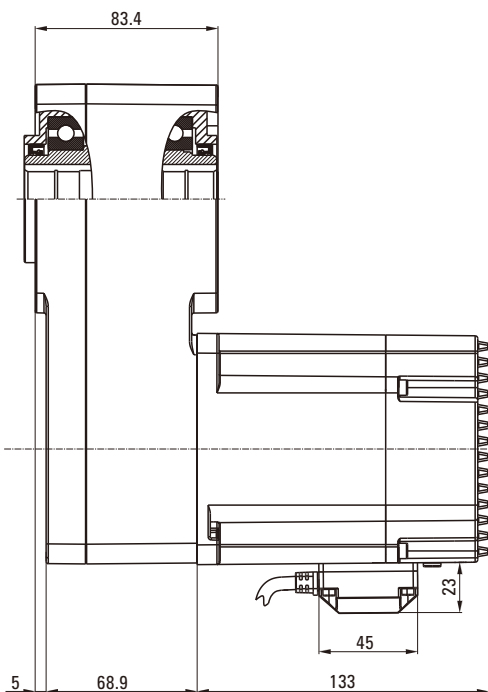
输出功率 Output power	电机转速 Motor speed	减速比 Ratio							
		5	10	15	20	30	50	100	
200W	2000rpm	3.48	6.96	10.44	13.92	20.89	34.81	70.00	

注Note：表格中所有出轴旋转方向与电机转向相反。All shaft rotation directions in the table are opposite to motor steering.  
(不同转速及速比下的力矩为ZD标准驱动器下测试所得。The torque under different speed and speed ratio is obtained under the ZD standard)

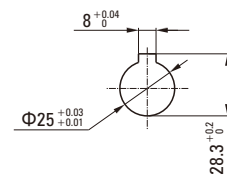
### 外形图 Dimensional drawing



线束颜色 Wire harness color	线束定义 Definition of wiring harness	接线说明 Wiring instructions
红色 Red	L	DIR接L正转 DIR connected to L in forward rotation
蓝色 Blue	N	
白色 White	DIR	
黄绿双色 Yellow green dual color	PE	DIR接N反转 DIR to N inversion



### 输出轴结构 Output shaft structure



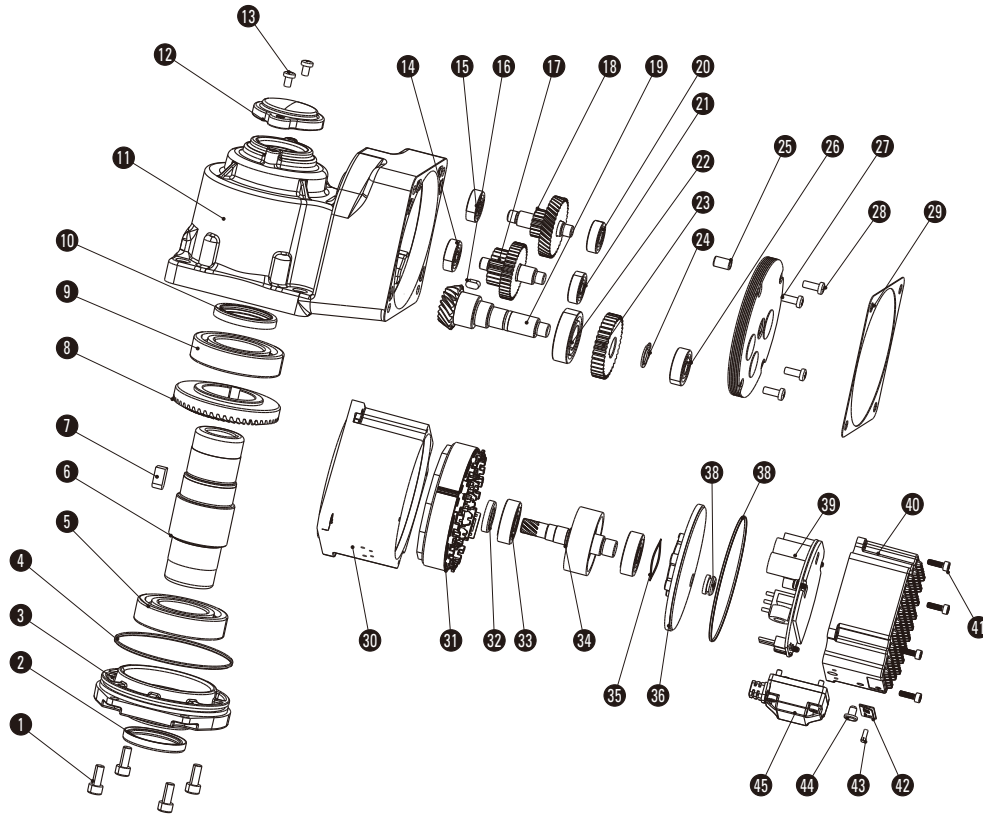
## 型号阅读方法 PRODUCT CODE

### RC2系列电机 RC2-series

Z5
BLDY
120
-
220
GKR
-
20S
-
Q
/
5GU
50RC2

①	机座号：80×80 (Z4-80×80/Z5-90×90/Z6-104×104)	Size: 80×80 (Z4-80×80/Z5-90×90/Z6-104×104)
②	电机类型：一体式无刷	Motor type: Brushless one-piece
③	功率：120W	Power: 120W
④	电压：220VAC	Voltage: 220VAC
⑤	减速器类型：GKR (RC2系列减速器)	Type of reducer: GKR (RC2-series reducer)
⑥	转速：2000rpm	Speed: 2000rpm
⑦	减速器机座：80 (4GN-80×80/5GU-90×90/6GU-104×104)	Reducer size: 80 (4GN-80×80/5GU-90×90/6GU-104×104)
⑧	速比：50	Ratio: 50

### 产品爆炸图 Product explosion diagram



### 明细表 Parts list

1: 内六角圆柱头螺钉 Hexagon socket head screws	10: 油封 Oil seal	19: 四级主动齿轮轴 Four-stage drive gear shaft	30: 机壳 Shell	39: 驱动板组件 Drive board assembly
2: 油封 Oil seal	11: 箱体 Box body	23: 三级从动齿轮 Triple slave	31: 嵌线定子 Stator core	40: 驱动器罩 Drive cover
3: 输出箱盖 Output box cover	12: 后端盖 Back cover	24: C挡圈 Snap ring	32: 油封 Oil seal	41: 内六角圆柱头螺钉 Hexagon socket head screws
4: O型圈 O-ring	13: 十字槽元机螺钉 Cross recessed machine screws	25: 定位销 Locating pin	33: 轴承 Bearing	42: 面贴 Surface mount
5: 轴承 Bearing	14/15: 轴承 Bearing	26: 轴承 Bearing	34: 转子 Rotating shaft	43: 导光柱 Light guide
6: 输出轴 Output shaft	16: 键 Keys	27: 箱盖 Box cover	35: 波形弹性垫圈 Corrugated spring washer	44: 橡胶塞 Rubber stopper
7: 键 Keys	17: 三级传动轴 3rd follower	28: 十字槽元机螺钉 Cross recessed machine screws	36: 后端盖 Back cover	45: 接线盒组件 Wiring box assembly
8: 输出齿轮 Output slave	18: 二级传动轴 2nd follower	29: 密封垫片 Sealing washer	37: 护线圈 Wire grommet	
9: 轴承 Bearing	20/21/22: 轴承 Bearing		38: O型圈 O-ring	

# RC2系列直流无刷减速电机 (40W)

## RC2 SERIES GEAR MOTOR (40W)

### 命名 Name

- 弧锥直角减速电机 Arc cone right angle reduction motor

型号 Model number	电机型号 Motor type	减速器型号 Type of reducer	减速比 Ratio
Z4BLDY40-22GKR-20S-Q/4GN□RC2	Z4BLDY40-22GKR-20S-Q	4GN□RC2	5 ~ 100

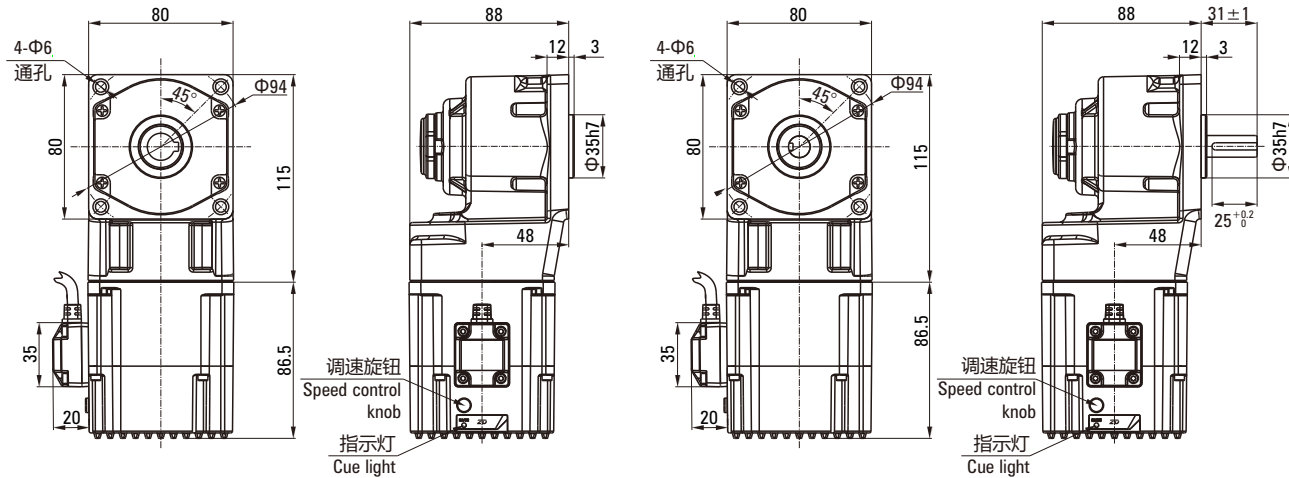
### 容许力矩 Allowable torque

单位 Unit: N·m

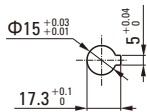
输出功率 Output power	电机转速 Motor speed	减速比 Ratio						
		5	10	15	20	30	50	100
40W	2000rpm	0.63	1.55	2.32	3.10	4.18	6.97	12.00

注Note: □色表示与电动机的旋转方向为同方向。其他则为相反方向。  
The color represents the same direction as the rotation direction of the motor. Others are in the opposite direction.

### 外形图 Dimensional drawing

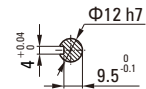


### 输出轴结构 Output shaft structure



线束颜色 Wire harness color	线束定义 Definition of wiring harness	接线说明 Wiring instructions
红色 Red	L	DIR接L正转 DIR connected to L in forward rotation
蓝色 Blue	N	
白色 White	DIR	
黄绿双色 Yellow green dual color	PE	DIR接N反转 DIR to N inversion

### 输出轴结构 Output shaft structure



# RC2系列直流无刷减速电机 (120W)

## RC2 SERIES GEAR MOTOR (120W)

### 命名 Name

- 弧锥直角减速电机 Arc cone right angle reduction motor

型号 Model number	电机型号 Motor type	减速器型号 Type of reducer	减速比 Ratio
Z5BLDY120-220GKR-20S-Q/5GU□RC2	Z5BLDY120-220GKR-20S-Q	5GU□RC2	5 ~ 100

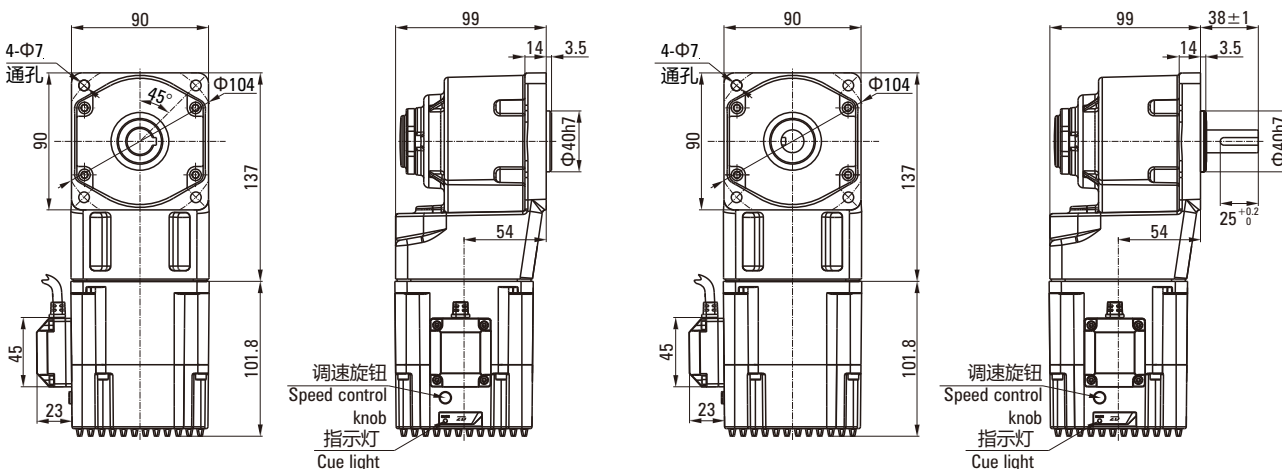
### 容许力矩 Allowable torque

单位 Unit: N·m

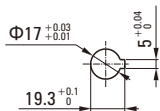
输出功率 Output power	电机转速 Motor speed	减速比 Ratio						
		5	10	15	20	30	50	100
120W	2000rpm	1.88	4.18	6.27	8.37	12.55	18.82	30.00

注Note: □色表示与电动机的旋转方向为同方向。其他则为相反方向。  
The color represents the same direction as the rotation direction of the motor. Others are in the opposite direction.

### 外形图 Dimensional drawing

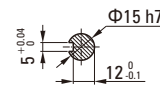


### 输出轴结构 Output shaft structure



线束颜色 Wire harness color	线束定义 Definition of wiring harness	接线说明 Wiring instructions
红色 Red	L	DIR接L正转 DIR connected to L in forward rotation DIR接N反转 DIR to N inversion
蓝色 Blue	N	
白色 White	DIR	
黄绿双色 Yellow green dual color	PE	

### 输出轴结构 Output shaft structure



# RC2系列直流无刷减速电机 (200W)

## RC2 SERIES GEAR MOTOR (200W)

### 命名 Name

- 弧锥直角减速电机 Arc cone right angle reduction motor

型号 Model number	电机型号 Motor type	减速器型号 Type of reducer	减速比 Ratio
Z6BLDY200-220GKR-20S-Q/6GU□RC2	Z6BLDY200-220GKR-20S-Q	6GU□RC2	5 ~ 100

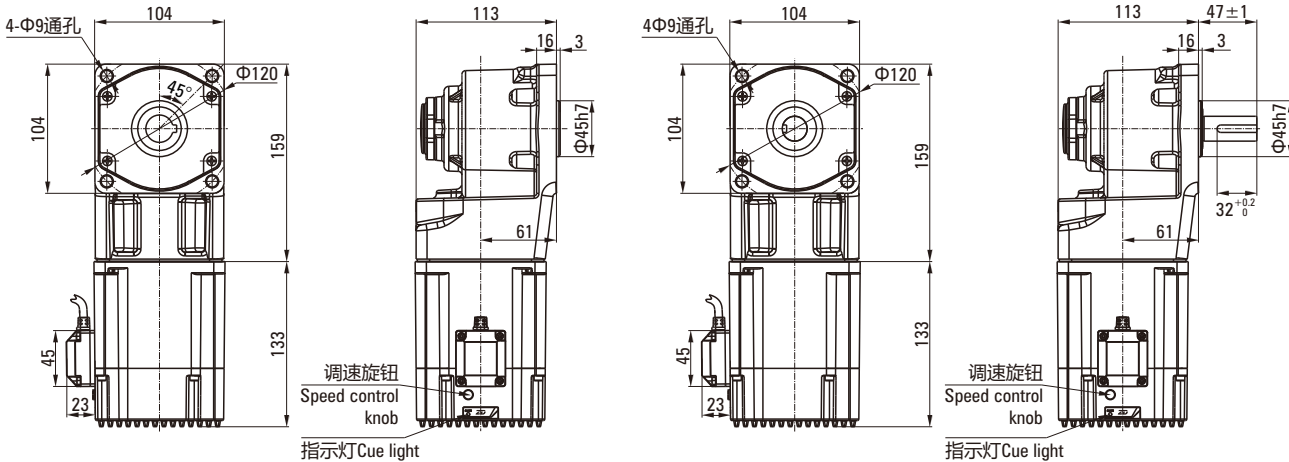
### 容许力矩 Allowable torque

单位 Unit: N·m

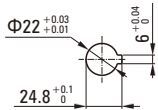
输出功率 Output power	电机转速 Motor speed	减速比 Ratio						
		5	10	15	20	30	50	100
200W	2000rpm	3.13	6.97	10.45	13.94	20.91	31.37	60.0

注Note: □色表示与电动机的旋转方向为同方向。其他则为相反方向。  
The color represents the same direction as the rotation direction of the motor. Others are in the opposite direction.

### 外形图 Dimensional drawing



### 输出轴结构 Output shaft structure



线束颜色 Wire harness color	线束定义 Definition of wiring harness	接线说明 Wiring instructions
红色 Red	L	DIR接L正转 DIR connected to L in forward rotation DIR接N反转 DIR to N inversion
蓝色 Blue	N	
白色 White	DIR	
黄绿双色 Yellow green dual color	PE	

### 输出轴结构 Output shaft structure

