

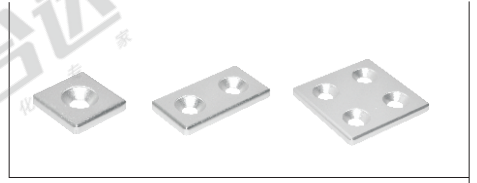
欧标40槽宽8.2系列型材用配件-附件部分

◀ 装饰类

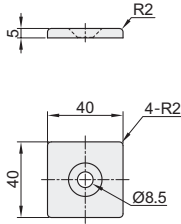
☑ 铝合金端盖

| 代码 | 类型 | 材质 | 表面处理 |
|-----------|-------|----------|--------|
| ARC01-408 | 铝合金端盖 | A6063-T5 | 喷砂氧化 |
| ARC03-408 | | | 黑色阳极氧化 |

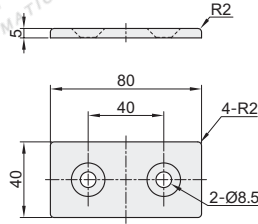
① 用于型材截面处，防尘，美观大方，连接牢固。



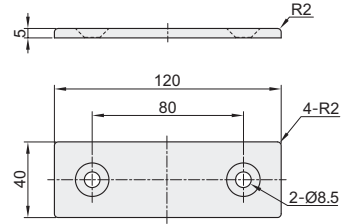
ARC01-408-4040
ARC03-408-4040



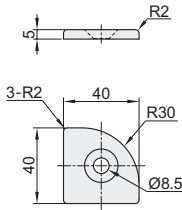
ARC01-408-4080
ARC03-408-4080



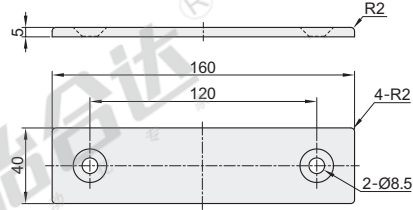
ARC01-408-40120
ARC03-408-40120



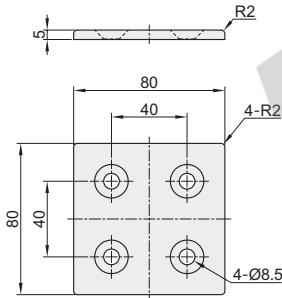
ARC01-408-4040R
ARC03-408-4040R
(只适合怡合达型材)



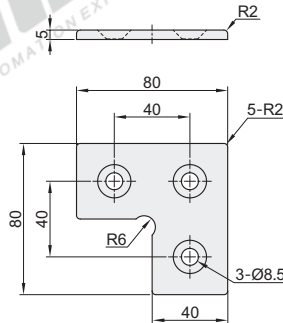
ARC01-408-40160
ARC03-408-40160



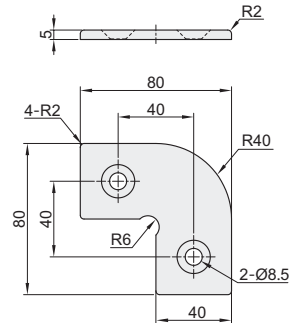
ARC01-408-8080
ARC03-408-8080



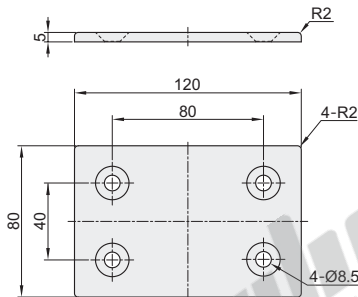
ARC01-408-8840
ARC03-408-8840



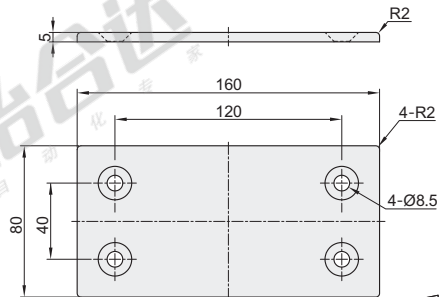
ARC01-408-8840R
ARC03-408-8840R



ARC01-408-80120
ARC03-408-80120



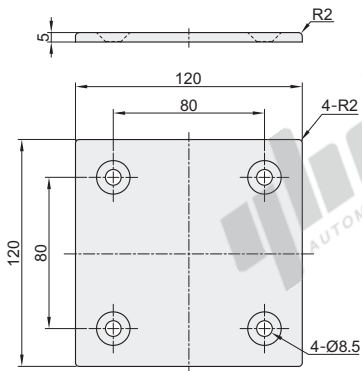
ARC01-408-80160
ARC03-408-80160



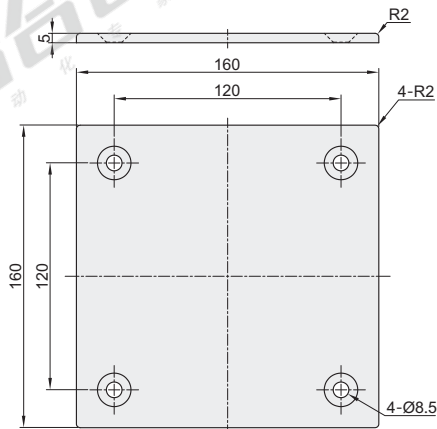
视角标准：第一视角

槽宽
8.2系列
欧标
40

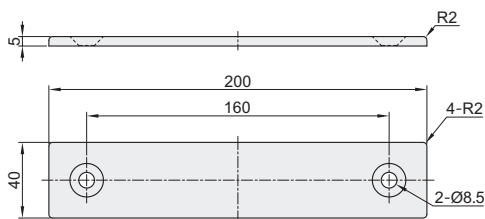
ARC01-408-120120
ARC03-408-120120



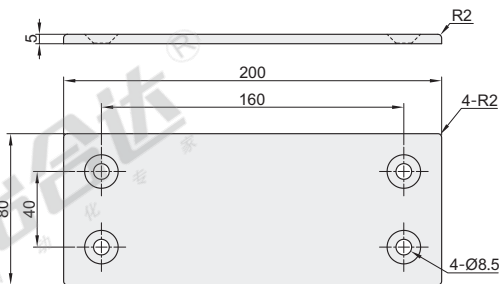
ARC01-408-160160
ARC03-408-160160



ARC01-408-40200
ARC03-408-40200



ARC01-408-80200
ARC03-408-80200



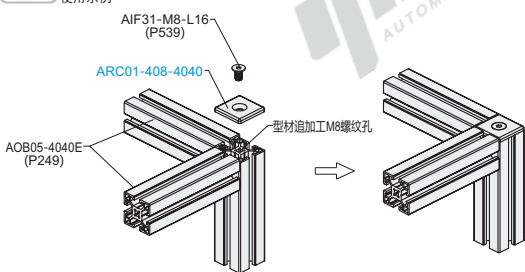
视图标准：第一视角

EX

Example
使用示例

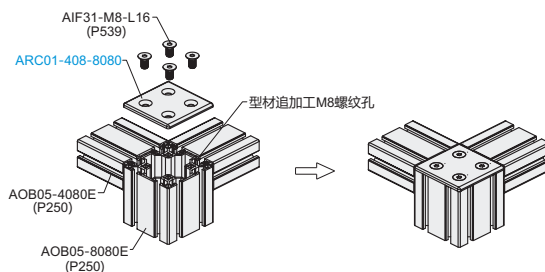
分解图

组装图



分解图

组装图



槽宽
8.2系列
欧标
40

| 型号 | | 重量 (g/pcs) | 适用型材 | | | | | | | 备注 | | |
|------------------|------------------|---------------|--------|-------|--------|---------|--------|--------|-------|-------|--------|---|
| 代码 | | | AOB03 | AOB05 | | | | | | | | |
| ARC01-408-4040 | ARC03-408-4040 | 19.6 | 4040E | 4040 | 4040C | 4040E | 4040F | 4040J | 4040A | 4040B | 4040HC | 铝合金端盖配合 AIF31-M8-L16使用 (型材螺纹孔口倒角C1.0) |
| ARC01-408-4040R | ARC03-408-4040R | 17.4 | 4040RE | 4040R | 4040RE | | | | | | | |
| ARC01-408-4080 | ARC03-408-4080 | 40 | 4080E | 4080 | 4080C | 4080E | 4080F | 4080J | 4080A | 4080B | | |
| ARC01-408-40120 | ARC03-408-40120 | 61.1 | | | | 40120E | | | | | | |
| ARC01-408-40160 | ARC03-408-40160 | 82.8 | | | | 40160E | | | | | | |
| ARC01-408-40200 | ARC03-408-40200 | 104.5 | | | | 40200E | | | | | | |
| ARC01-408-8080 | ARC03-408-8080 | 79.4 | 8080E | 8080 | 8080E | 8080J | 8080A | 8080F | | | | |
| ARC01-408-8840 | ARC03-408-8840 | 58.7 | | | | 8840 | | | | | | |
| ARC01-408-8840R | ARC03-408-8840R | 56.5 | | | | 8840R | 8840RE | 8840RF | | | | |
| ARC01-408-80120 | ARC03-408-80120 | 122.9 | | | | 80120E | | | | | | |
| ARC01-408-80160 | ARC03-408-80160 | 166.3 | | | | 80160E | | | | | | |
| ARC01-408-80200 | ARC03-408-80200 | 209.9 | | | | 80200E | | | | | | |
| ARC01-408-120120 | ARC03-408-120120 | 188.2 | | | | 120120E | | | | | | |
| ARC01-408-160160 | ARC03-408-160160 | 340.8 | | | | 160160E | | | | | | |

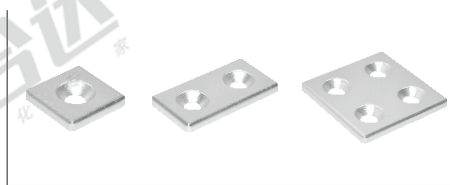
请按图示订货

型号
ARC01-408-4040
ARC01-408-4040R

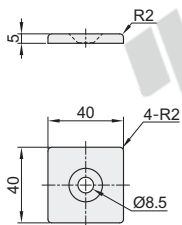
铝合金端盖

| 代码 | 类型 | 材质 | 表面处理 |
|------------|-------|----------|--------|
| ARC01-408 | 铝合金端盖 | A6063-T5 | 喷砂氧化 |
| ARC01-4010 | | | |
| ARC03-408 | | | 黑色阳极氧化 |
| ARC03-4010 | | | |

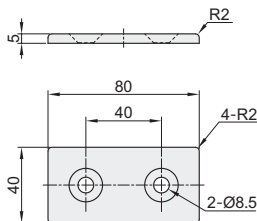
用于型材截面处，起防尘，美观，连接牢固。



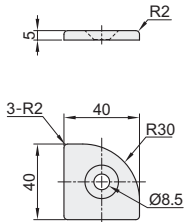
ARC01-408-4040
ARC03-408-4040



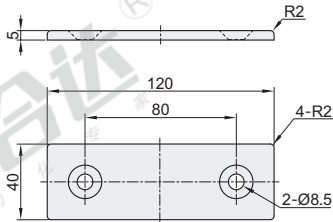
ARC01-408-4080
ARC03-408-4080



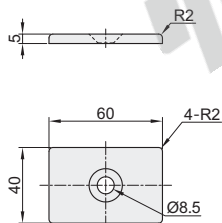
ARC01-408-4040R
ARC03-408-4040R
(只适合怡合达型材)



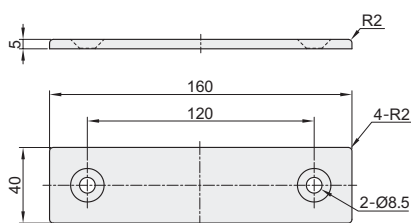
ARC01-408-40120
ARC03-408-40120



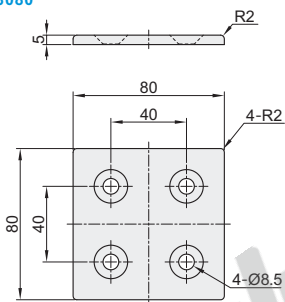
ARC01-4010-4060
ARC03-4010-4060



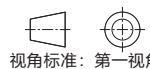
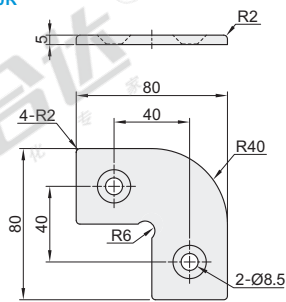
ARC01-408-40160
ARC03-408-40160



ARC01-408-8080
ARC03-408-8080



ARC01-408-8840R
ARC03-408-8840R

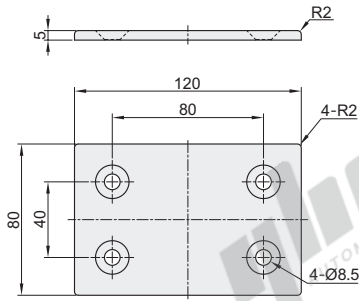


视角标准：第一视角

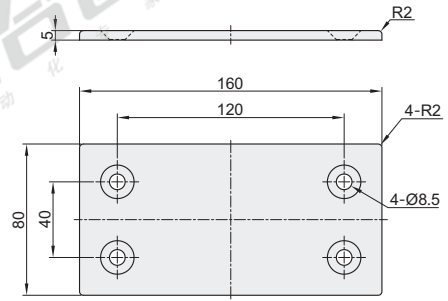
欧标40槽宽10.2系列型材用配件-附件部分

装饰类

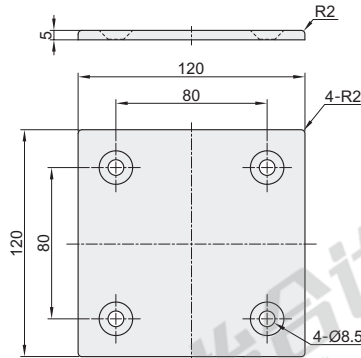
ARC01-408-80120
ARC03-408-80120



ARC01-408-80160
ARC03-408-80160



ARC01-408-120120
ARC03-408-120120



视角标准：第一视角

EX

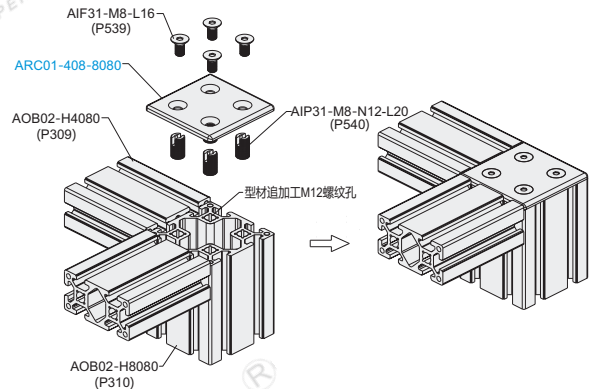
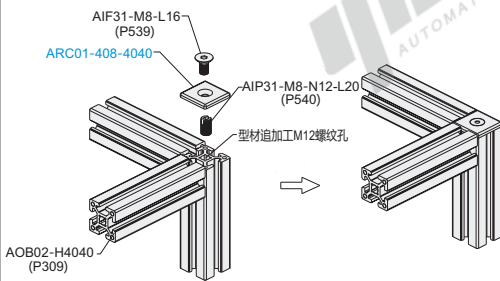
Example
使用示例

分解图

组装图

分解图

组装图



槽宽10.2系列
欧标40

| 型号 代码 | 重量 (g/pcs) | 适用型材 AOB02 | 备注 |
|------------------|---------------|---|---|
| ARC01-408-4040 | 19.7 | H4040, H4040A, H4040B, H4040C, H4040E, H4040F | 铝合金端盖 配合螺钉 AIF31-M8-L16 与相应螺纹套使用 (型材螺纹孔口倒角C1.0) |
| ARC01-408-4040R | 17.4 | H4040R | |
| ARC01-4010-4060 | 30.5 | H4060 | |
| ARC01-408-4080 | 39.5 | H4080, H4080C | |
| ARC01-408-40120 | 61 | H40120C | |
| ARC01-408-40160 | 82.8 | H40160C | |
| ARC01-408-8080 | 79.4 | H8080 | |
| ARC01-408-8840R | 56.5 | H8840R | |
| ARC01-408-80120 | 122.9 | H80120 | |
| ARC01-408-80160 | 166.7 | H80160 | |
| ARC01-408-120120 | 188.2 | H120120 | |



型号

ARC01-408-80120
ARC01-408-80160

请按图示订货

国标40槽宽8.3系列型材用配件-附件部分

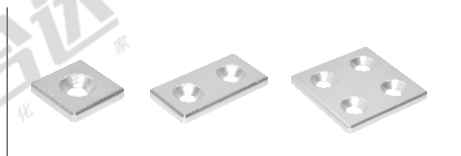
装饰类

国标40系列

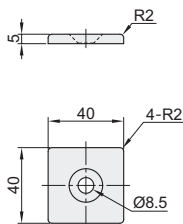
铝合金端盖

| 代码 | 类型 | 材质 | 表面处理 |
|-----------|-------|----------|--------|
| ARC01-408 | 铝合金端盖 | A6063-T5 | 喷砂氧化 |
| ARC03-408 | | | 黑色阳极氧化 |

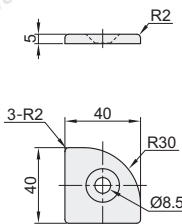
① 用于型材截面处，防尘美观、连接牢固。



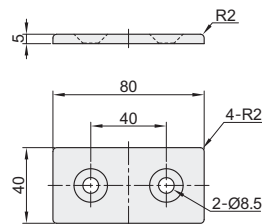
ARC01-408-4040
ARC03-408-4040



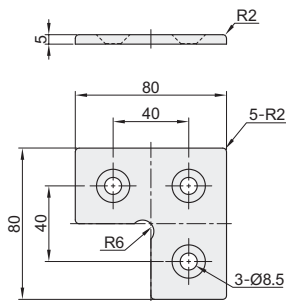
ARC01-408-4040R
ARC03-408-4040R
(只适合怡合达型材)



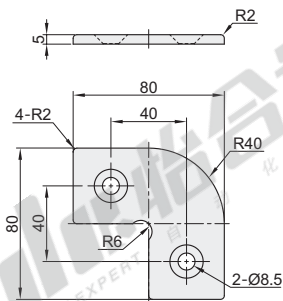
ARC01-408-4080
ARC03-408-4080



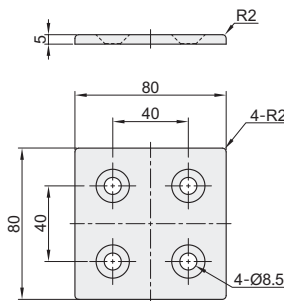
ARC01-408-8840
ARC03-408-8840



ARC01-408-8840R
ARC03-408-8840R



ARC01-408-8080
ARC03-408-8080



EX

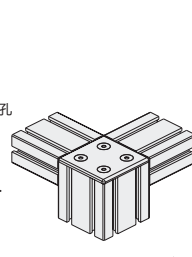
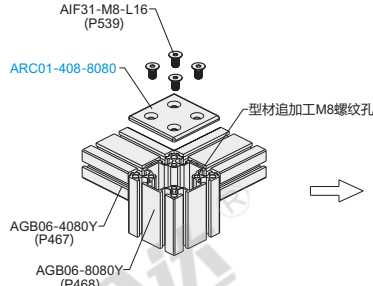
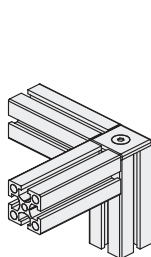
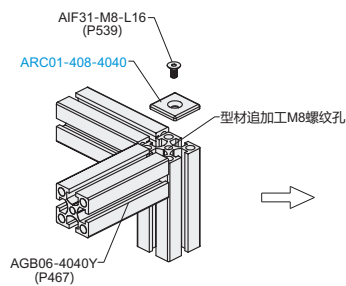
Example
使用示例

分解图

组装图

分解图

组装图



视角标准：第一视角

| 型号 代码 | | 重量 (g/pcs) | 适用型材 AGB06 | 备注 |
|-----------------|-----------------|---------------|--|---|
| ARC01-408-4040 | ARC03-408-4040 | 19.6 | 4040、4040A、4040YC、4040YA 4040Y、4040YD、4040YB、4040HC | 铝合金端盖配合螺栓 AIF31-M8-L16使用 (型材螺纹孔口倒角C1.0) |
| ARC01-408-4040R | ARC03-408-4040R | 17.4 | 4040R | |
| ARC01-408-4080 | ARC03-408-4080 | 39.5 | 4080、4080A、4080Y、4080YA、4080YC | |
| ARC01-408-8840 | ARC03-408-8840 | 58.7 | 8840Y | |
| ARC01-408-8840R | ARC03-408-8840R | 56.5 | 8840R | |
| ARC01-408-8080 | ARC03-408-8080 | 79.4 | 8080、8080Y | |



请按图示订货

型号
ARC01-408-4040
ARC01-408-4040R
ARC01-408-4080