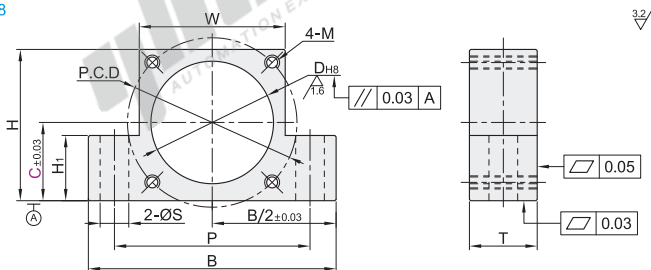


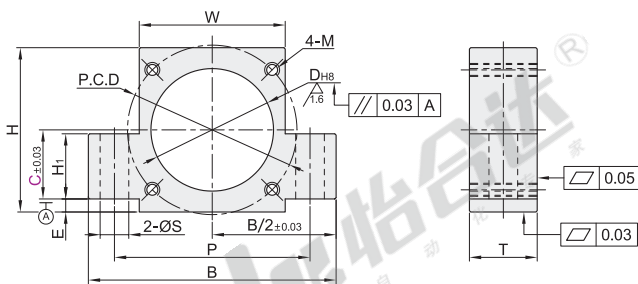
| 代码    | 类型     |       | 材质     | 表面处理   |
|-------|--------|-------|--------|--------|
| LAT01 | 适用伺服电机 | 高度固定型 | S45C   | 发黑     |
| LAT02 |        |       |        | 无电解镀锌  |
| LAT06 |        |       | SUS304 | —      |
| LAT08 |        |       | A6061  | 本色阳极氧化 |

适用规格(E尺寸为平底型):

- LAT01/02/06/08-F38-C22/F40-C22
- LAT01/02/06/08-F38-C25/F40-C25
- LAT01/02/06/08-F60-C30/F60S-C30
- LAT01/02/06/08-F60-C34/F60S-C34
- LAT01/02/06/08-F90-C48



适用其余规格



视角标准：第一视角

滚珠丝杠  
支架组件

E4

| 代码    | 型号<br>适用电机法兰<br>F* | C   | D <sub>H8</sub> | P.C.D | M   | H  | H <sub>1</sub> | E   | W   | B     | P    | T    | ØS       | 建议丝杠支架   |          | 建议电机规格   |      |         |      |      |
|-------|--------------------|-----|-----------------|-------|-----|----|----------------|-----|-----|-------|------|------|----------|----------|----------|----------|------|---------|------|------|
|       |                    |     |                 |       |     |    |                |     |     |       |      |      |          | 固定侧      | 支撑侧      | 法兰规格     | 止口规格 | 安装P.C.D | 安装孔  |      |
| LAT01 | 38                 | 13  | 30              | 45    | M3  | 40 | 10             | 7   | 40  | 59    | 49.5 | 9.5  | 4.5      | LEB21-6  | LEB31-6  | 38       | 30   | 45      | Ø3.4 |      |
|       | 40                 |     |                 | 46    | M4  | 40 | 15             | 3   | 40  | 59    | 49.5 | 9.5  | 4.5      | LEB41-6  | LEB51-6  | 40       |      | 46      | Ø4.5 |      |
|       | 38                 | 17  | 30              | 45    | M3  | 40 | 15             | 3   | 40  | 59    | 49.5 | 9.5  | 4.5      | LEB21-8  | LEB31-8  | 38       | 30   | 45      | Ø3.4 |      |
|       |                    |     |                 | 40    | 46  | M4 | 40             | 15  | 3   | 40    | 59   | 49.5 | 9.5      | 4.5      | LEB41-8  | LEB51-8  |      | 40      | 46   | Ø4.5 |
|       | 38                 | 22  | 30              | 45    | M3  | 42 | 15             | 平底  | 40  | 59    | 49.5 | 9.5  | 4.5      | LEB61-10 | LEB71-10 | 38       | 30   | 45      | Ø3.4 |      |
|       |                    |     |                 | 40    | 46  | M4 | 40             | 15  | 平底  | 40    | 59   | 49.5 | 9.5      |          |          | 4.5      |      | 40      | 46   | Ø4.5 |
|       | 60                 | 22  | 50              | 70    | M5  | 60 | 15             | 8   | 60  | 85    | 72.5 | 12.5 | 6.6      | LEB61-10 | LEB71-10 | 60       | 50   | 70      | Ø5.5 |      |
|       | 60S                |     |                 | 70    | M4  | 60 | 15             | 8   | 60  | 85    | 72.5 | 12.5 | 6.6      |          |          | 60S      |      | 70      | Ø4.5 |      |
|       | 38                 | 25  | 30              | 45    | M3  | 45 | 15             | 平底  | 40  | 59    | 49.5 | 9.5  | 4.5      | LEB21-10 | LEB31-10 | 38       | 30   | 45      | Ø3.4 |      |
|       | 40                 |     |                 | 46    | M4  | 45 | 15             | 平底  | 40  | 59    | 49.5 | 9.5  | 4.5      | LEB41-10 | LEB51-10 | 40       |      | 46      | Ø4.5 |      |
|       | 60                 | 25  | 50              | 70    | M5  | 60 | 20             | 5   | 60  | 85    | 72.5 | 12.5 | 6.6      | LEB21-12 | LEB31-12 | 60       | 50   | 70      | Ø5.5 |      |
|       |                    |     |                 | 60S   | 70  | M4 | 60             | 20  | 5   | 60    | 85   | 72.5 | 12.5     |          |          | 6.6      |      | 60S     | 70   | Ø4.5 |
|       | 60                 | 25  | 50              | 70    | M5  | 60 | 20             | 2   | 60  | 85    | 72.5 | 12.5 | 6.6      | LEB61-15 | LEB71-15 | 60       | 50   | 70      | Ø5.5 |      |
|       | 60S                |     |                 | 70    | M4  | 60 | 20             | 2   | 60  | 85    | 72.5 | 12.5 | 6.6      |          |          | 60S      |      | 70      | Ø4.5 |      |
|       | LAT02              | 80  | 28              | 70    | 90  | M6 | 80             | 25  | 12  | 80    | 113  | 96.5 | 16.5     | 9        | LEB61-15 | LEB71-15 | 80   | 70      | 90   | Ø6.5 |
|       | LAT06              | 80S |                 |       | 90  | M5 | 80             | 25  | 12  | 80    | 113  | 96.5 | 16.5     | 9        |          |          | 80S  |         | 70   | Ø6   |
|       | LAT06              | 60  | 30              | 50    | 70  | M5 | 60             | 20  | 平底  | 60    | 85   | 72.5 | 12.5     | 6.6      | LEB21-15 | LEB31-15 | 60   | 50      | 70   | Ø5.5 |
|       |                    | 60S |                 |       | 70  | M4 | 60             | 20  | 平底  | 60    | 85   | 72.5 | 12.5     | 6.6      | LEB41-15 | LEB51-15 | 60S  |         | 70   | Ø4.5 |
|       | LAT08              | 80  | 30              | 70    | 90  | M6 | 80             | 25  | 10  | 80    | 113  | 96.5 | 16.5     | 9        | LEB21-20 | LEB31-20 | 80   | 70      | 90   | Ø6.5 |
|       |                    | 80S |                 |       | 90  | M5 | 80             | 25  | 10  | 80    | 113  | 96.5 | 16.5     | 9        | LEB41-20 | LEB51-20 | 80S  |         | 70   | Ø6   |
|       | LAT08              | 60  | 34              | 50    | 70  | M5 | 64             | 20  | 平底  | 60    | 85   | 72.5 | 12.5     | 6.6      | LEB61-20 | LEB71-20 | 60   | 50      | 70   | Ø5.5 |
|       |                    | 60S |                 |       | 70  | M4 | 64             | 20  | 平底  | 60    | 85   | 72.5 | 12.5     | 6.6      |          |          | 60S  |         | 70   | Ø4.5 |
|       | 80                 | 34  | 70              | 90    | M6  | 80 | 25             | 6   | 80  | 113   | 96.5 | 16.5 | 9        | LEB61-20 | LEB71-20 | 80       | 70   | 90      | Ø6.5 |      |
|       | 80S                |     |                 | 90    | M5  | 80 | 25             | 6   | 80  | 113   | 96.5 | 16.5 | 9        |          |          | 80S      |      | 70      | Ø6   |      |
| 90    | 35                 | 80  | 100             | M6    | 90  |    | 10             | 90  | 131 | 110.5 |      |      | LEB41-25 | LEB31-25 | 90       | 80       | 100  | Ø6.5    |      |      |
| 100   |                    |     | 100             | M8    | 90  |    | 10             | 90  | 131 | 110.5 |      |      |          |          | 100      |          | 80   | 100     | Ø9   |      |
| 100A  | 35                 | 95  | 115             | M6    | 105 | 25 | 17.5           | 105 | 146 | 125.5 | 20.5 | 11   | LEB41-25 | LEB51-25 | 100A     | 95       | 115  | Ø6.5    |      |      |
| 110   |                    |     | 130             | M8    | 110 |    | 20             | 110 | 151 | 130.5 |      |      |          |          | 110      |          | 95   | 130     | Ø9   |      |
| 90    | 48                 | 80  | 100             | M6    | 93  |    | 平底             | 90  | 131 | 110.5 |      |      | LEB61-25 | LEB71-25 | 90       | 80       | 100  | Ø6.5    |      |      |
| 100   |                    |     | 100             | M8    | 93  |    | 平底             | 90  | 131 | 110.5 |      |      |          |          | 100      |          | 80   | 100     | Ø9   |      |
| 100A  | 48                 | 95  | 115             | M6    | 105 | 25 | 4.5            | 105 | 146 | 125.5 | 20.5 | 11   | LEB61-25 | LEB71-25 | 100A     | 95       | 115  | Ø6.5    |      |      |
| 110   |                    |     | 130             | M8    | 110 |    | 7              | 110 | 151 | 130.5 |      |      |          |          | 110      |          | 95   | 130     | Ø9   |      |

① \*带S为松下电机,带A为安川电机,不带为其它品牌电机。



| 型号    |              | C  |
|-------|--------------|----|
| 代码    | 适用电机法兰<br>F* |    |
| LAT01 | 38           | 13 |
|       | 40           | 13 |

LAT01—F38—C13



| 优惠价 |           |
|-----|-----------|
| 数量  | 1~4 5~    |
| 价格  | 100% 另行报价 |

| 交货期 |   |
|-----|---|
| 数量  | 5 |