

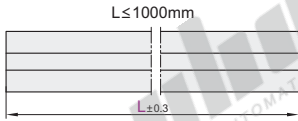
欧标45系列铝合金型材

槽宽10.2 · 槽口壁厚4.5

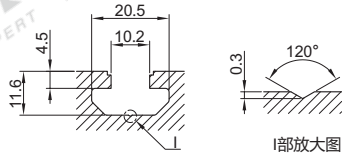
代码	材质	表面处理
AOB02	A6063-T6	碱砂氧化
AOB05	A6063-T5	喷砂氧化

- ① 切断面未进行氧化处理。
- ② 最大使用长度：5800~5850mm；
整条标准长度：6000~6020mm。
- ③ 可定制表面处理。

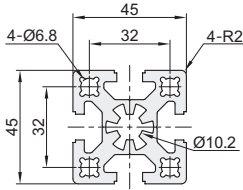
□ L长度公差



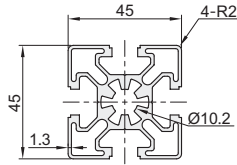
□ 槽口详图



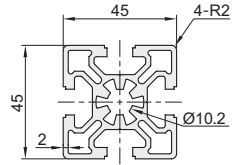
AOB02-H4545Y



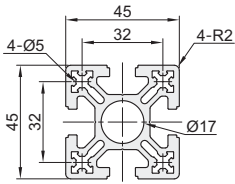
AOB02-H4545YC
AOB05-4545YC



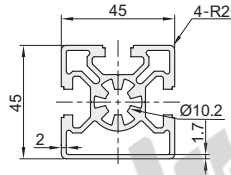
AOB02-H4545YE
AOB05-4545YE



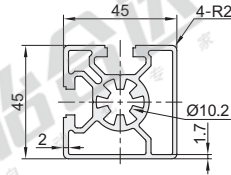
AOB05-4545YF



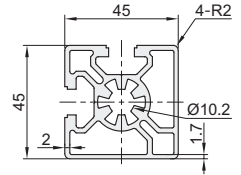
AOB02-H4545YA
AOB05-4545YA



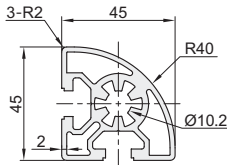
AOB02-H4545YB



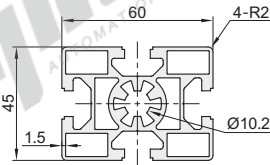
AOB05-4545YB



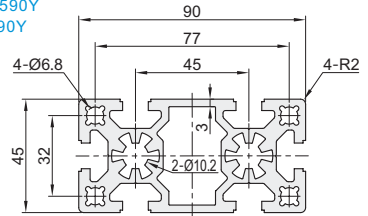
AOB02-H4545YR
AOB05-4545YR



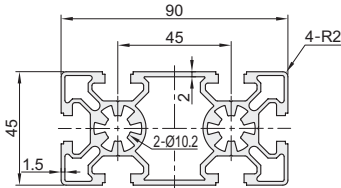
AOB02-H4560YC



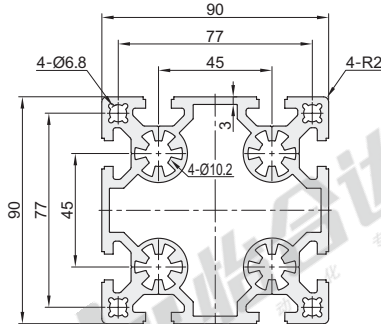
AOB02-H4590Y
AOB05-4590Y



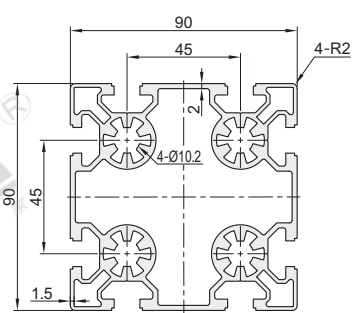
AOB02-H4590YC
AOB05-4590YC



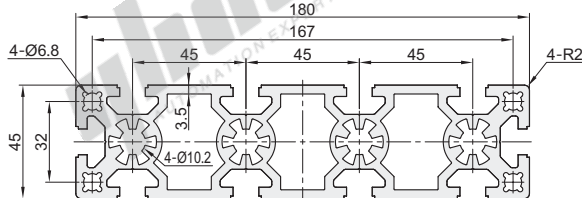
AOB02-H9090Y



AOB02-H9090YC



AOB02-H45180Y



视角标准：第一视角

型号		L 最小单位0.5	截面尺寸	每米重量Kg/m (理论值)	截面积 (mm ²)	截面惯性矩		抗弯截面模数	
代码	规格					I_x	I_y	Wxmax (mm ³)	Wymax (mm ³)
AOB02	H4545Y	50~6000	45×45	2.62	950.26	18.30×10 ⁴	18.30×10 ⁴	8134.18	8134.18
	H4545YC			1.68	610.34	10.66×10 ⁴	10.66×10 ⁴	4735.33	4735.33
	H4545YE			2.12	771.03	14.53×10 ⁴	14.53×10 ⁴	6459.16	6459.16
	H4545YA			1.96	710.71	12.98×10 ⁴	13.77×10 ⁴	5454.25	6120.13
	H4545YB			1.86	676.02	12.90×10 ⁴	12.53×10 ⁴	5537.12	5333.78
	H4545YR		1.87	677.66	10.90×10 ⁴	10.90×10 ⁴	4438.27	4438.27	
	H4590YC		45×90	3.22	1169.12	23.17×10 ⁴	91.95×10 ⁴	10296.53	20432.18
	H4590Y		4.33	1574.15	32.51×10 ⁴	131.58×10 ⁴	14449.07	29240.93	
	H9090YC		90×90	5.35	1944.50	167.04×10 ⁴	167.04×10 ⁴	37119.44	37119.44
	H9090Y		6.76	2457.07	224.16×10 ⁴	224.16×10 ⁴	49813.53	49813.53	
	H4560YC		45×60	2.50	908.89	16.43×10 ⁴	27.76×10 ⁴	7301.07	9253.80
H45180Y	45×180	8.10	2946.02	64.27×10 ⁴	917.05×10 ⁴	28565.24	101894.82		
AOB05	4545YC		45×45	1.68	610.34	10.66×10 ⁴	10.66×10 ⁴	4735.33	4735.33
	4545YE			2.12	771.03	14.53×10 ⁴	14.53×10 ⁴	6459.16	6459.16
	4545YF			2.28	826.60	17.28×10 ⁴	17.28×10 ⁴	7679.11	7679.11
	4545YA			1.96	710.71	12.98×10 ⁴	13.77×10 ⁴	5454.25	6120.13
	4545YB			1.93	701.74	13.19×10 ⁴	13.19×10 ⁴	5760.20	5760.20
	4545YR		1.87	677.66	10.79×10 ⁴	10.79×10 ⁴	4365.69	4365.69	
	4590Y		45×90	4.33	1574.15	32.51×10 ⁴	131.58×10 ⁴	14449.07	29240.93
	4590YC		3.22	1169.12	23.17×10 ⁴	91.95×10 ⁴	10296.53	20432.18	



请按图示订货

型号		L 最小单位0.5	截面尺寸
代码	规格		
AOB02	H4545Y H4645YC	50<BD00	45×45

AOB02—H4545YC—L630

可选加工

型号		L 最小单位0.5	可选加工 代码
代码	规格		
AOB02	H4545Y H4645YC	50<BD00	LM RM DM

AOB02—H4545YC—L630—RM

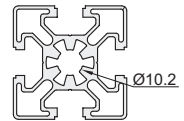


可选加工

端面螺孔加工

代码	技术说明
	变更通孔为螺孔

选型方法 LM/RM/DM
LM(左端面)
RM(右端面)
DM(双端面)



① Ø10.2通孔变更为螺孔M12深28。

② 可选加工见P603~608。