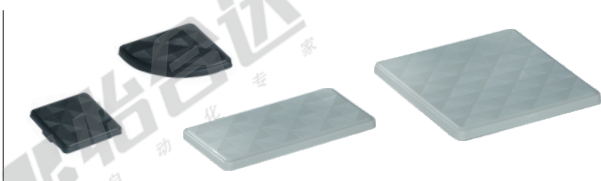


欧标40槽宽8.2系列型材用配件-附件部分

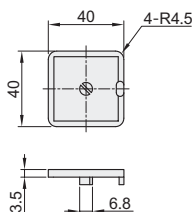
◀ 装饰类

代码	类型	材质	颜色
ARC51-408	塑胶端盖	PA	浅灰色(类似于RAL7038)
ARC52-408			黑色
ARC51-G408			浅灰色(类似于RAL7038)
ARC52-G408			黑色

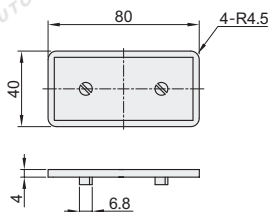


① 用于型材截面处，防尘、美观、大方。

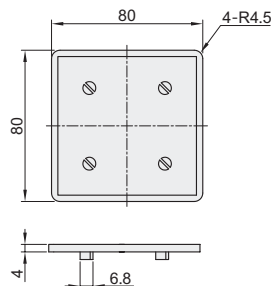
ARC51-408-4040
ARC52-408-4040



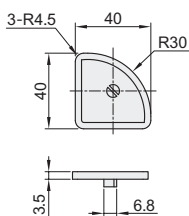
ARC51-408-8080
ARC52-408-8080



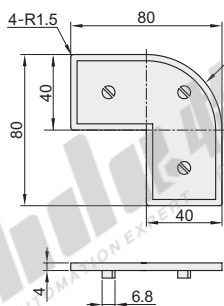
ARC51-408-8080
ARC52-408-8080



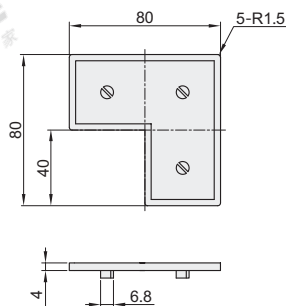
ARC51-408-4040R (只适合怡合达型材)
ARC52-408-4040R



ARC51-G408-8840R
ARC52-G408-8840R



ARC51-G408-8840Y
ARC52-G408-8840Y

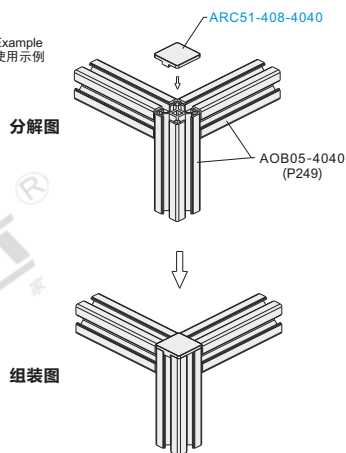


视角标准：第一视角

型号 代码	重量 (g/pcs)	适用型材	
		AOB03	AOB05
ARC51-408-4040 ARC52-408-4040	5	4040E	4040 4040B 4040F 4040A 4040C 4040E 4040J 4040HC
ARC51-408-4040R ARC52-408-4040R	4.3	4040RE	4040R 4040RE
ARC51-408-8080 ARC52-408-8080	12.5	4080E	4080 4080A 4080B 4080C 4080E 4080J 4080F
ARC51-G408-8840R ARC52-G408-8840R	16.7	—	8840R 8840RE 8840RF
ARC51-408-8080 ARC52-408-8080	23	8080E	8080 8080E 8080J 8080A 8080F
ARC51-G408-8840Y ARC52-G408-8840Y	17.3	—	8840

EX

Example
使用示例



请按图示订货

型号
ARC51-408-4040
ARC51-408-4040R
ARC51-408-4080

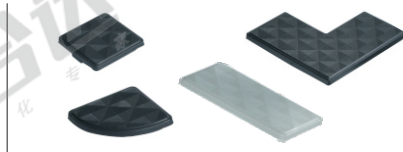
怡合达
AUTOMATION EXPERT
自动化专家

槽宽
8.2系列
欧标
40

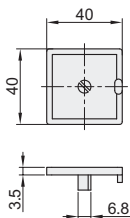
☑ 塑胶端盖

代码	类型	材质	颜色
ARC51-G408	塑胶端盖	PA	浅灰色(类似于RAL7038)
ARC52-G408			黑色

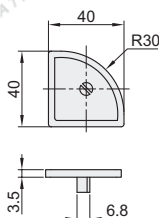
① 用于型材端面处，防尘美观。



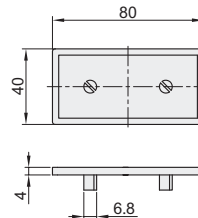
ARC51-G408-4040
ARC52-G408-4040



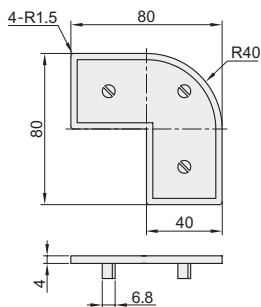
ARC51-G408-4040R (只适合怡合达型材)
ARC52-G408-4040R



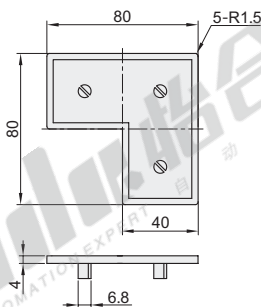
ARC51-G408-4080
ARC52-G408-4080



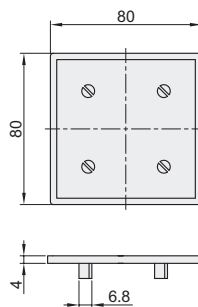
ARC51-G408-8840R
ARC52-G408-8840R



ARC51-G408-8840Y
ARC52-G408-8840Y



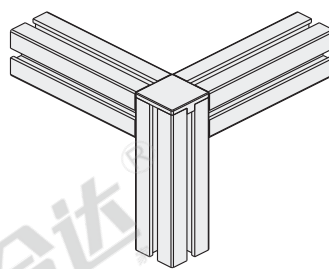
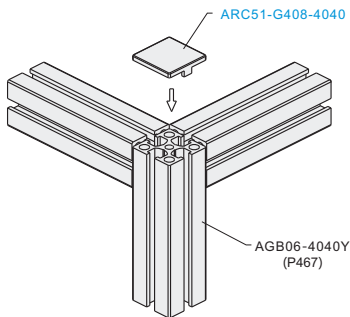
ARC51-G408-8080
ARC52-G408-8080



EX Example 使用示例

分解图

组装图



视角标准：第一视角

型号 代码	重量 (g/pcs)	适用型材 AGB06
ARC51-G408-4040 ARC52-G408-4040	5.2	4040, 4040A, 4040YB, 4040YC 4040Y, 4040YA, 4040YD, 4040HC
ARC51-G408-4040R ARC52-G408-4040R	4.6	4040R
ARC51-G408-4080 ARC52-G408-4080	12.6	4080 4080Y 4080A 4080YA 4080YC
ARC51-G408-8840R ARC52-G408-8840R	16.7	8840R
ARC51-G408-8840Y ARC52-G408-8840Y	17.3	8840Y
ARC51-G408-8080 ARC52-G408-8080	24.1	8080Y 8080



请按图示订货

型号

ARC51-G408-4040
ARC51-G408-4040R
ARC51-G408-4080