

# 欧标30系列铝合金型材

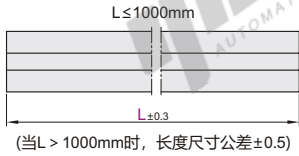
◀ 槽宽8.2 · 边长30mm

代码	材质	表面处理
AOB02	A6063-T6	碱砂氧化
AOH02	A6005-T6	
AOB03	A6063-T5	黑色氧化
AOB05		喷砂氧化

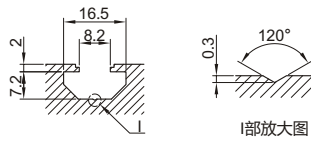
- ① 切断面未进行氧化处理。
- ② 最大使用长度：5800~5850mm；  
整条标准长度：6000~6020mm。
- ③ 可定制表面处理。



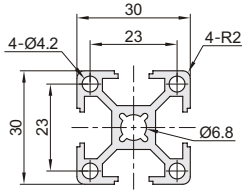
● L长度公差



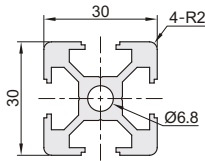
● 槽口详图



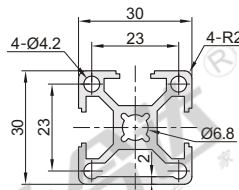
AOB02-H3030  
AOB03-3030  
AOB05-3030



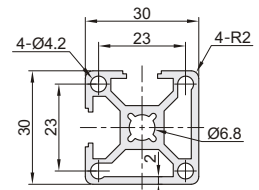
AOH02-3030



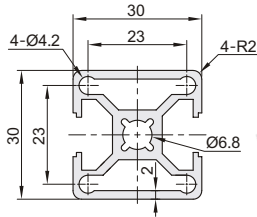
AOB02-H3030A  
AOB03-3030A  
AOB05-3030A



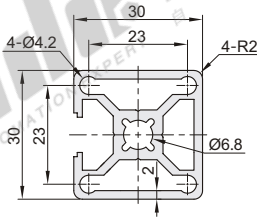
AOB02-H3030B  
AOB03-3030B  
AOB05-3030B



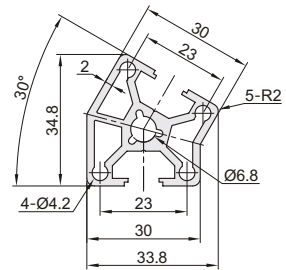
AOB05-3030H



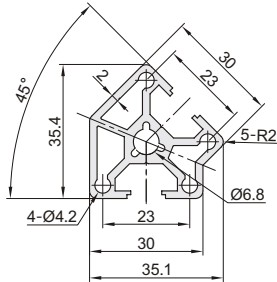
AOB05-3030T



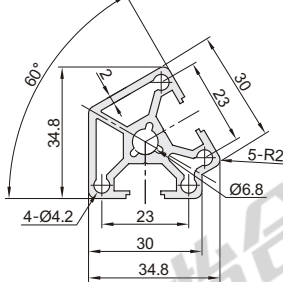
AOB05-3330



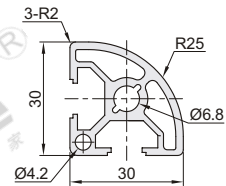
AOB05-3345



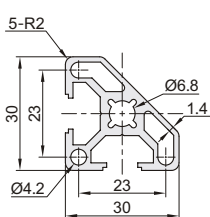
AOB05-3360



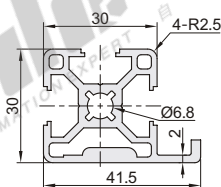
AOB02-H3030R  
AOB03-3030R  
AOB05-3030R



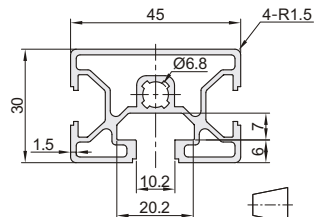
AOB05-3030X



AOB05-3042F

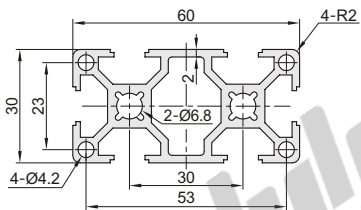


AOB02-H3045M

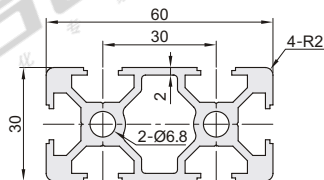


视角标准：第一视角

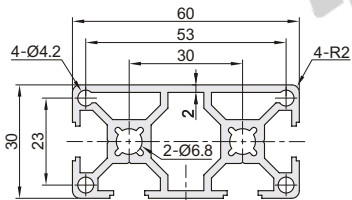
AOB02-H3060  
AOB03-3060  
AOB05-3060



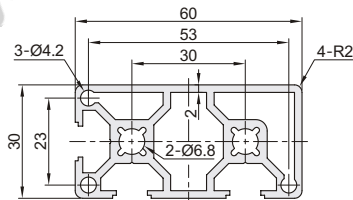
AOH02-3060



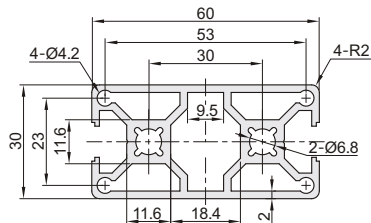
AOB05-3060A



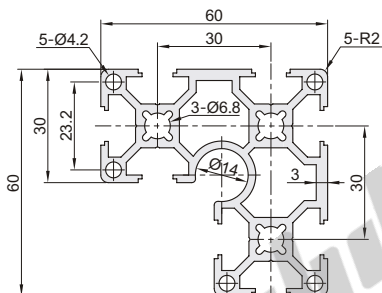
AOB05-3060B



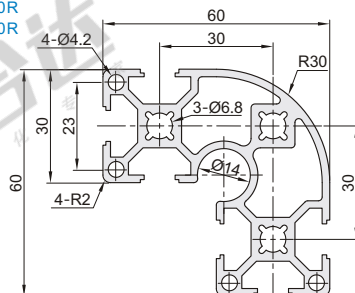
AOB05-3060H



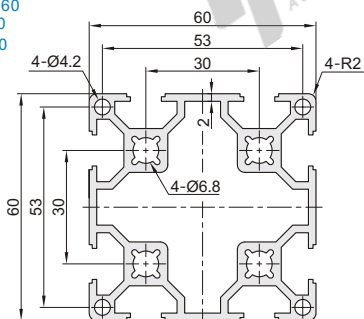
AOB05-6630



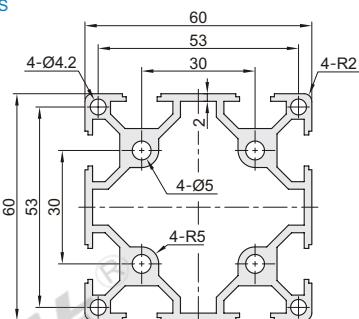
AOB02-H6630R  
AOB03-6630R  
AOB05-6630R



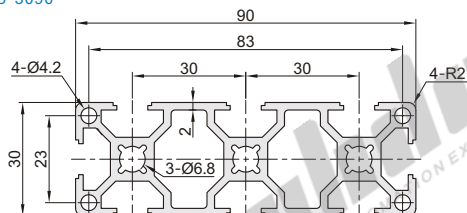
AOB02-H6060  
AOB03-6060  
AOB05-6060



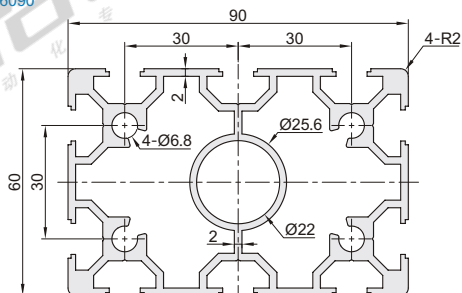
AOB05-6060S



AOB02-H3090  
AOB05-3090



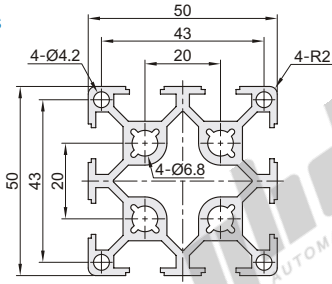
AOB05-6090



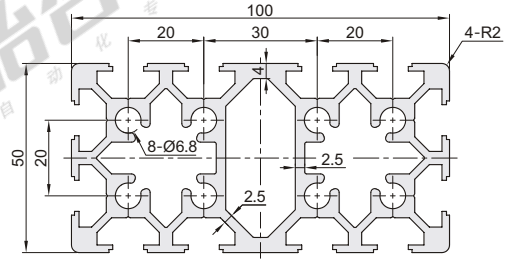
# 欧标30系列铝合金型材

◀ 槽宽8.2 · 边长50/100/120/150mm

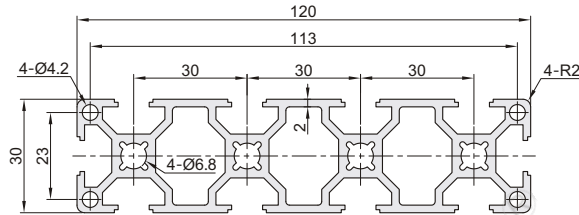
AOB02-H5050S  
AOB03-5050S  
AOB05-5050S



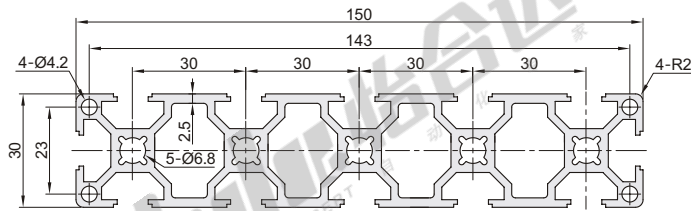
AOB03-50100S  
AOB05-50100S



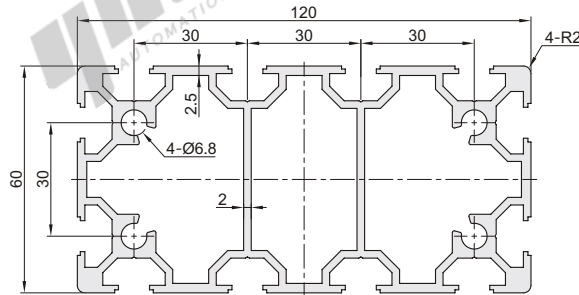
AOB02-H30120  
AOB05-30120



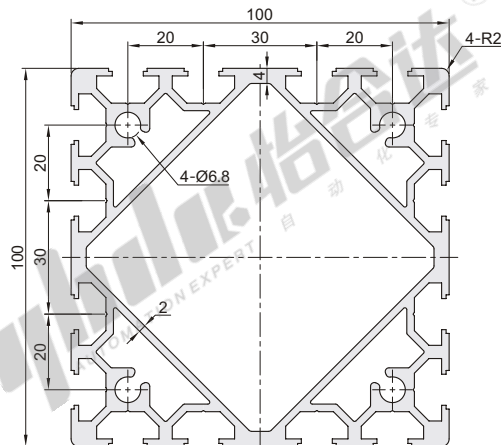
AOB05-30150



AOB05-60120



AOB05-100100S



型号 代码	规格	L 最小单位0.5	截面尺寸	每米重量Kg/m (理论值)	截面积 (mm <sup>2</sup> )	截面惯性矩		抗弯截面模数	
						Ix	Iy	Wxmax(mm <sup>3</sup> )	Wymax(mm <sup>3</sup> )
AOB02	H3030		30×30	0.85	308.56	2.74×10 <sup>4</sup>	2.74×10 <sup>4</sup>	1827.53	1827.53
	H3030A			0.87	315.73	2.96×10 <sup>4</sup>	2.67×10 <sup>4</sup>	1918.28	1776.67
	H3030B			0.92	333.73	2.98×10 <sup>4</sup>	2.98×10 <sup>4</sup>	1895.81	1895.81
	H3030R			0.81	293.64	2.34×10 <sup>4</sup>	2.34×10 <sup>4</sup>	1474.11	1474.12
	H3045M		30×45	1.06	382.75	3.77×10 <sup>4</sup>	7.60×10 <sup>4</sup>	2458.03	3377.78
	H3060		30×60	1.53	555.89	5.14×10 <sup>4</sup>	19.37×10 <sup>4</sup>	3428.80	6456.60
	H6630R		60×60	2.12	770.90	23.51×10 <sup>4</sup>	23.51×10 <sup>4</sup>	6954.86	6954.86
	H6060			2.44	887.52	34.88×10 <sup>4</sup>	34.88×10 <sup>4</sup>	11627.90	11627.90
	H3090		30×90	2.21	803.23	7.55×10 <sup>4</sup>	61.01×10 <sup>4</sup>	5030.07	13558.53
	H30120		30×120	2.89	1050.56	9.95×10 <sup>4</sup>	138.80×10 <sup>4</sup>	6631.27	23133.70
AOH02	H5050S		50×50	2.15	782.51	18.51×10 <sup>4</sup>	18.51×10 <sup>4</sup>	7404.08	7404.08
	3030		30×30	1.02	372.15	3.49×10 <sup>4</sup>	3.49×10 <sup>4</sup>	2324.63	2324.63
	3060		30×60	1.72	625.63	5.89×10 <sup>4</sup>	23.60×10 <sup>4</sup>	3927.85	7877.04
AOB03	3030		30×30	0.85	308.56	2.74×10 <sup>4</sup>	2.74×10 <sup>4</sup>	1827.53	1827.53
	3030A			0.87	315.73	2.96×10 <sup>4</sup>	2.67×10 <sup>4</sup>	1918.28	1776.67
	3030B			0.92	333.73	2.98×10 <sup>4</sup>	2.98×10 <sup>4</sup>	1895.81	1895.81
	3030R			0.81	293.64	2.34×10 <sup>4</sup>	2.34×10 <sup>4</sup>	1474.11	1474.12
	3060		30×60	1.53	555.89	5.14×10 <sup>4</sup>	19.37×10 <sup>4</sup>	3428.80	6456.60
	6630R		60×60	2.12	770.90	23.51×10 <sup>4</sup>	23.51×10 <sup>4</sup>	6954.86	6954.86
	6060			2.44	887.52	34.88×10 <sup>4</sup>	34.88×10 <sup>4</sup>	11627.90	11627.90
	5050S		50×50	2.15	781.26	18.51×10 <sup>4</sup>	18.51×10 <sup>4</sup>	7404.08	7404.08
	50100S		50×100	4.21	1531.59	40.75×10 <sup>4</sup>	145.90×10 <sup>4</sup>	16300.48	19179.68
	3030		50~6000		0.85	308.56	2.74×10 <sup>4</sup>	2.74×10 <sup>4</sup>	1827.53
3030A		0.87		315.73	2.96×10 <sup>4</sup>	2.67×10 <sup>4</sup>	1918.28	1776.67	
3030B		0.92		333.73	2.98×10 <sup>4</sup>	2.98×10 <sup>4</sup>	1895.81	1895.81	
3030H		0.89		322.90	3.19×10 <sup>4</sup>	2.59×10 <sup>4</sup>	2124.73	1725.82	
3030T		0.94		340.28	3.20×10 <sup>4</sup>	2.94×10 <sup>4</sup>	2132.44	1857.93	
3330		0.96		346.36	2.72×10 <sup>4</sup>	3.32×10 <sup>4</sup>	1371.92	1694.71	
3345		0.95		344.78	2.81×10 <sup>4</sup>	3.23×10 <sup>4</sup>	1370.22	1605.58	
3360		0.95		345.15	2.91×10 <sup>4</sup>	3.16×10 <sup>4</sup>	1464.56	1611.07	
3030R		0.81		293.64	2.34×10 <sup>4</sup>	2.34×10 <sup>4</sup>	1474.11	1474.12	
3030X		0.74		267.24	1.98×10 <sup>4</sup>	1.98×10 <sup>4</sup>	1179.65	1179.65	
AOB05	3042F		30×42	1.03	374.63	3.69×10 <sup>4</sup>	4.16×10 <sup>4</sup>	2118.30	1709.17
	3060			1.53	555.89	5.14×10 <sup>4</sup>	19.37×10 <sup>4</sup>	3428.80	6456.60
	3060A		30×60	1.61	582.83	5.71×10 <sup>4</sup>	19.75×10 <sup>4</sup>	3630.76	6583.20
	3060B			1.60	581.43	5.63×10 <sup>4</sup>	20.20×10 <sup>4</sup>	3608.75	6706.60
	3060H			1.68	611.55	6.349×10 <sup>4</sup>	20.159×10 <sup>4</sup>	4232.55	6719.55
	6630		60×60	2.27	823.65	25.74×10 <sup>4</sup>	25.74×10 <sup>4</sup>	7355.86	7335.86
	6630R			2.12	770.90	23.51×10 <sup>4</sup>	23.51×10 <sup>4</sup>	6954.86	6954.86
	6060			2.44	887.52	34.88×10 <sup>4</sup>	34.88×10 <sup>4</sup>	11627.90	11627.90
	6060S			2.43	883.09	35.62×10 <sup>4</sup>	35.62×10 <sup>4</sup>	11872.30	11872.30
	3090		30×90	2.21	803.23	7.545×10 <sup>4</sup>	61.01×10 <sup>4</sup>	5030.07	13558.53
	6090		60×90	3.48	1265.98	53.22×10 <sup>4</sup>	112.92×10 <sup>4</sup>	17740.67	25092.38
	30120		30×120	2.89	1049.00	9.95×10 <sup>4</sup>	138.80×10 <sup>4</sup>	6631.27	23133.70
	30150		30×150	3.68	1335.89	12.96×10 <sup>4</sup>	268.17×10 <sup>4</sup>	8641.53	35755.96
	60120		60×120	4.12	1498.18	68.70×10 <sup>4</sup>	243.42×10 <sup>4</sup>	22889.97	40569.25
	5050S		50×50	2.15	781.26	18.51×10 <sup>4</sup>	18.51×10 <sup>4</sup>	7404.08	7404.08
	50100S		50×100	4.21	1531.59	40.75×10 <sup>4</sup>	145.90×10 <sup>4</sup>	16300.48	29179.68
	100100S		100×100	5.35	1944.74	243.97×10 <sup>4</sup>	243.97×10 <sup>4</sup>	48794.52	48794.52



型号	L	截面尺寸
代码 规格	最小单位0.5	
AOB05 3030A	50~6000	30×30
AOB05 3030B		

可选加工

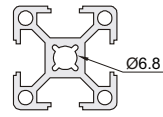
型号	L	可选加工代码
代码 规格	最小单位0.5	
AOB05 3030A	50~6000	LM RM DM
AOB05 3030B		

AOB05 — 3030B — L450 — RM



可选加工

端面螺孔加工

代码	技术说明
	变更通孔为螺孔
LM(左端面)	选型方法 LM/RM/DM 
RM(右端面)	
DM(双端面)	
① Ø6.8通孔变更为螺孔M8深20.	

① 可选加工见P603-608.

