

### 成品订购码

同径类接头

PL 6 01 □ □

① ② ③ ④ ⑤

① 规格代号	② 接管口径	③ 连接螺纹	④ 颜色代号	⑤ 牙型代号	
PHW: F型螺纹可旋三通 	PL: L型螺纹二通 	连接螺纹 适用接管口径  M5: M5X0.8 $\Phi 4, \Phi 6$  4: $\Phi 4\text{mm}$ 6: $\Phi 6\text{mm}$ 8: $\Phi 8\text{mm}$ 10: $\Phi 10\text{mm}$ 12: $\Phi 12\text{mm}$	颜色代号 颜色定义 适用规格  空白: 灰色 接口: 灰色 本体: 灰色  D: 黑色 接口: 黑色 本体: 黑色	其它 其它 其它 其它 其它 其它	
PHF: 串联肘节 	PLL: L型加长螺纹二通 				空白: PT牙
PEB: T型正螺纹三通 	PLF: L型内螺纹二通 				
PED: T型侧螺纹三通 	PCF: 内螺纹直通 				
PYB: Y型螺纹三通 	PMF: 内牙穿板直通 				
PZB: 十字螺纹四通 	PH: 外六角肘节 				

变径类接头:

PKD 6-4 01 □ □

① ② ③ ④ ⑤ ⑥

① 规格代号	② 接管口径	③ 接管口径	④ 连接螺纹	⑤ 颜色代号	⑥ 牙型代号
PKD: 减径螺纹五通 	6: $\Phi 6\text{mm}$ 8: $\Phi 8\text{mm}$ 10: $\Phi 10\text{mm}$	4: $\Phi 4\text{mm}$ 6: $\Phi 6\text{mm}$ 8: $\Phi 8\text{mm}$	01: PT1/8 02: PT1/4 03: PT3/8	颜色代号 颜色定义 空白: 灰色 接口: 灰色 本体: 灰色 D: 黑色 接口: 黑色 本体: 黑色	空白: PT牙

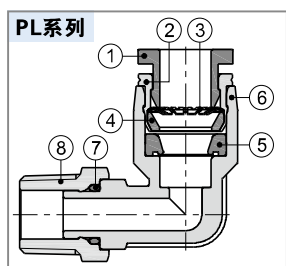
### 产品规格

使用压力范围	0~10kgf/cm <sup>2</sup> (0~1.0MPa)
负压	-750mmHg(10Torr)
保证耐压力	1.5MPa
使用温度范围(°C)	-20~70
适用软管	尼龙软管或PU管
颜色	灰色/黑色

### 产品特性

- 1、具有多种型号规格，广泛应用于各类气动系统；
- 2、流通性能优越，可通过与气管内径同容量之流量；
- 3、拔插接管简单方便快捷，与气管连接部份安全可靠又耐用；
- 4、螺纹部分涂有密封胶，M5公制螺纹附密封垫片，确保螺纹连接部份无泄漏；
- 5、镀镍的金属体可以防腐蚀和污染，应用范围更宽广。

### 内部结构



序号	名称	材质
1	塑胶接口	POM
2	定位环	铝合金
3	弹簧垫片	不锈钢
4	定位座	POM
5	异型O令	NBR
6	本体	PBT
7	O型环	NBR
8	转换接头	黄铜

### 接口端螺纹与插管端内径配置表

产品系列	螺纹规格	插管口径				
		$\Phi 4$	$\Phi 6$	$\Phi 8$	$\Phi 10$	$\Phi 12$
PL	M5	●	●			
	PT1/8	●	●	●	●	●
	PT1/4	●	●	●	●	●
	PT3/8		●	●	●	●
	PT1/2		●	●	●	●
PLL	M5	●	●			
	PT1/8	●	●	●	●	●
	PT1/4	●	●	●	●	●
	PT3/8		●	●	●	●
	PT1/2		●	●	●	●
PEB PED PYB	M5	●	●			
	PT1/8	●	●	●	●	●
	PT1/4	●	●	●	●	●
	PT3/8		●	●	●	●
	PT1/2		●	●	●	●
PH PHF	M5	●	●			
	PT1/8	●	●	●	●	●
	PT1/4		●	●	●	●
	PT3/8		●	●	●	●
	PT1/2		●	●	●	●
PHW	PT1/8	●	●	●	●	●
	PT1/4		●	●	●	●
	PT3/8		●	●	●	●
	PT1/2		●	●	●	●
PZB	PT1/8		●	●	●	●
	PT1/4		●	●	●	●
	PT3/8		●	●	●	●
	PT1/2		●	●	●	●

产品系列	螺纹规格	插管口径				
		$\Phi 4$	$\Phi 6$	$\Phi 8$	$\Phi 10$	$\Phi 12$
PLF	M5	●	●			
	PT1/8	●	●	●	●	●
	PT1/4	●	●	●	●	●
	PT3/8		●	●	●	●
	PT1/2		●	●	●	●
PCF	M5	●	●			
	PT1/8	●	●	●	●	●
	PT1/4	●	●	●	●	●
	PT3/8		●	●	●	●
	PT1/2		●	●	●	●
PMF	M5	●	●			
	PT1/8	●	●	●	●	●
	PT1/4	●	●	●	●	●
	PT3/8		●	●	●	●
	PT1/2		●	●	●	●

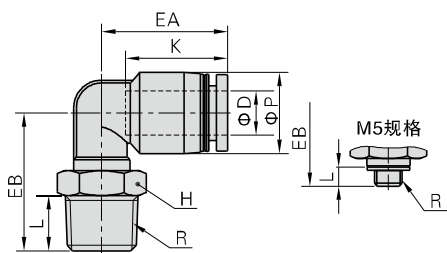
产品系列	螺纹规格	插管口径		
		$\Phi 6-\Phi 4$	$\Phi 8-\Phi 6$	$\Phi 10-\Phi 8$
PKD	PT1/8	●		
	PT1/4		●	
	PT3/8			●

# 辅助元件——管接头

## 插管—螺纹类

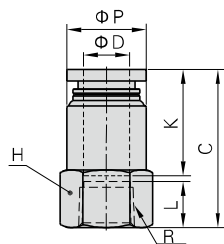
### 外部规格

#### PL系列



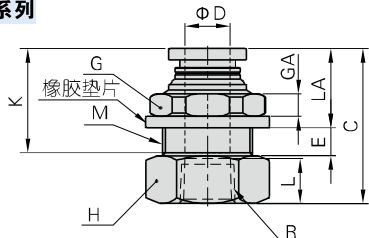
型号/符号	ΦD	R	ΦP	L	K	EA	EB	对边H	重量(g)
PL4M5	4	M5×0.8	9	3.5	14	17	15	8	3
PL401		PT1/8	9	7.5	14	17	18.5	10	4.5
PL402		PT1/4	9	10	14	17	22.0	14	12
PL6M5	6	M5×0.8	12.5	3.5	17	20	17.0	8	4.5
PL601		PT1/8	12.5	7.5	17	20	20.5	10	6
PL602		PT1/4	12.5	10	17	20	24.0	14	13.5
PL603	6	PT3/8	12.5	11	17	20	25.5	17	20.5
PL604		PT1/2	12.5	14	17	20	30.0	21	36
PL801		PT1/8	15	7.5	18.5	23	20.5	10	7.5
PL802	8	PT1/4	15	10	18.5	23	25.0	14	13
PL803		PT3/8	15	11	18.5	23	26.5	17	21
PL804		PT1/2	15	14	18.5	23	31.0	21	36
PL1001	10	PT1/8	18	7.5	21	25.5	25.0	17	16.5
PL1002		PT1/4	18	10	21	25.5	27.0	17	19
PL1003		PT3/8	18	11	21	25.5	28.0	17	21
PL1004	10	PT1/2	18	14	21	25.5	32.5	21	37
PL1201		PT1/8	21	7.5	23	28.5	26.5	17	19
PL1202		12	PT1/4	21	10	23	28.5	28.5	17
PL1203	PT3/8		21	11	23	29.5	33	17	25.5
PL1204	12	PT1/2	21	14	23	29.5	34	21	37

#### PCF系列



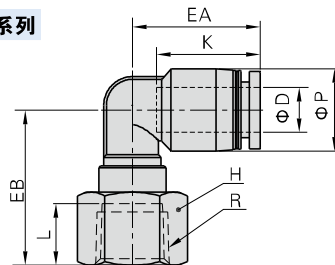
型号/符号	ΦD	R	ΦP	L	C	K	对边H	重量(g)	
PCF4M5	4	M5×0.8	9	5	21	14	10	2.7	
PCF401		PT1/8	9.5	8	23	14	14	4.5	
PCF402		PT1/4	9.5	11	26	14	17	6.5	
PCF6M5	6	M5×0.8	12	5	21.5	16.5	12	3.9	
PCF601		PT1/8	12.5	8	25.5	16.5	14	5.6	
PCF602		PT1/4	12.5	11	28.5	16.5	17	7.5	
PCF603	6	PT3/8	13	12	29.5	16.5	21	10.7	
PCF604		PT1/2	13	13.5	31.0	16.5	25	13.8	
PCF801		PT1/8	14	8	27.5	18.5	14	5.8	
PCF802	8	PT1/4	14.5	11	30.5	18.5	17	8.4	
PCF803		PT3/8	14.5	12	31.5	18.5	21	11.2	
PCF804		PT1/2	14.5	13.5	33	18.5	25	14.4	
PCF1001	10	PT1/8	17	8	29	21	17	9.5	
PCF1002		PT1/4	17	11	33	21	17	9.9	
PCF1003		PT3/8	18	12	34	21	21	14	
PCF1004	10	PT1/2	18	13.5	35.5	21	25	17.1	
PCF1202		12	PT1/4	21	11	33.5	23	21	17.5
PCF1203			PT3/8	21	12	35.5	23	21	16.6
PCF1204	12	PT1/2	21	13.5	37	23	25	19.7	

#### PMF系列



型号/符号	ΦD	R	M	L	C	K	LA	E	GA	对边G	对边H	重量(g)
PMF401	4	PT1/8	M12X1	8	25	14	12	4	4	14	14	6.4
PMF402		PT1/4	M12X1	11	29	14	12	4	4	14	17	9
PMF601	6	PT1/8	M14X1	8	25.5	16.5	12.5	5	4	17	17	9.1
PMF602		PT1/4	M14X1	11	30.5	16.5	12.5	5	4	17	17	10.9
PMF603	6	PT3/8	M14X1	12	31.5	16.5	12.5	5	4	17	21	13.2
PMF801		PT1/8	M16X1	8	27.5	18.5	13.5	5.5	4	19	19	12.8
PMF802	8	PT1/4	M16X1	11	32	18.5	13.5	5.5	4	19	19	15.7
PMF803		PT3/8	M16X1	12	33	18.5	13.5	5.5	4	19	21	15
PMF804	8	PT1/2	M16X1	13.5	34.5	18.5	13.5	5.5	4	19	25	18.1
PMF1001		PT1/8	M20X1	8	30	21	14.5	7.5	5	24	22	19.6
PMF1002	10	PT1/4	M20X1	11	35	21	14.5	7.5	5	24	22	22.8
PMF1003		PT3/8	M20X1	12	36	21	14.5	7.5	5	24	22	21.1
PMF1004	10	PT1/2	M20X1	13.5	37.5	21	14.5	7.5	5	24	25	23.2
PMF1202		12	PT1/4	M22X1	11	34.5	23	15.5	8	6	27	24
PMF1203	PT3/8		M22X1	12	37.5	23	15.5	8	6	27	24	27
PMF1204	12	PT1/2	M22X1	13.5	39	23	15.5	8	6	27	25	26.2

#### PLF系列

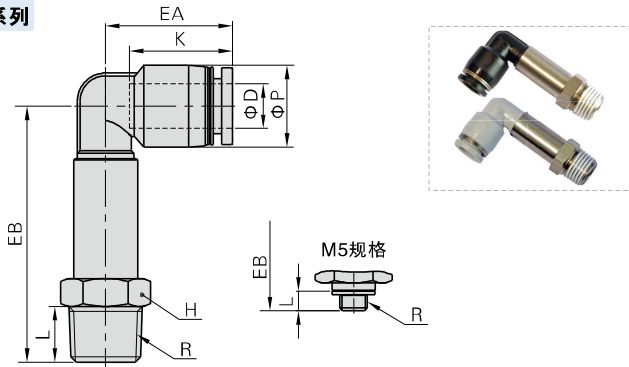


型号/符号	ΦD	R	ΦP	L	K	EA	EB	对边H	重量(g)
PLF4M5	4	M5×0.8	9	5	14	17	16	10	2.9
PLF401		PT1/8	9	8	14	17	21	14	4.6
PLF402		PT1/4	9	11	14	17	24	17	6.8
PLF6M5	6	M5×0.8	12.5	5	17	20	18.5	10	7
PLF601		PT1/8	12.5	8	17	20	23	14	5.8
PLF602		PT1/4	12.5	11	17	20	26	17	8
PLF603	6	PT3/8	12.5	12	17	20	27	21	10.7
PLF801		PT1/8	15	8	18.5	23	20	14	6.6
PLF802		8	PT1/4	15	11	18.5	23	27.5	17
PLF803	PT3/8		15	12	18.5	23	28.5	21	11.9
PLF804	8	PT1/2	15	13.5	18.5	23	30	25	15.2
PLF1001		PT1/8	18	8	21	25.5	24	17	11.3
PLF1002	10	PT1/4	18	11	21	25.5	26.5	17	11.2
PLF1003		PT3/8	18	12	21	25.5	30	21	14.5
PLF1004	10	PT1/2	18	13.5	21	25.5	31.5	25	17.4
PLF1202		12	PT1/4	21	11	23	28.5	28.5	17
PLF1203	PT3/8		21	12	23	29.5	32	21	17.4
PLF1204	12	PT1/2	21	13.5	23	29.5	33	25	20.4

# 辅助元件——管接头

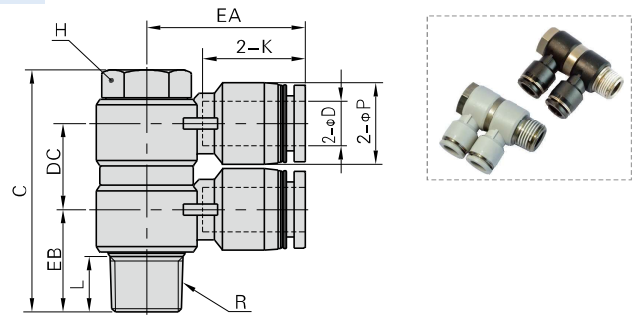
## 插管—螺纹类

### PLL系列



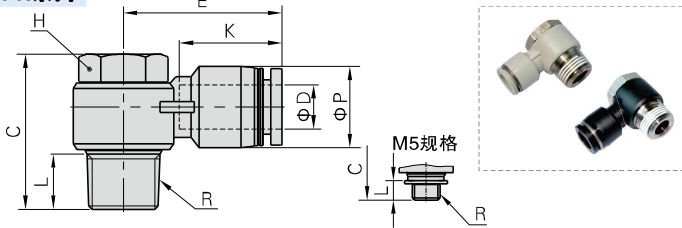
型号\符号	ΦD	R	ΦP	L	K	EA	EB	对边H	重量(g)
PLL4M5	4	M5×0.8	9	3.5	14	17	32.5	8	8.9
PLL401		PT1/8	9	7.5	14	17	35.5	10	12.3
PLL402	6	PT1/4	9	10	14	17	38.5	14	16.9
PLL6M5		M5×0.8	12.5	3.5	17	20	34.5	8	9.9
PLL601	6	PT1/8	12.5	7.5	17	20	37.5	10	13
PLL602		PT1/4	12.5	10	17	20	40.5	14	18
PLL603	8	PT3/8	12.5	11	17	20	43	17	23.4
PLL801		PT1/8	15	7.5	18.5	23	43.5	12	16.6
PLL802	8	PT1/4	15	10	18.5	23	45.5	14	22.7
PLL803		PT3/8	15	11	18.5	23	48	17	27.7
PLL1001	10	PT1/8	18	7.5	21	25.5	50.5	15	37.5
PLL1002		PT1/4	18	10	21	25.5	53.5	15	40.6
PLL1003	10	PT3/8	18	11	21	25.5	54.5	17	40.7
PLL1004		PT1/2	18	14	21	25.5	59	21	47.4
PLL1202	12	PT1/4	21	10	23	28.5	55.5	15	43
PLL1203		PT3/8	21	11	23	29.5	60	17	55.4
PLL1204	12	PT1/2	21	14	23	29.5	63	21	56.7

### PHW系列



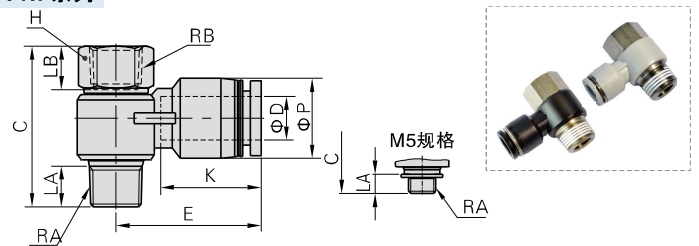
型号\符号	ΦD	R	ΦP	L	C	K	EA	EB	DC	对边H	重量(g)
PHW401	4	PT1/8	9	7.5	38	14	20.5	14.5	13	11	19
PHW601	6	PT1/8	12.5	7.5	38	16.5	23.0	15	13	11	21
PHW602		PT1/4	12.5	10	43.5	16.5	25.0	17.5	15.5	14	40.2
PHW603	8	PT3/8	12.5	11	50	16.5	27.0	20	16.5	19	69.2
PHW801		PT1/8	15	7.5	40.5	18.5	26.5	16.5	15.5	11	23.6
PHW802	8	PT1/4	15	10	43.5	18.5	28.5	18.5	15.5	14	40.8
PHW803		PT3/8	15	11	50	18.5	29.5	20	16.5	19	70.4
PHW804	10	PT1/2	15	14	61	18.5	32	24.5	22	24	134.8
PHW1002		PT1/4	18	10	46.5	21	31	20	18.5	14	47
PHW1003	10	PT3/8	18	11	55	21	33	21	22	19	87.5
PHW1004		PT1/2	18	14	61	21	35.5	25	22	24	137.7
PHW1203	12	PT3/8	21	11	55	23	36	23	22	19	86.4
PHW1204		PT1/2	21	14	61	23	38	26.5	22	24	147.5

### PH系列



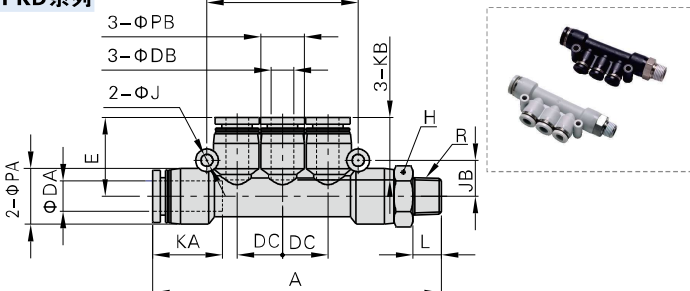
型号\符号	ΦD	R	ΦP	L	C	K	E	对边H	重量(g)
PH4M5	4	M5×0.8	9	3.5	17	14	19	8	5.8
PH401		PT1/8	9	7.5	25	14	20.5	11	12.8
PH6M5	6	M5×0.8	12.5	3.5	17	16.5	23.5	8	6.8
PH601		PT1/8	12.5	7.5	25	16.5	23	11	14
PH602	6	PT1/4	12.5	10	28	16.5	25	14	25.4
PH603		PT3/8	12.5	11	33	16.5	27	19	50.2
PH801	8	PT1/8	15	7.5	25	18.5	26.5	11	14.7
PH802		PT1/4	15	10	28	18.5	28.5	14	26.4
PH803	8	PT3/8	15	11	33	18.5	29.5	19	49.4
PH804		PT1/2	15	14	39	18.5	32	24	89
PH1002	10	PT1/4	18	10	28	21	31	14	27.7
PH1003		PT3/8	18	11	33	21	33	19	51.1
PH1004	10	PT1/2	18	14	39	21	35.5	24	88.5
PH1203		PT3/8	21	11	33	23	36	19	53
PH1204	12	PT1/2	21	14	39	23	38	24	92.8

### PHF系列



型号\符号	ΦD	RA	RB	ΦP	LA	LB	C	K	E	对边H	重量(g)
PHF4M5	4	M5×0.8	M5×0.8	9	3.5	6	20	14	19	8	6.2
PHF401		PT1/8	PT1/8	9	7.5	8	29.5	14	20.5	12	12.9
PHF6M5	6	M5×0.8	M5×0.8	12.5	3.5	6	20	16.5	23.5	8	7.1
PHF601		PT1/8	PT1/8	12.5	7.5	8	29.5	16.5	23	12	13.9
PHF602	6	PT1/4	PT1/4	12.5	10	11	35	16.5	25	17	30.3
PHF603		PT3/8	PT3/8	12.5	11	12	40	16.5	27	19	44.2
PHF801	8	PT1/8	PT1/8	15	7.5	8	29.5	18.5	26.5	12	15
PHF802		PT1/4	PT1/4	15	10	11	35	18.5	28.5	17	30.7
PHF803	8	PT3/8	PT3/8	15	11	12	40	18.5	29.5	19	44.8
PHF804		PT1/2	PT1/2	15	14	13.5	47.5	18.5	32	24	84.7
PHF1002	10	PT1/4	PT1/4	18	10	11	35	21	31	17	32
PHF1003		PT3/8	PT3/8	18	11	12	40	21	33	19	46.2
PHF1004	10	PT1/2	PT1/2	18	14	13.5	47.5	21	35.5	24	86.1
PHF1203		PT3/8	PT3/8	21	11	12	40	23	36	19	48.4
PHF1204	12	PT1/2	PT1/2	21	14	13.5	47.5	23	38	24	89.7

### PKD系列



型号\符号	ΦDA	ΦDB	R	L	A	ΦPA	ΦPB	KA
PKD6-401	6	4	PT1/8	7.5	66.5	12.5	9	16.5
PKD8-602	8	6	PT1/4	10	79	15	12.5	18.5
PKD10-803	10	8	PT3/8	11	91.5	18	15	21

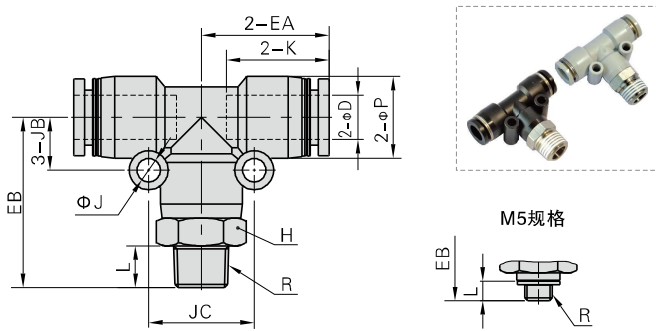
  

型号\符号	KB	ΦJ	JB	JC	DC	E	对边H	重量(g)
PKD6-401	14	3.2	8	34	10	17.5	12	15.8
PKD8-602	16.5	3.2	9.5	40	12	21	14	26.5
PKD10-803	18.5	4.3	11	48	14.5	24	17	38.2

# 辅助元件——管接头

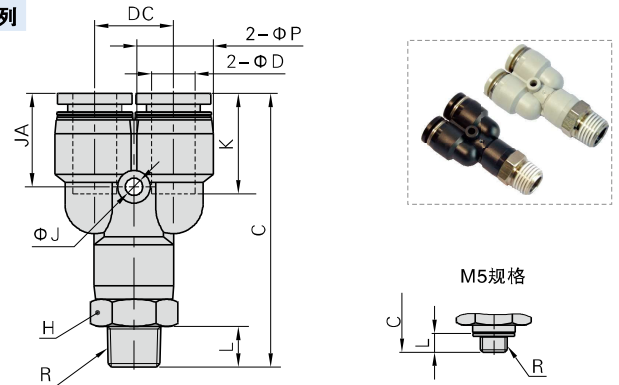
## 插管—螺纹类

### PEB系列



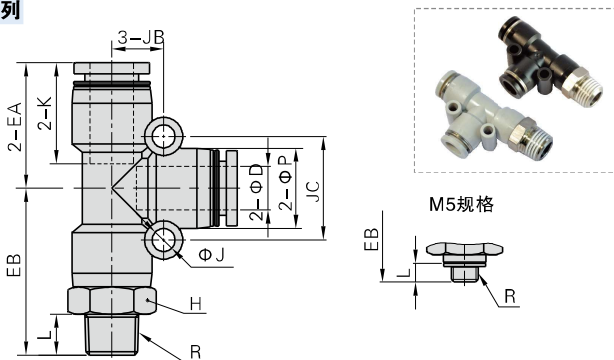
型号\符号	φD	R	φP	L	K	EA	EB	φJ	JB	JC	对边H	重量(g)
PEB4M5	4	M5×0.8	9	3.5	14	17	21	3.2	6.5	13	9	6.8
PEB401		PT1/8	9	7.5	14	17	25	3.2	6.5	13	10	8.8
PEB402		PT1/4	9	10	14	17	28	3.2	6.5	13	14	15.5
PEB6M5	6	M5×0.8	12.5	3.5	16.5	20	23.5	3.2	8	16	12	11.2
PEB601		PT1/8	12.5	7.5	16.5	20	27.5	3.2	8	16	12	13.5
PEB602		PT1/4	12.5	10	16.5	20	30.5	3.2	8	16	14	18.6
PEB603	6	PT3/8	12.5	11	16.5	20	32	3.2	8	16	17	25.3
PEB801		PT1/8	15	7.5	18.5	23	30.5	4.3	9.5	19	14	18.4
PEB802		PT1/4	15	10	18.5	23	33	4.3	9.5	19	14	21.3
PEB803	8	PT3/8	15	11	18.5	23	34.5	4.3	9.5	19	17	28.2
PEB804		PT1/2	15	14	18.5	23	38.5	4.3	9.5	19	21	41
PEB1001		PT1/8	18	7.5	21	26.5	34	4.3	11	22	17	26.7
PEB1002	10	PT1/4	18	10	21	26.5	36.5	4.3	11	22	17	29.2
PEB1003		PT3/8	18	11	21	26.5	37.5	4.3	11	22	17	31.9
PEB1004		PT1/2	18	14	21	26.5	41.5	4.3	11	22	21	45.4
PEB1202	12	PT1/4	21	10	23	30	41	4.3	13	26	21	49.6
PEB1203		PT3/8	21	11	23	30	42	4.3	13	26	21	51.2
PEB1204		PT1/2	21	14	23	30	45	4.3	13	26	21	57.3

### PYB系列



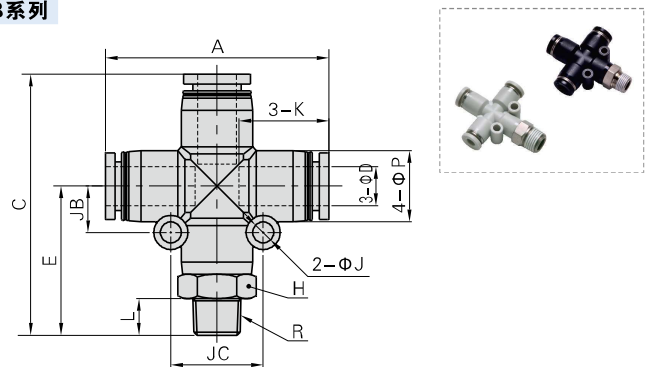
型号\符号	φD	R	φP	L	C	K	φJ	JA	DC	对边H	重量(g)
PYB4M5	4	M5×0.8	9	3.5	35.5	14	3.2	13	10	9	6.7
PYB401		PT1/8	9	7.5	39.5	14	3.2	13	10	10	9
PYB402		PT1/4	9	10	42.5	14	3.2	13	10	14	10.8
PYB6M5	6	M5×0.8	12.5	3.5	40.5	16.5	3.2	15.5	12	12	11.1
PYB601		PT1/8	12.5	7.5	44.5	16.5	3.2	15.5	12	12	13.7
PYB602		PT1/4	12.5	10	47.5	16.5	3.2	15.5	12	14	18.2
PYB603	6	PT3/8	12.5	11	49.0	16.5	3.2	15.5	12	17	25
PYB801		PT1/8	15	7.5	50	18.5	3.2	17	14.5	14	19.8
PYB802		PT1/4	15	10	52.5	18.5	3.2	17	14.5	14	22
PYB803	8	PT3/8	15	11	54	18.5	3.2	17	14.5	17	27.7
PYB804		PT1/2	15	14	58	18.5	3.2	17	14.5	21	40.8
PYB1001		PT1/8	18	7.5	56.5	21	4.3	19.5	18	17	27.4
PYB1002	10	PT1/4	18	10	59	21	4.3	19.5	18	17	29.5
PYB1003		PT3/8	18	11	60	21	4.3	19.5	18	17	32.5
PYB1004		PT1/2	18	14	64	21	4.3	19.5	18	21	45.4
PYB1202	12	PT1/4	21	10	66	23	4.3	21	20.5	21	27.3
PYB1203		PT3/8	21	11	67	23	4.3	21	20.5	21	51.8
PYB1204		PT1/2	21	14	70	23	4.3	21	20.5	21	56.8

### PED系列



型号\符号	φD	R	φP	L	K	EA	EB	φJ	JB	JC	对边H	重量(g)
PED4M5	4	M5×0.8	9	3.5	14	17	21	3.2	6.5	13	9	6.8
PED401		PT1/8	9	7.5	14	17	25	3.2	6.5	13	10	8.8
PED402		PT1/4	9	10	14	17	28	3.2	6.5	13	14	15.5
PED6M5	6	M5×0.8	12.5	3.5	16.5	20	23.5	3.2	8	16	12	11.2
PED601		PT1/8	12.5	7.5	16.5	20	27.5	3.2	8	16	12	13.5
PED602		PT1/4	12.5	10	16.5	20	30.5	3.2	8	16	14	18.6
PED603	6	PT3/8	12.5	11	16.5	20	32	3.2	8	16	17	25.3
PED801		PT1/8	15	7.5	18.5	23	30.5	4.3	9.5	19	14	18.4
PED802		PT1/4	15	10	18.5	23	33	4.3	9.5	19	14	21.3
PED803	8	PT3/8	15	11	18.5	23	34.5	4.3	9.5	19	17	28.2
PED804		PT1/2	15	14	18.5	23	38.5	4.3	9.5	19	21	41
PED1001		PT1/8	18	7.5	21	26.5	34	4.3	11	22	17	26.7
PED1002	10	PT1/4	18	10	21	26.5	36.5	4.3	11	22	17	29.2
PED1003		PT3/8	18	11	21	26.5	37.5	4.3	11	22	17	31.9
PED1004		PT1/2	18	14	21	26.5	41.5	4.3	11	22	21	45.4
PED1202	12	PT1/4	21	10	23	30	41	4.3	13	26	21	49.6
PED1203		PT3/8	21	11	23	30	42	4.3	13	26	21	51.2
PED1204		PT1/2	21	14	23	30	45	4.3	13	26	21	57.3

### PZB系列



型号\符号	φD	R	L	A	E	C	φP	K	φJ	JB	JC	对边H	重量(g)
PZB601	6	PT1/8	7.5		27.5	47.5						12	15.2
PZB602		PT1/4	10	39.5	30.5	50.5	12.5	16.5	3.2	8	16	14	20.4
PZB603		PT3/8	11		32	52						17	27
PZB801	8	PT1/8	7.5		30.5	53.5						14	20.9
PZB802		PT1/4	10	46	33	56	15	18.5	4.3	9.5	19	14	23.8
PZB803		PT3/8	11		34.5	57.5						17	29.9
PZB804	8	PT1/2	14		38.5	61.5						21	43.5
PZB1002		PT1/4	10		36.5	63						17	33.5
PZB1003		PT3/8	11	52.5	37.5	64	18	21	4.3	11	22	17	36.5
PZB1004	10	PT1/2	14		41.5	68						21	49.2
PZB1203		PT3/8	11	59.5	42	72	21	23	4.3	13	26	21	56.5
PZB1204		PT1/2	14		45	75						21	65.4