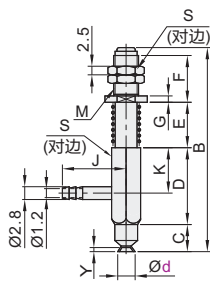


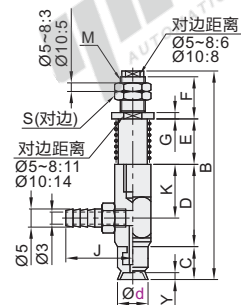
代码	类型	吸盘材质	颜色
WEH16	侧向配管弹簧型	丁腈橡胶	黑色
WEH17		硅胶	白色



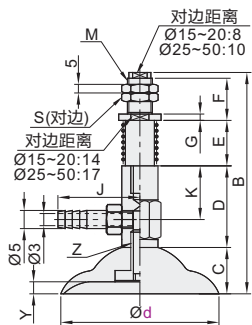
盘径 $\varnothing 2, 3.5$



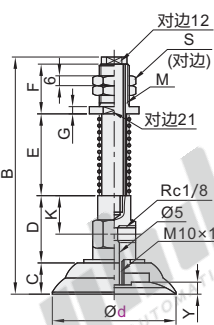
盘径 $\varnothing 5 \sim 10$



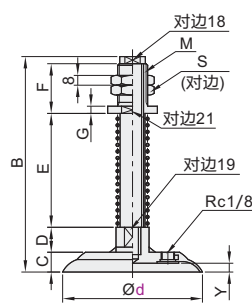
盘径 $\varnothing 15 \sim 50$



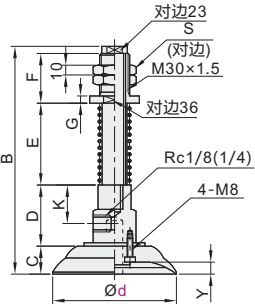
盘径 $\varnothing 60 \sim 95$



盘径 $\varnothing 100$



盘径 $\varnothing 120 \sim 200$



视角标准：第一视角

型号	行程	B	C	D	E	F	M	J	K	S	G	Y	Z
2	2.5	35.7			4.5								
	5	40.7			9.5								
3.5	2.5	35.7	4	16.4	4.5	9	M5	11	11	7	1.5	0.5	
	5	40.7			9.5								
5	3	51			6								
	10	65			20								
	15	75			30								
	25	95			50								
6	3	51	6.5		6							0.8	
	10	65			20	13							
	15	75			30		M9x1	21	13	12	-		
8	25	95			50								
	3	51.5	22.5		6								
	10	65.5			20							1.2	
10	15	75.5			30								
	25	95.5			50								
	3	60			8								
15	10	72	7.5		20	19	M11x1			14	-	1.5	
	20	92			8								
	30	112			20								
20	4	60			8								
	10	72			20							1.9	
	20	92	8		40								
25	30	112			60	19	M11x1	21	14	14	3		M5
	4	62	22		8								
	10	74			20							2.3	
30	20	94	10		40								
	30	114			60								
	6	87			13								
35	15	104			30							3	
	30	134	14		60								
	50	174			100								
40	6	85			13								
	15	102	12		30							2	
	30	132			60								
50	50	172			100								
	6	87			13								
	15	104			30	24	M14x1.5	23	20	17	4	3	
60	30	134			60								
	50	174			100								
	6	87			13								
80	15	104	14		30							3.5	
	30	134			60								
	50	174			100								
95	6	88			13								
	15	105			30							7	M8
	30	135			60								
100	50	175	15		100								
	10	110.5			20								
	30	150.5			60								
120	50	190.5			100								
	70	230.5	18.5		140							5	
	10	112.5			20								
150	30	152.5			60	28	M16x1.5		28	21	5		
	50	192.5	20.5		100								
	70	232.5			140								
200	10	113			20								
	30	153	21		60								
	50	193			100							6	
250	70	233			140								
	15	106			30								
	30	136			60								
300	50	176	19	16	100	35	M22x1.5		-	27	6		
	70	216			140								
	20	203.5	25.5		75								
400	100	293.5			165								
	20	210.5			75								
	100	300.5	32.5	50	165	45	M30x1.5		38	36	10	9	
500	20	215.5			75								
	100	305.5	37.5		165							13	

真空吸盘  
D7



请按图示订货

型号	行程	B
WEH16	95	233
WEH17	100	106

WEH16 - d95 - 70



未税价(元)

数量	1~29	30~
价格	100%	另行报价



交货期

5