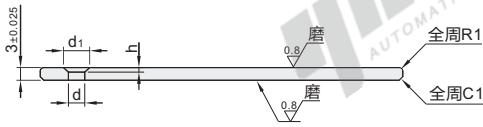


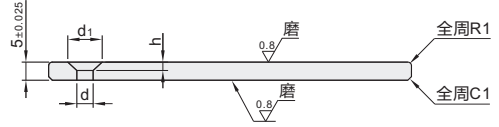
代码	类型	线性滑板厚度	材质
OBG01	锥孔型	3	高力黄铜(SP2) 镶嵌固体润滑剂
OBG02		5	
OBG11	沉孔型	5	
OBG12		10	



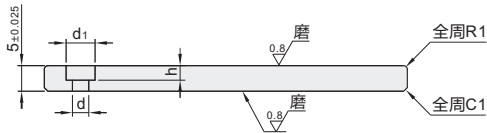
OBG01  
(板厚3mm)



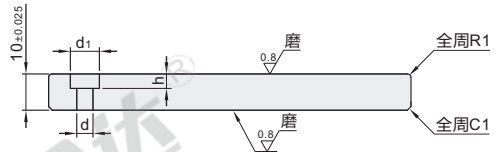
OBG02  
(板厚5mm)



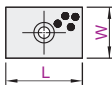
OBG11  
(板厚5mm)



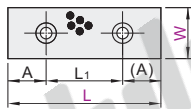
OBG12  
(板厚10mm)



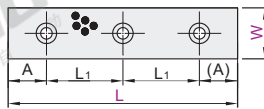
1K(1孔)



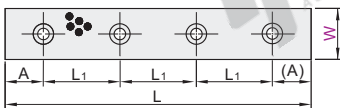
2K(2孔)



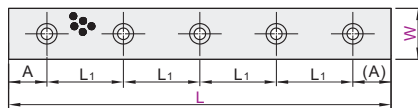
3K(3孔)



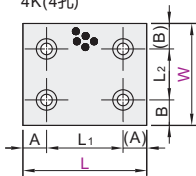
4K(4孔)



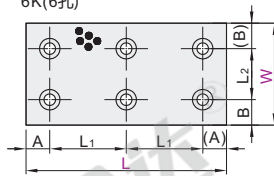
5K(5孔)



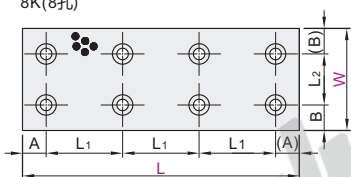
4K(4孔)



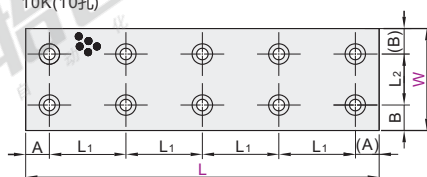
6K(6孔)



8K(8孔)



10K(10孔)



# 无油线性滑板

## 两面研磨型 · 锥孔型/沉孔型 铜合金

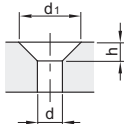
① OBG11仅有W尺寸20规格。 ② OBG01仅适用于L ( ) 尺寸。

型号 代码	W	L	安装 孔位	孔位置	A	L <sub>1</sub>	B	L <sub>2</sub>
锥孔型 (板厚3mm) OBG01 (板厚5mm) OBG02	20	(30)	1		—	—		
		(40)				20		
		(50)				30		
		(60)		2		40		
		80			10	60		
	100				40			
	120		3		50			
	150				65			
	200		4		60			
	250				13	56		
	300		5		14	68		
	(30)		1		—	—		
	(40)					20		
	(50)			2		30		
	(60)					40		
80			1列	10	60	—	—	
沉孔型 (板厚5mm) OBG11 (板厚10mm) OBG12	30	100				40		
		120		3		50		
		150				65		
		200		4		60		
		250				13	56	
	300		5		14	68		
	(40)		1		—	—		
	(60)					40		
	80		2		10	60		
	100					38		
	120		3		12	48		
	150					63		
	200		4		13	58		
	250					56		
	300		5		14	68		

型号 代码	W	L	安装 孔位	孔位置	A	L <sub>1</sub>	B	L <sub>2</sub>
锥孔型 (板厚5mm) OBG02	50	50	1		—	—		
		60				40		
		80		2		10		
		100					37	
		120		3			47	
	150				13	62		
	200		4			58		
	250					56		
	300		5	1列	14	68	—	—
	60		2		10	40		
沉孔型 (板厚10mm) OBG12	60	80				60		
		100				37		
		120		3			47	
		150				13	62	
		200		4			58	
	250					56		
	300		5			14	68	
	80				10	60		
	100		4			74		
	120					47		
80	150		6	2列	13	62	20	40
	200					87		
	250		8			74		
	300		10		14	68		

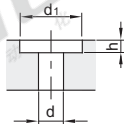
### 孔加工详图

OBG01 (内六角沉头螺钉孔)



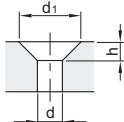
W	d	d <sub>1</sub>	h	螺钉规格
20	4.3	9.5	2.5	M4-20
30	5.3	11.1	2.8	M5-20
40	5.3	11.1	2.8	M5-20

OBG11(内六角薄圆柱头螺钉孔)



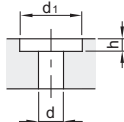
W	d	d <sub>1</sub>	h	螺钉规格
20	4.3	8	3	M4-10

OBG02 (内六角沉头螺钉孔)



W	d	d <sub>1</sub>	h	螺钉规格
20	4.3	9.5	2.5	M4-20
30	5.3	11.1	2.8	M5-20
40	6.5	13.1	3.3	M6-20
50	6.5	13.1	3.3	M6-20
60	8.5	17.6	4.3	M8-20
80	8.5	17.6	4.3	M8-20

OBG12(内六角薄圆柱头螺钉孔)



W	d	d <sub>1</sub>	h	螺钉规格
20	4.3	8	4.2	M4-20
30	5.3	9.5	5.2	M5-20
40	6.5	11	6.2	M6-20
50	6.5	11	6.2	M6-20
60	8.5	15	6.2	M8-20
80	8.5	15	6.2	M8-20

① 螺钉需另行购买。



请按图示订货

型号		
代码	W	L
OBG01	20	(30)
OBG02	20	(40)

OBG01—W20—L30



未税价(元)

● 优惠价

数量	1~9	10~
价格	100%	另行报价



交货期

7