

# 陶瓷轴承

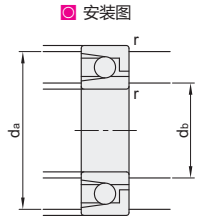
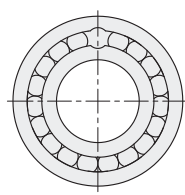
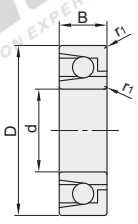
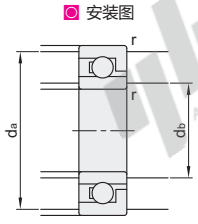
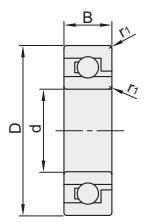
## ◀ 双面带密封圈型

代码	类型	材质			推荐使用最高温度
		套圈	球体	保持架	
BBD31	标准型	ZrO2	ZrO2	PTFE	240°C
BBD32				PEEK	
BBD41	满球型			—	500°C



标准型  
BBD31/32

满球型  
BBD41



视角标准：第一视角

型号 代码	轴承型号	d	D	B	r1	安装尺寸				参考重量 (g)	
						db		da	r		
						(min)	(max)	(max)	(max)		
	6800-2RS		19	5			12.5	17			4
	6900-2RS		22	6	0.3	12	13	20	0.3		7
	6000-2RS	10	26	8			13.5	24			14
	6200-2RS		30	9	0.6		16	26			25
	6300-2RS		35	11			16.5	31	0.6		40
	6801-2RS		21	5		14	14.5	19			5
	6901-2RS		24	6	0.3		15	22	0.3		8
	6001-2RS	12	28	8			16	26			17
	6201-2RS		32	10	0.6	16	17	28	0.6		28
	6301-2RS		37	12	1.0		18	32	1.0		46
	6802-2RS		24	5		17	17.5	22			5
	6902-2RS		28	7	0.3		17.5	26	0.3		12
	6002-2RS	15	32	9			19	30			24
	6202-2RS		35	11	0.6	19	20	31	0.6		35
	6302-2RS		42	13	1.0	20	22.5	37	1.0		64
	6803-2RS		26	5			19.5	24			5
	6903-2RS		30	7	0.3	19	20	28	0.3		13
	6003-2RS	17	35	10			21	33			32
	6203-2RS		40	12	0.6	21	23	36	0.6		52
	6303-2RS		47	14	1.0		25.5	42	1.0		87
	6804-2RS		32	7		22	22.5	30			13
	6904-2RS		37	9	0.3		24	35	0.3		28
	6004-2RS	20	42	12	0.6	24	26	38	0.6		52
	6204-2RS		47	14	1.0	25		42			82
	6304-2RS		52	15	1.1	26.5	28	45.5	1.0		110
	6805-2RS		37	7				35			16
	6905-2RS		42	9	0.3	27	29	40	0.3		32
	6005-2RS	25	47	12	0.6	29	30.5	43	0.6		61
	6205-2RS		52	15	1.0	30	32	47			99
	6305-2RS		62	17	1.1	31.5	36	55.5	1.0		180
	6806-2RS		42	7			33	40			18
	6906-2RS		47	9	0.3	32	34	45	0.3		40
	6006-2RS	30	55	13			37	50			89
	6206-2RS		62	16	1.0	35	39	57	1.0		150
	6306-2RS		72	19	1.1	36.5	42.5	65.5			270
	6807-2RS		47	7	0.3	37	38	45	0.3		21
	6907-2RS		55	10	0.6	39	40	51	0.6		58
	6007-2RS	35	62	14	1.0	40	42	57			120
	6207-2RS		72	17	1.1	41.5	45	65.5	1.0		220
	6307-2RS		80	21	1.5	43	47	72	1.5		360
	6808-2RS		52	7	0.3	42	43	50	0.3		20
	6908-2RS		62	12	0.6	44	45	58	0.6		90
	6008-2RS	40	68	15	1.0	45	47	63			150
	6208-2RS		80	18	1.1	46.5	51	73.5			280
	6308-2RS		90	23	1.5	48	53	82	1.5		490
	6809-2RS		58	7	0.3	47	47.5	56	0.3		29
	6909-2RS		68	12	0.6	49	50	64	0.6		97
	6009-2RS	45	75	16	1.0	50	53.5	70			190
	6209-2RS		85	19	1.1	51.5	55.5	78.5	1.0		320
	6309-2RS		100	25	1.5	53	61.5	92	1.5		640
	6810-2RS		65	7	0.3	52	52.5	63	0.3		38
	6910-2RS		72	12	0.6	54	55	68	0.6		100
	6010-2RS	50	80	16	1.0	55	57.5	75			200
	6210-2RS		90	20	1.1	56.5	60	83.5	1.0		350
	6310-2RS		110	27	2.0	59	68	101	2.0		820

关节轴承  
E7



型号	d	D	B
BBD31 6800-2RS	10	19	5
BBD32 6900-2RS		22	6



数量	1-9	10-
价格	100%	另行报价



BBD31—6800-2RS