

欧标20系列型材用配件-附件部分

装饰类

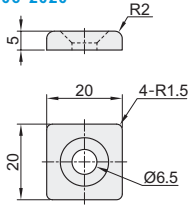
铝合金端盖

代码	类型	材质	表面处理
ARC01-206	铝合金端盖	A6063-T5	喷砂氧化
ARC03-206			黑色阳极氧化

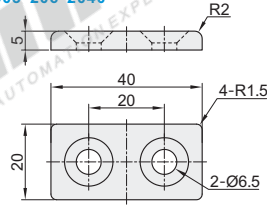
① 用于型材截面处，防尘，美观大方，连接牢固。



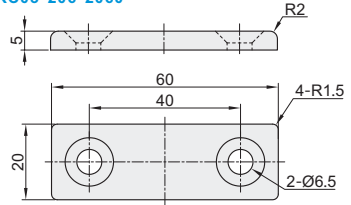
ARC01-206-2020
ARC03-206-2020



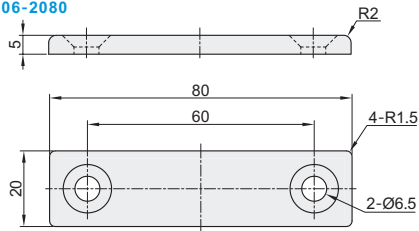
ARC01-206-2040
ARC03-206-2040



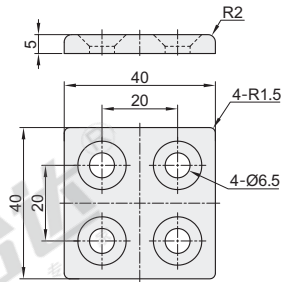
ARC01-206-2060
ARC03-206-2060



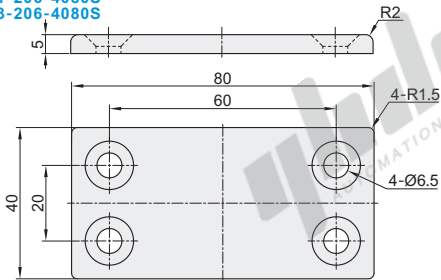
ARC01-206-2080
ARC03-206-2080



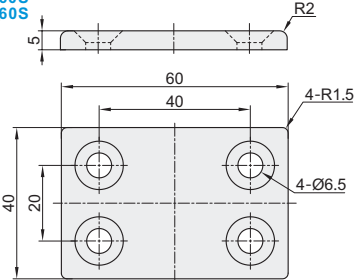
ARC01-206-4420
ARC03-206-4420



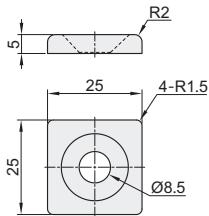
ARC01-206-4080S
ARC03-206-4080S



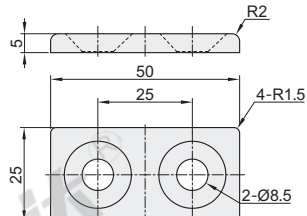
ARC01-206-4060S
ARC03-206-4060S



ARC01-206-2525
ARC03-206-2525



ARC01-206-2550
ARC03-206-2550



视角标准：第一视角

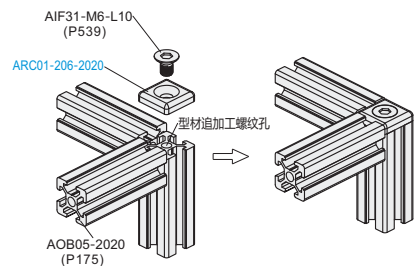
型号 代码	重量 (g/pcs)	适用型材		备注
		AOB02	AOB05	
ARC01-206-2020 ARC03-206-2020	4.5	H2020	2020 2020A 2020B 2020C	端盖配合 AIF31-M6-L10使用， 其中ARC01-206-2525、 ARC03-206-2525、 ARC01-206-2550、 ARC03-206-2550、 与AIF31-M8-L16 配合使用 (型材螺纹孔口倒角C1.0)
ARC01-206-2040 ARC03-206-2040	9.1	H2040	2040	
ARC01-206-2060 ARC03-206-2060	14.5	H2060	2060	
ARC01-206-2080 ARC03-206-2080	19.9	H2080	—	
ARC01-206-4420 ARC03-206-4420	18.3	H4420	4420	
ARC01-206-4060S ARC03-206-4060S	19.2		4060S	
ARC01-206-4080S ARC03-206-4080S	40.1		4080S	
ARC01-206-2525 ARC03-206-2525	6.6		2525	
ARC01-206-2550 ARC03-206-2550	13.2		2550	

EX

Example
使用示例

分解图

组装图



型号
ARC01-206-2020
ARC01-206-2040