

# 欧标30系列型材用配件-连接部分

## 挤压角座



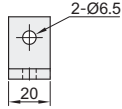
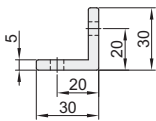
### 挤压角座

代码	类型	材质	表面处理
ABC01-G306	挤压角座	A6063-T5	喷砂氧化
ABC02-G306			喷砂氧化(断面、打孔处无氧化)
ABC03-G306			黑色阳极氧化

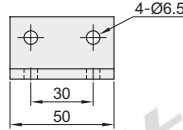


- ① 用于型材固定角度的外连接，可固定封板。
- ② 根据设计需求，孔距、长度可来图加工。
- ③ 此系列挤压角座不适用于AOB05-5050S、AOB02-H5050S、AOB05-50100S、AOB05-100100S。
- ④ ABC02系列产品表面有轻微划伤属于正常现象。

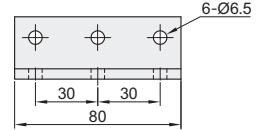
ABC01-G306-30-20  
ABC02-G306-30-20  
ABC03-G306-30-20



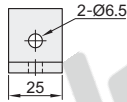
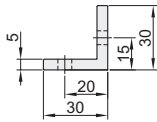
ABC01-G306-30-50  
ABC02-G306-30-50  
ABC03-G306-30-50



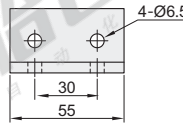
ABC01-G306-30-80  
ABC02-G306-30-80  
ABC03-G306-30-80



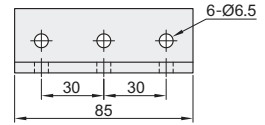
ABC01-G306-30-25  
ABC02-G306-30-25  
ABC03-G306-30-25



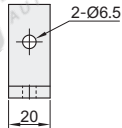
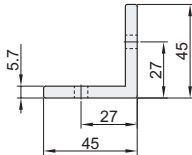
ABC01-G306-30-55  
ABC02-G306-30-55  
ABC03-G306-30-55



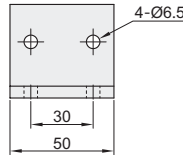
ABC01-G306-30-85  
ABC02-G306-30-85  
ABC03-G306-30-85



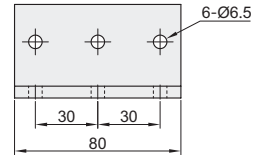
ABC01-G306-45-20  
ABC02-G306-45-20  
ABC03-G306-45-20



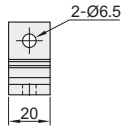
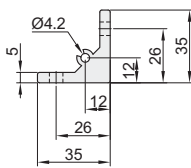
ABC01-G306-45-50  
ABC02-G306-45-50  
ABC03-G306-45-50



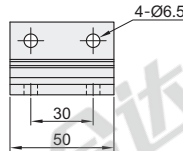
ABC01-G306-45-80  
ABC02-G306-45-80  
ABC03-G306-45-80



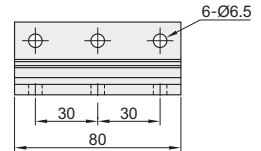
ABC01-G306-35-20  
ABC02-G306-35-20  
ABC03-G306-35-20



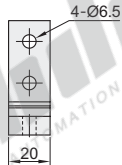
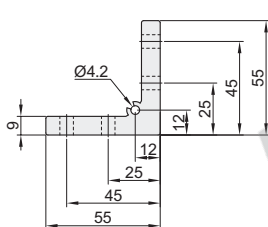
ABC01-G306-35-50  
ABC02-G306-35-50  
ABC03-G306-35-50



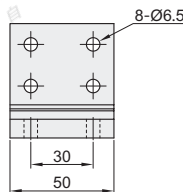
ABC01-G306-35-80  
ABC02-G306-35-80  
ABC03-G306-35-80



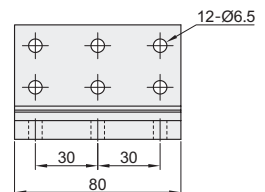
ABC01-G306-55-20  
ABC02-G306-55-20  
ABC03-G306-55-20

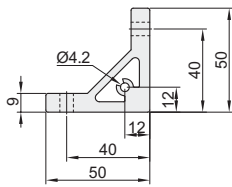


ABC01-G306-55-50  
ABC02-G306-55-50  
ABC03-G306-55-50

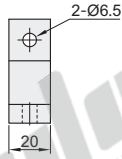


ABC01-G306-55-80  
ABC02-G306-55-80  
ABC03-G306-55-80

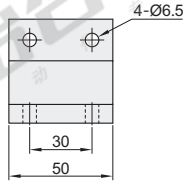




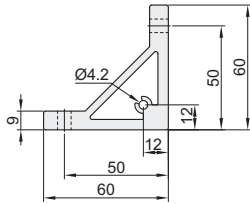
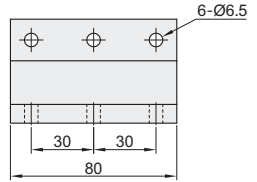
ABC01-G306-50-20  
ABC02-G306-50-20  
ABC03-G306-50-20



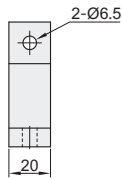
ABC01-G306-50-50  
ABC02-G306-50-50  
ABC03-G306-50-50



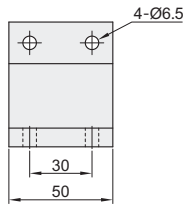
ABC01-G306-50-80  
ABC02-G306-50-80  
ABC03-G306-50-80



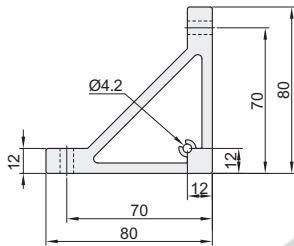
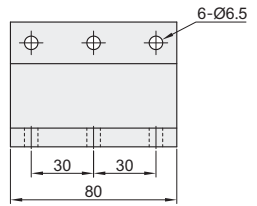
ABC01-G306-60-20  
ABC02-G306-60-20  
ABC03-G306-60-20



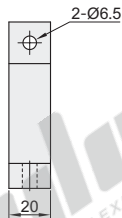
ABC01-G306-60-50  
ABC02-G306-60-50  
ABC03-G306-60-50



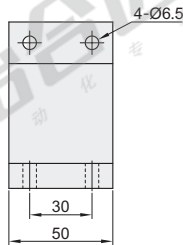
ABC01-G306-60-80  
ABC02-G306-60-80  
ABC03-G306-60-80



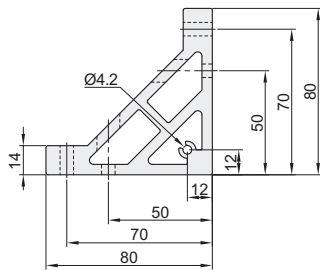
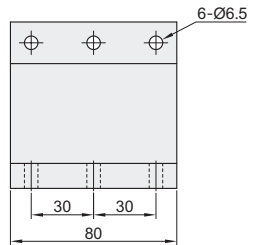
ABC01-G306-80-20  
ABC02-G306-80-20  
ABC03-G306-80-20



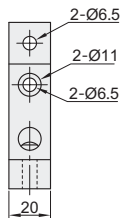
ABC01-G306-80-50  
ABC02-G306-80-50  
ABC03-G306-80-50



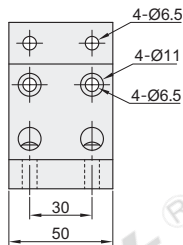
ABC01-G306-80-80  
ABC02-G306-80-80  
ABC03-G306-80-80



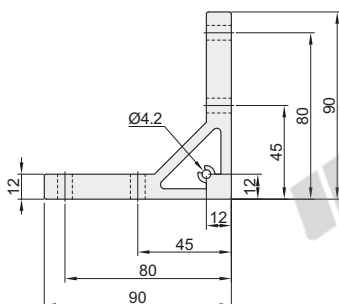
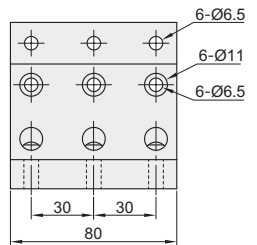
ABC01-G306-80B-20  
ABC02-G306-80B-20  
ABC03-G306-80B-20



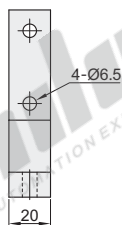
ABC01-G306-80B-50  
ABC02-G306-80B-50  
ABC03-G306-80B-50



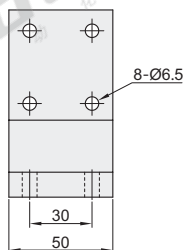
ABC01-G306-80B-80  
ABC02-G306-80B-80  
ABC03-G306-80B-80



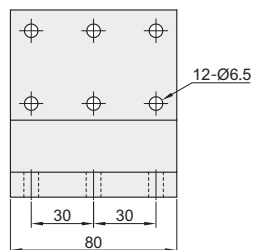
ABC01-G306-90-20  
ABC02-G306-90-20  
ABC03-G306-90-20



ABC01-G306-90-50  
ABC02-G306-90-50  
ABC03-G306-90-50



ABC01-G306-90-80  
ABC02-G306-90-80  
ABC03-G306-90-80



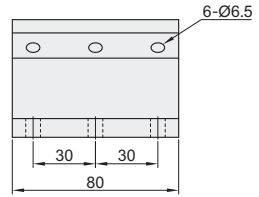
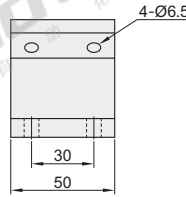
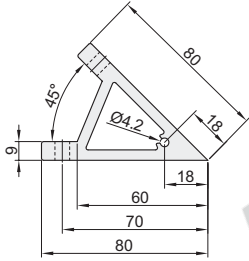
# 欧标30系列型材用配件-连接部分

## 挤压角座

ABC01-G306-80A-20  
ABC02-G306-80A-20  
ABC03-G306-80A-20

ABC01-G306-80A-50  
ABC02-G306-80A-50  
ABC03-G306-80A-50

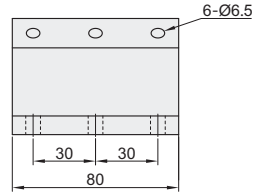
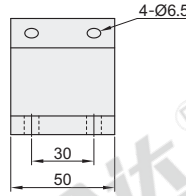
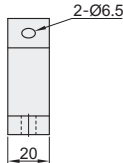
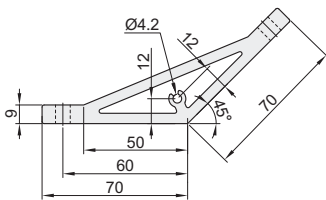
ABC01-G306-80A-80  
ABC02-G306-80A-80  
ABC03-G306-80A-80



ABC01-G306-70-20  
ABC02-G306-70-20  
ABC03-G306-70-20

ABC01-G306-70-50  
ABC02-G306-70-50  
ABC03-G306-70-50

ABC01-G306-70-80  
ABC02-G306-70-80  
ABC03-G306-70-80



视角标准：第一视角

代码			重量(g/pcs)	代码			重量(g/pcs)
ABC01-G306-30-20	ABC02-G306-30-20	ABC03-G306-30-20	13.4	ABC01-G306-60-20	ABC02-G306-60-20	ABC03-G306-60-20	48.3
ABC01-G306-30-50	ABC02-G306-30-50	ABC03-G306-30-50	34.2	ABC01-G306-60-50	ABC02-G306-60-50	ABC03-G306-60-50	123
ABC01-G306-30-80	ABC02-G306-30-80	ABC03-G306-30-80	54	ABC01-G306-60-80	ABC02-G306-60-80	ABC03-G306-60-80	196
ABC01-G306-30-25	ABC02-G306-30-25	ABC03-G306-30-25	17.7	ABC01-G306-80-20	ABC02-G306-80-20	ABC03-G306-80-20	76
ABC01-G306-30-55	ABC02-G306-30-55	ABC03-G306-30-55	39	ABC01-G306-80-50	ABC02-G306-80-50	ABC03-G306-80-50	188
ABC01-G306-30-85	ABC02-G306-30-85	ABC03-G306-30-85	60.4	ABC01-G306-80-80	ABC02-G306-80-80	ABC03-G306-80-80	301
ABC01-G306-45-20	ABC02-G306-45-20	ABC03-G306-45-20	26.8	ABC01-G306-80B-20	ABC02-G306-80B-20	ABC03-G306-80B-20	91
ABC01-G306-45-50	ABC02-G306-45-50	ABC03-G306-45-50	67	ABC01-G306-80B-50	ABC02-G306-80B-50	ABC03-G306-80B-50	288
ABC01-G306-45-80	ABC02-G306-45-80	ABC03-G306-45-80	107	ABC01-G306-80B-80	ABC02-G306-80B-80	ABC03-G306-80B-80	365
ABC01-G306-35-20	ABC02-G306-35-20	ABC03-G306-35-20	20.9	ABC01-G306-90-20	ABC02-G306-90-20	ABC03-G306-90-20	165
ABC01-G306-35-50	ABC02-G306-35-50	ABC03-G306-35-50	52	ABC01-G306-90-50	ABC02-G306-90-50	ABC03-G306-90-50	231
ABC01-G306-35-80	ABC02-G306-35-80	ABC03-G306-35-80	83	ABC01-G306-90-80	ABC02-G306-90-80	ABC03-G306-90-80	370
ABC01-G306-55-20	ABC02-G306-55-20	ABC03-G306-55-20	46	ABC01-G306-80A-20	ABC02-G306-80A-20	ABC03-G306-80A-20	58
ABC01-G306-55-50	ABC02-G306-55-50	ABC03-G306-55-50	114	ABC01-G306-80A-50	ABC02-G306-80A-50	ABC03-G306-80A-50	145
ABC01-G306-55-80	ABC02-G306-55-80	ABC03-G306-55-80	182	ABC01-G306-80A-80	ABC02-G306-80A-80	ABC03-G306-80A-80	232
ABC01-G306-50-20	ABC02-G306-50-20	ABC03-G306-50-20	40	ABC01-G306-70-20	ABC02-G306-70-20	ABC03-G306-70-20	66
ABC01-G306-50-50	ABC02-G306-50-50	ABC03-G306-50-50	101	ABC01-G306-70-50	ABC02-G306-70-50	ABC03-G306-70-50	170
ABC01-G306-50-80	ABC02-G306-50-80	ABC03-G306-50-80	161	ABC01-G306-70-80	ABC02-G306-70-80	ABC03-G306-70-80	264



请按图示订货

型号  
ABC01-G306-70-20  
ABC01-G306-70-50

☑ 可选加工

型号	可选加工代码
ABC01-G306-70-20	S
ABC01-G306-70-50	SET-OB

ABC01-G306-70-20-S

☑ 可选加工

型号	可选加工代码
ABC01-G306-70-20	S
ABC01-G306-70-50	SET-OB

ABC01-G306-70-20-S-SET-OB

① 备注: ABC01-G306-30-20 ABC01-G306-30-50  
ABC01-G306-30-80 ABC01-G306-30-25  
ABC01-G306-30-55 ABC01-G306-30-85  
ABC01-G306-45-20 ABC01-G306-45-50  
ABC01-G306-45-80  
ABC02-G306-30-20 ABC02-G306-30-50  
ABC02-G306-30-80 ABC02-G306-30-25  
ABC02-G306-30-55 ABC02-G306-30-85  
ABC02-G306-45-20 ABC02-G306-45-50  
ABC02-G306-45-80  
ABC03-G306-30-20 ABC03-G306-30-50  
ABC03-G306-30-80 ABC03-G306-30-25  
ABC03-G306-30-55 ABC03-G306-30-85  
ABC03-G306-45-20 ABC03-G306-45-50  
ABC03-G306-45-80  
不可追加螺纹孔加工。



可选加工

☑ 型号 ABC01-G306-55-50-S-SET-OB

增加加工项目	代码	技术说明
面板安装 螺纹孔加工	S	<p>在角座侧面上加工 安装面板用的螺纹 孔(单面M5.0螺纹 孔深度15mm) 螺纹孔位置</p>
配备合适的 螺栓,T型螺母, 垫片和弹垫	SET-OB	<p>指定SET时, 配备将角座固定在 型材上的螺栓, 螺母和垫片。(例) 螺栓: AID31-M6-L16 T型螺母: AHC21-308-M6 垫片: AIK31-6 弹垫: AIH21-6</p>

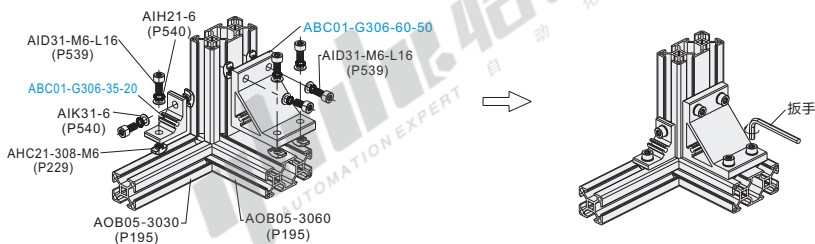
① 备注: 根据不同的角座厚度配备不同规格的螺栓。

① 备注: ABC03-G306不适用SET-OB可选加工。

EX  
Example  
使用示例

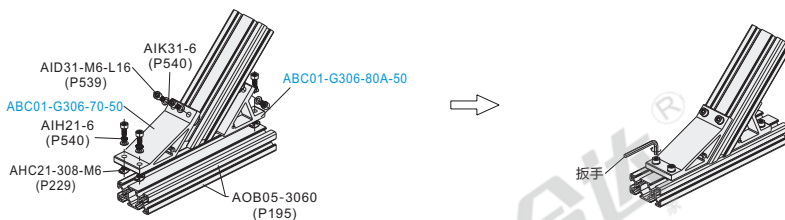
分解图

组装图



分解图

组装图



分解图

组装图

