

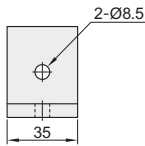
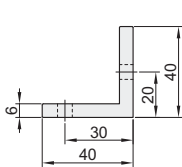
挤压角座

代码	类型	材质	表面处理
ABC01-4010			喷砂氧化
ABC02-4010	挤压角座	A6063-T5	喷砂氧化(断面、打孔处无氧化)
ABC03-4010			黑色阳极氧化

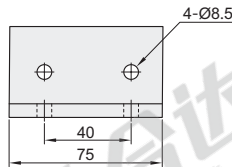


- ① 用于型材固定角度的外连接, 可固定封板。
- ② 根据设计需求, 孔距、长度可来图加工。
- ③ ABC02系列产品表面有轻微划伤属于正常现象。

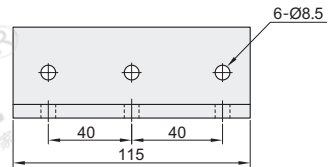
ABC01-4010-40-35  
ABC02-4010-40-35  
ABC03-4010-40-35



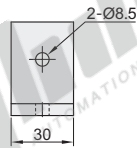
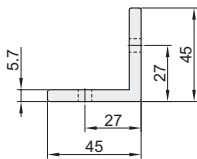
ABC01-4010-40-75  
ABC02-4010-40-75  
ABC03-4010-40-75



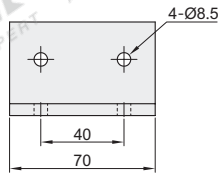
ABC01-4010-40-115  
ABC02-4010-40-115  
ABC03-4010-40-115



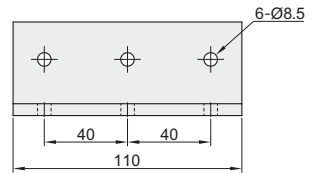
ABC01-4010-45-30  
ABC02-4010-45-30  
ABC03-4010-45-30



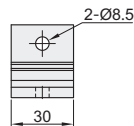
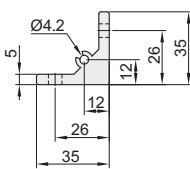
ABC01-4010-45-70  
ABC02-4010-45-70  
ABC03-4010-45-70



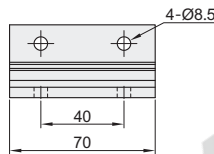
ABC01-4010-45-110  
ABC02-4010-45-110  
ABC03-4010-45-110



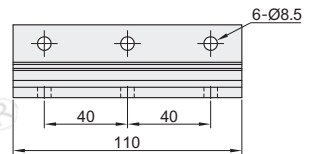
ABC01-4010-35-30  
ABC02-4010-35-30  
ABC03-4010-35-30



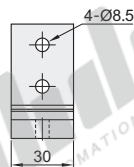
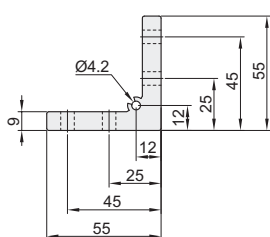
ABC01-4010-35-70  
ABC02-4010-35-70  
ABC03-4010-35-70



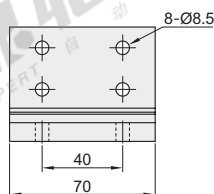
ABC01-4010-35-110  
ABC02-4010-35-110  
ABC03-4010-35-110



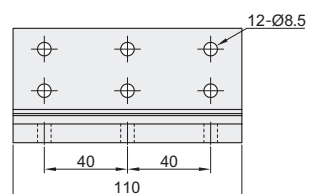
ABC01-4010-55-30  
ABC02-4010-55-30  
ABC03-4010-55-30



ABC01-4010-55-70  
ABC02-4010-55-70  
ABC03-4010-55-70



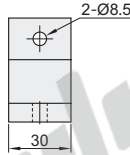
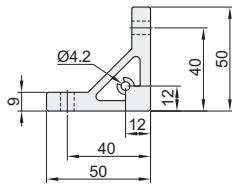
ABC01-4010-55-110  
ABC02-4010-55-110  
ABC03-4010-55-110



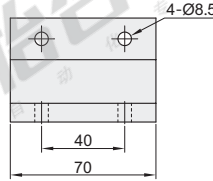
# 欧标40槽宽10.2系列型材用配件-连接部分

## 挤压角座

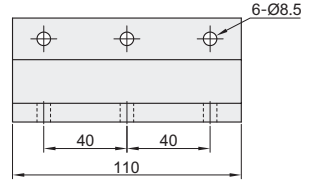
ABC01-4010-50-30  
ABC02-4010-50-30  
ABC03-4010-50-30



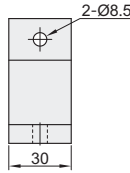
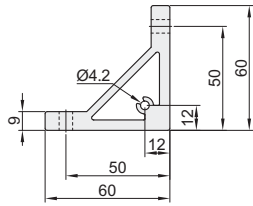
ABC01-4010-50-70  
ABC02-4010-50-70  
ABC03-4010-50-70



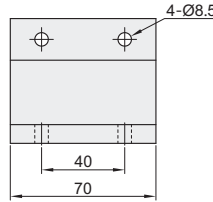
ABC01-4010-50-110  
ABC02-4010-50-110  
ABC03-4010-50-110



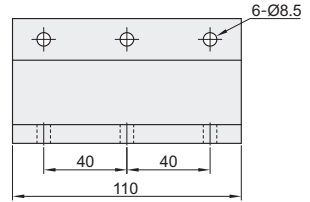
ABC01-4010-60-30  
ABC02-4010-60-30  
ABC03-4010-60-30



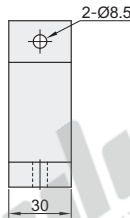
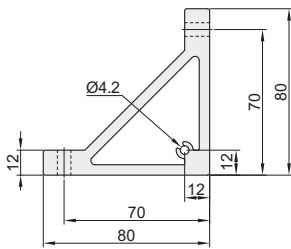
ABC01-4010-60-70  
ABC02-4010-60-70  
ABC03-4010-60-70



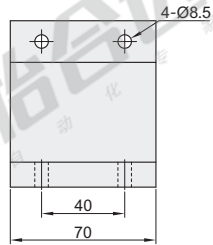
ABC01-4010-60-110  
ABC02-4010-60-110  
ABC03-4010-60-110



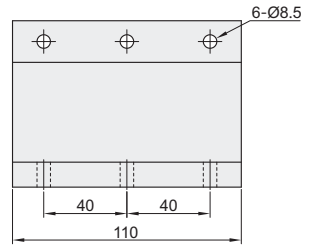
ABC01-4010-80-30  
ABC02-4010-80-30  
ABC03-4010-80-30



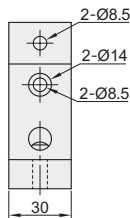
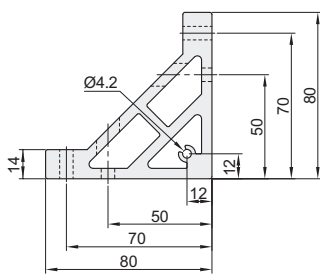
ABC01-4010-80-70  
ABC02-4010-80-70  
ABC03-4010-80-70



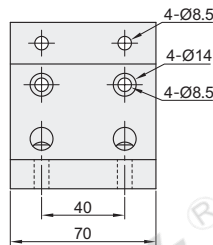
ABC01-4010-80-110  
ABC02-4010-80-110  
ABC03-4010-80-110



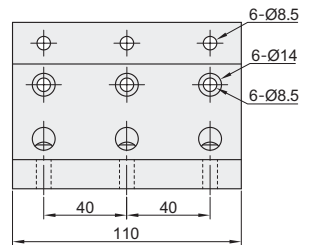
ABC01-4010-80B-30  
ABC02-4010-80B-30  
ABC03-4010-80B-30



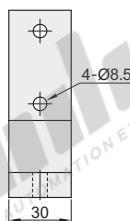
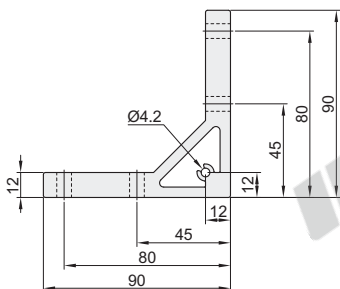
ABC01-4010-80B-70  
ABC02-4010-80B-70  
ABC03-4010-80B-70



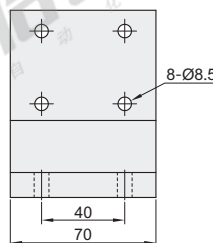
ABC01-4010-80B-110  
ABC02-4010-80B-110  
ABC03-4010-80B-110



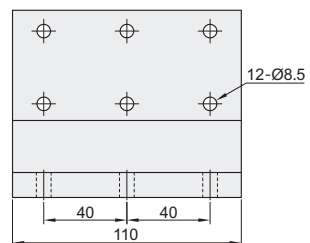
ABC01-4010-90-30  
ABC02-4010-90-30  
ABC03-4010-90-30

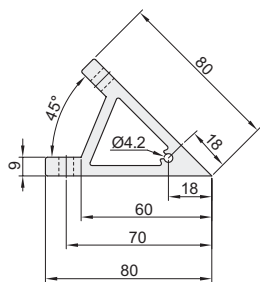


ABC01-4010-90-70  
ABC02-4010-90-70  
ABC03-4010-90-70



ABC01-4010-90-110  
ABC02-4010-90-110  
ABC03-4010-90-110

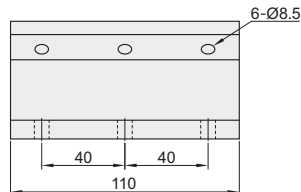
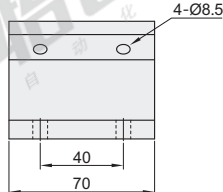
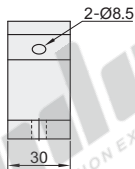




ABC01-4010-80A-30  
ABC02-4010-80A-30  
ABC03-4010-80A-30

ABC01-4010-80A-70  
ABC02-4010-80A-70  
ABC03-4010-80A-70

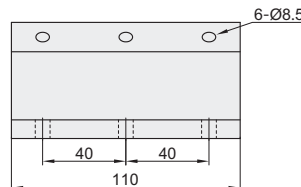
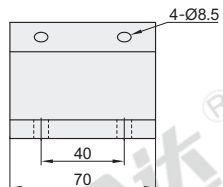
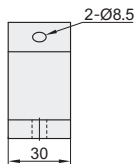
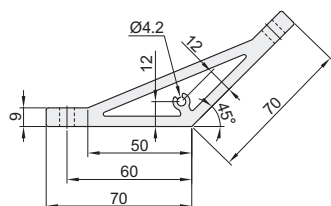
ABC01-4010-80A-110  
ABC02-4010-80A-110  
ABC03-4010-80A-110



ABC01-4010-70-30  
ABC02-4010-70-30  
ABC03-4010-70-30

ABC01-4010-70-70  
ABC02-4010-70-70  
ABC03-4010-70-70

ABC01-4010-70-110  
ABC02-4010-70-110  
ABC03-4010-70-110



视角标准：第一视角

代码			重量(g/pcs)	代码			重量(g/pcs)
ABC01-4010-40-35	ABC02-4010-40-35	ABC03-4010-40-35	40	ABC01-4010-80-30	ABC02-4010-80-30	ABC03-4010-80-30	113
ABC01-4010-40-75	ABC02-4010-40-75	ABC03-4010-40-75	86.2	ABC01-4010-80-70	ABC02-4010-80-70	ABC03-4010-80-70	264
ABC01-4010-40-115	ABC02-4010-40-115	ABC03-4010-40-115	132.3	ABC01-4010-80-110	ABC02-4010-80-110	ABC03-4010-80-110	415
ABC01-4010-45-30	ABC02-4010-45-30	ABC03-4010-45-30	25.2	ABC01-4010-80B-30	ABC02-4010-80B-30	ABC03-4010-80B-30	137
ABC01-4010-45-70	ABC02-4010-45-70	ABC03-4010-45-70	58	ABC01-4010-80B-70	ABC02-4010-80B-70	ABC03-4010-80B-70	320
ABC01-4010-45-110	ABC02-4010-45-110	ABC03-4010-45-110	92	ABC01-4010-80B-110	ABC02-4010-80B-110	ABC03-4010-80B-110	503
ABC01-4010-35-30	ABC02-4010-35-30	ABC03-4010-35-30	30.9	ABC01-4010-90-30	ABC02-4010-90-30	ABC03-4010-90-30	140
ABC01-4010-35-70	ABC02-4010-35-70	ABC03-4010-35-70	72	ABC01-4010-90-70	ABC02-4010-90-70	ABC03-4010-90-70	323
ABC01-4010-35-110	ABC02-4010-35-110	ABC03-4010-35-110	113	ABC01-4010-90-110	ABC02-4010-90-110	ABC03-4010-90-110	510
ABC01-4010-55-30	ABC02-4010-55-30	ABC03-4010-55-30	68	ABC01-4010-80A-30	ABC02-4010-80A-30	ABC03-4010-80A-30	87
ABC01-4010-55-70	ABC02-4010-55-70	ABC03-4010-55-70	160	ABC01-4010-80A-70	ABC02-4010-80A-70	ABC03-4010-80A-70	203
ABC01-4010-55-110	ABC02-4010-55-110	ABC03-4010-55-110	250	ABC01-4010-80A-110	ABC02-4010-80A-110	ABC03-4010-80A-110	319
ABC01-4010-50-30	ABC02-4010-50-30	ABC03-4010-50-30	60	ABC01-4010-70-30	ABC02-4010-70-30	ABC03-4010-70-30	100
ABC01-4010-50-70	ABC02-4010-50-70	ABC03-4010-50-70	141	ABC01-4010-70-70	ABC02-4010-70-70	ABC03-4010-70-70	235
ABC01-4010-50-110	ABC02-4010-50-110	ABC03-4010-50-110	222	ABC01-4010-70-110	ABC02-4010-70-110	ABC03-4010-70-110	369
ABC01-4010-60-30	ABC02-4010-60-30	ABC03-4010-60-30	73				
ABC01-4010-60-70	ABC02-4010-60-70	ABC03-4010-60-70	169				
ABC01-4010-60-110	ABC02-4010-60-110	ABC03-4010-60-110	266				



请按图示订货

型号

ABC01-4010-45-30  
ABC01-4010-45-70  
ABC01-4010-45-110

可選加工

型号	可選加工代码
ABC01-4010-70-30	
ABC01-4010-70-70	SET-OB
ABC01-4010-70-110	

ABC01-4010-70-30 — S

备注：ABC01-4010-45-30 ABC01-4010-40-35  
ABC01-4010-45-70 ABC01-4010-40-75  
ABC01-4010-45-110 ABC01-4010-40-115  
ABC02-4010-45-30 ABC02-4010-40-35  
ABC02-4010-45-70 ABC02-4010-40-75  
ABC02-4010-45-110 ABC02-4010-40-115  
ABC03-4010-45-30 ABC03-4010-40-35  
ABC03-4010-45-70 ABC03-4010-40-75  
ABC03-4010-45-110 ABC03-4010-40-115  
不可提供断面螺纹孔加工。



可選加工

可選加工

型号	可選加工代码
ABC01-4010-70-30	
ABC01-4010-70-70	SET-OB
ABC01-4010-70-110	

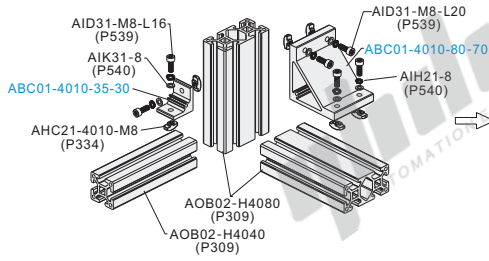
ABC01-4010-70-30 — S — SET-OB

增加加工项目	代码	技术说明
面板安装 螺纹孔加工	S	<p>在角座侧面上加工安装面板用的螺纹孔(单面M5螺纹孔深度15mm)</p> <p>螺纹孔位置</p>
配备合适的 螺栓、T型 螺母、垫片 和弹垫	SET-OB	<p>指定SET时，配备将角座固定在型材上的螺栓、螺母和垫片。(例) 螺栓：AID31-M8-L16 T型螺母：AHC21-4010-M8 垫片：AIK31-8 弹垫：AIH21-8</p>

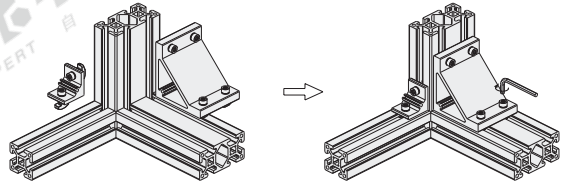
备注：根据不同的角座厚度配备不同规格的螺栓。  
备注：ABC03-4010不适用SET-OB可選加工。

EX  
Example  
使用示例

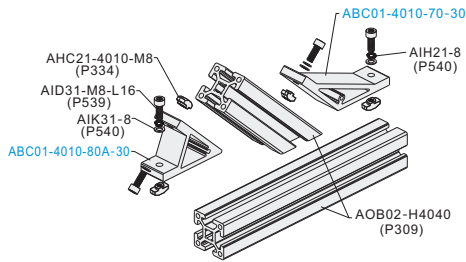
分解图



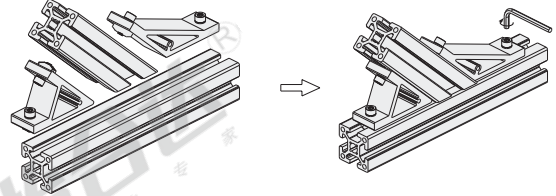
组装图



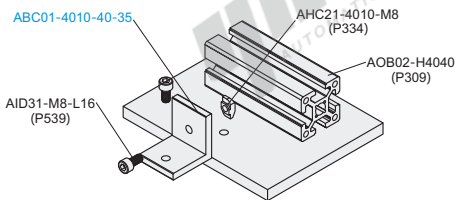
分解图



组装图



分解图



组装图

