

型材通用配件-门框部分 ◀ 门配件

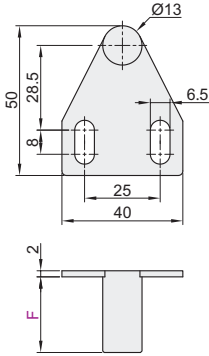
门阻

代码	类型	材质	表面处理
AKC22	门阻	碳钢	镀锌

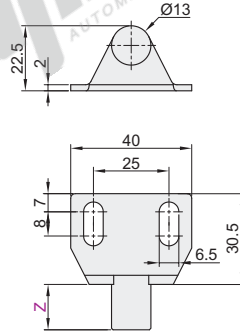
① 用于门窗闭合定位。



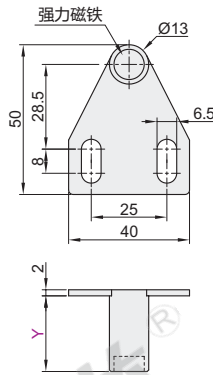
AKC22-1530-F15
AKC22-1540-F25
配强力磁铁1个



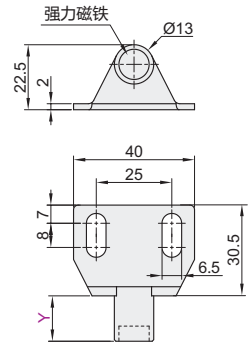
AKC22-1530-Z15
AKC22-1540-Z25
配强力磁铁1个



AKC22-1530-YF15
AKC22-1540-YF25

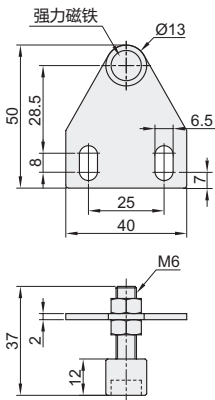


AKC22-1530-YZ15
AKC22-1540-YZ25

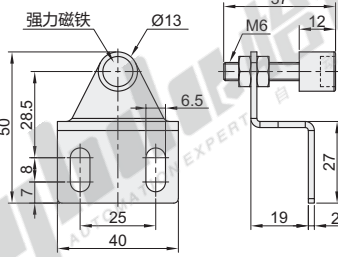


型材通用配件系列

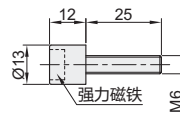
AKC22-T



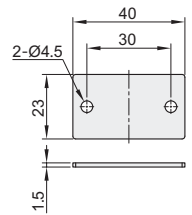
AKC22-T-ZA



AKC22-T-LZ



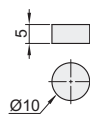
AKC22-TIEPIAN
铁质吸附片



AKC22-1530/1540-01

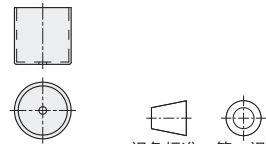
强力磁铁

① 吸力:10N



AKC22-JIAOTAO

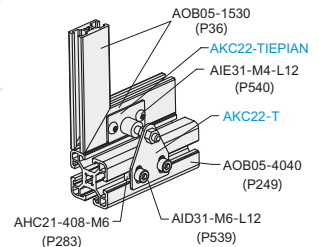
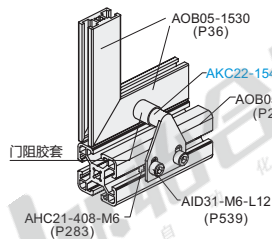
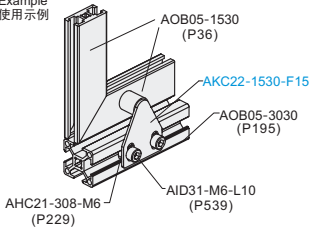
门阻胶套



视角标准: 第一视角

EX

Example
使用示例



代码	重量(g/pcs)
AKC22-1530-F15	36.3
AKC22-1540-F25	46.4
AKC22-1530-Z15	36.1
AKC22-1540-Z25	46.6

代码	重量(g/pcs)
AKC22-1530-YF15	36.3
AKC22-1540-YF25	46.4
AKC22-1530-YZ15	36.1
AKC22-1540-YZ25	46.6

代码	重量(g/pcs)
AKC22-T	30.6
AKC22-T-ZA	54
AKC22-T-LZ	15.5
AKC22-TIEPIAN	10.2



请按图示订货

型号

AKC22-1530-F15
AKC22-1530-YF15
AKC22-T

① 选用门阻时, 两配合型材尺寸相减, 其值等于F时方可适用。

例: 30型材-15型材=15F。

① 所有门阻不配胶套, 需单独采购。

① 所有门阻不配铁质吸附片, 需单独采购。